

4301224 2000

U.S. PUBLIC LAND SURVEY MONUMENT RECORD

(Prepared and as required by S. A-E 7.08 WI Administrative Code)

The E 1/4 corner of Section 24, T. 30 N., R. 12 E., Langlade County, WI

Corner was: (check all that apply)

- Restored through acceptance of an obliterated evidence location.
- Restored through acceptance of a found perpetuated location.
- Determined to be lost and re-established through proportionate methods.
(Show bearings and distances to PLSS corners used for proportionating.)
- Restored/recovered/reestablished in a location that differs from a previously established position. (Show difference in plan view below.)
- Check here if additional information is shown on the reverse side of this form.

Describe record evidence, recovered physical evidence, occupational evidence and all other evidence considered in the recovery/restoration of the corner.

FOUND 2in. IRON POST WITH BRASS CAP, DESCRIBED IN THE NOTES FROM THE 1933 DEPENDENT RESURVEY OF THE EAST BOUNDARY OF T30N R12E OF THE 4TH PRINCIPAL MERIDIAN.

ACCEPTED AS THE TRUE CORNER AND SET TIES AS SHOWN.

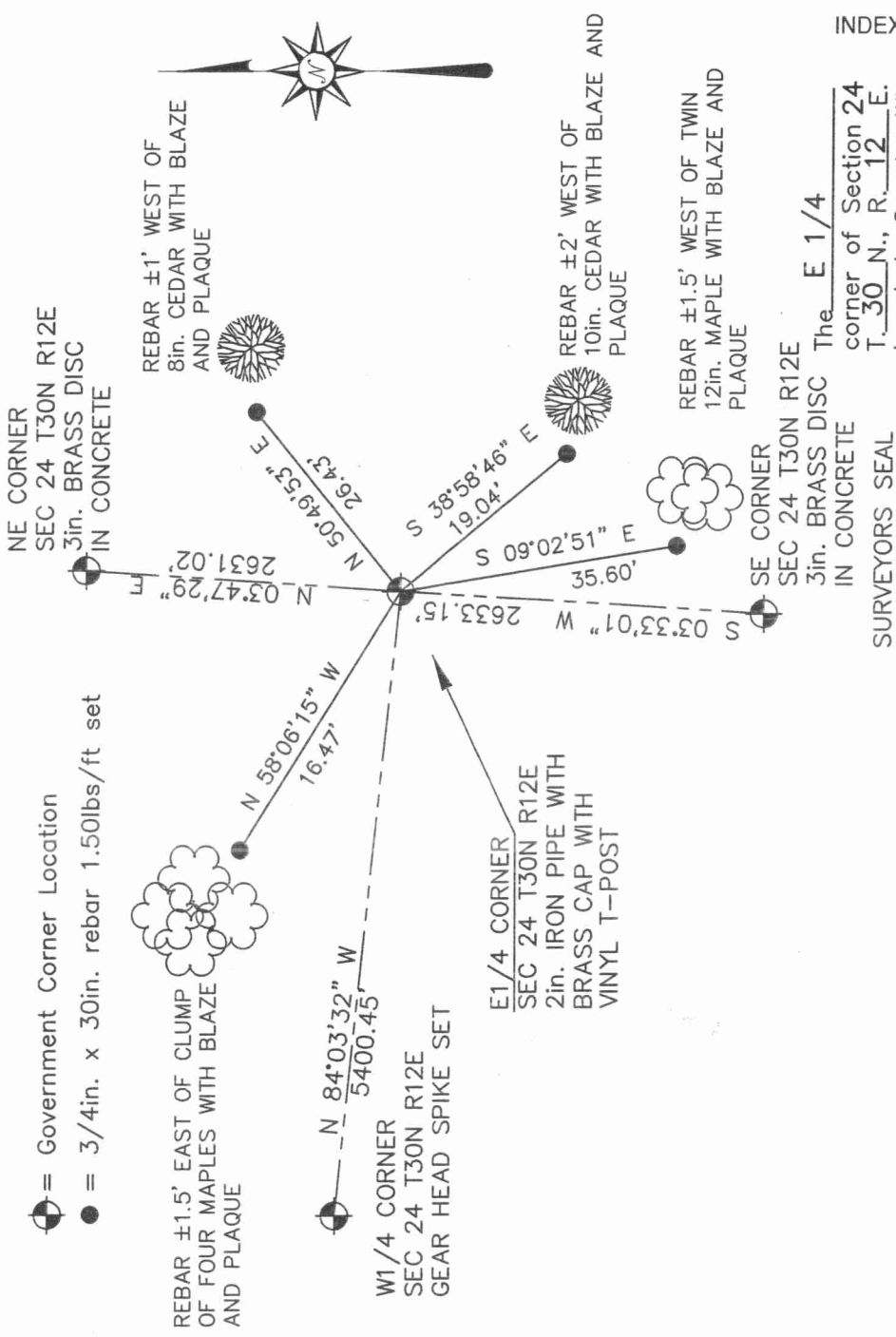
PLACED 6ft. VINYL T-POST NEXT TO IRON POST



Physical description of the monument found:

2in. IRON POST WITH BRASS CAP,

Describe the accessories used to perpetuate the location of the corner. Include a plan view drawing and indicate accessories found/set. Describe measuring point on bearing trees. Show any topographic features that would aid in future recovery of the corner.

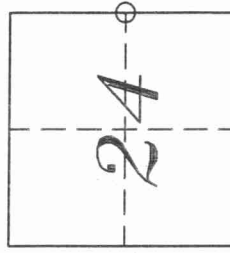


I, Darren B. Krzanowski, certify that the corner location shown on this record was determined by me or under my direction and control and that this U.S. Public Land Survey Monument Record is correct and complete to the best of my knowledge and belief.

Darren B. Krzanowski 21 Feb 2000
Signature _____ Date _____



INDEX No. P25
The E 1/4 corner of Section 24 T. 30 N., R. 12 E. Langlade County, WI



○ = Location of corner