

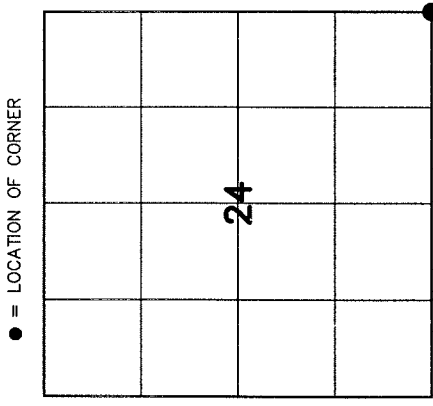
4301224 0000 2017

# U.S. PUBLIC LAND SURVEY MONUMENT RECORD

HISTORY OF ORIGINAL CORNER ESTABLISHMENT AND SUBSEQUENT RESTORATION AND DESCRIPTION OF ANY RECORD, MONUMENT OCCUPATIONAL, TESTIMONIAL OR OTHER EVIDENCE CONSIDERED:

THE ORIGINAL CORNER WAS SET BY WJ NEELY IN 1853. THE ORIGINAL BEARING TREES WERE:  
 MAPLE 12" S63°W9 LINKS  
 HEMLOCK 16" N 54°W 23 LINKS  
 BIRCH 10" N 22°E 33 LINKS  
 MAPLE 10" S64°E 14 LINKS

1933- GLO FOUND SOME ORIGINAL EVIDENCE AND SET THE BRASS CAP IN CONCRETE  
 1981 - KELLY FOUND THE BRASS CAP AND SET TIES  
 2017-1 ALSO FOUND THE BRASS CAP AND SET TIES AS SHOWN. SET A MAGNET ON THE SOUTH EDGE OF THE CONCRETE 3" DEEP

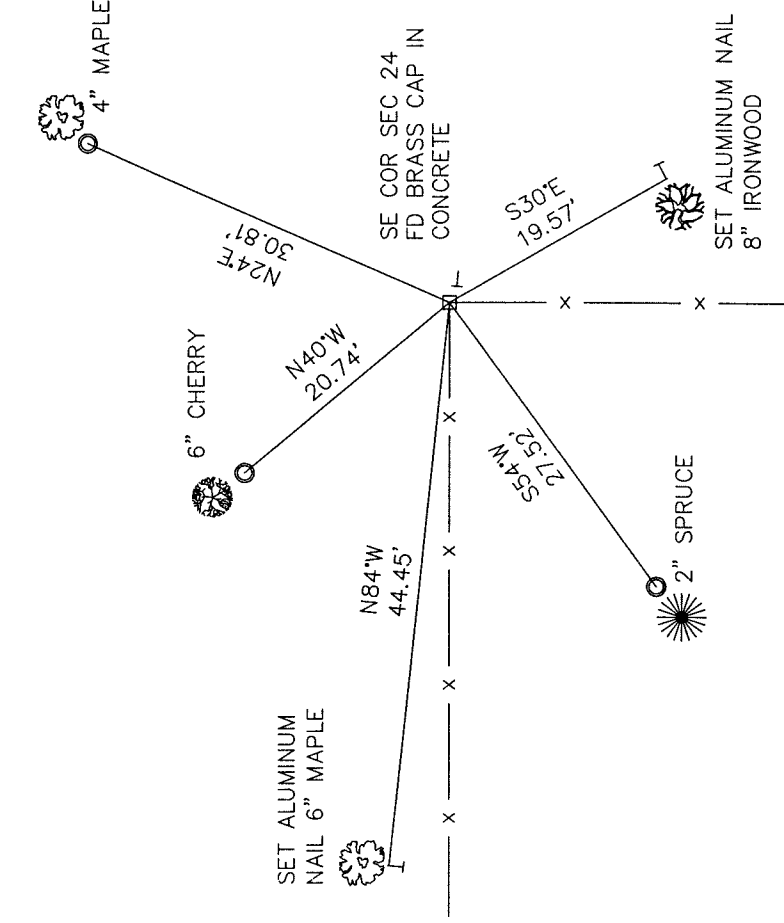


SECTION 24  
 TOWNSHIP 30 NORTH, RANGE 12 EAST  
 TOWN OF NORWOOD  
LANGLADE COUNTY, WISCONSIN

CORNER WAS: (CHECK ALL THAT APPLY)

- RESTORED THROUGH ACCEPTANCE OF AN OBLITERATED EVIDENCE LOCATION
- RESTORED THROUGH ACCEPTANCE OF A FOUND PERPETUATED LOCATION
- CONSIDERED A LOST CORNER AND REESTABLISHED THROUGH LOST CORNER PROPORTIONATE METHODS (INCLUDE A PLAN VIEW DRAWING SHOWING DISTANCES AND DIRECTIONS TO OTHER PUBLIC LAND SURVEY CORNERS USED FOR PROPORTIONING AND DETERMINING THE CORNER LOCATION)
- RESTORED OR REESTABLISHED IN A LOCATION THAT DIFFERS FROM A PREVIOUS RESTORATION OR REESTABLISHMENT (INCLUDE A PLAN VIEW DRAWING AND INDICATE WHAT WAS SET AND/OR FOUND)
- CHECK IF THERE IS ADDITIONAL INFORMATION ON BACK

DESCRIBE THE MONUMENT AND ACCESSORIES USED TO PERPETUATE THE LOCATION OF THE CORNER. (INCLUDE A PLAN VIEW DRAWING AND INDICATE WHAT WAS SET AND/OR FOUND) ALSO INCLUDE FOUR TIES TO THE SECTION CORNER AND DESCRIPTION OF THE TIES.

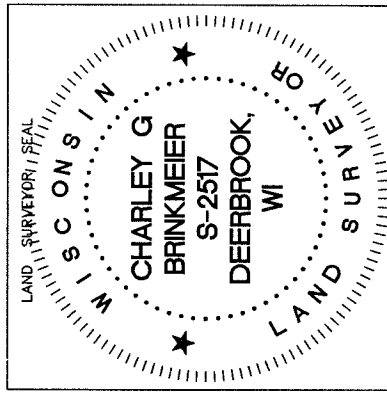


- SET 3/4" x 30" RE-BAR AT TIE LOCATIONS
- T- 6 FOOT WHITE VINYL POST SET
- BEARING REFERENCED TO MAGNETIC
- COORDINATE DATUM NAD 83(2011)
- N 310208.6130
- E 664278.5590

CHARLEY G. BRINKMEIER

(Type or print name) CERTIFY THAT THE CORNER LOCATION SHOWN ON THIS RECORD WAS DETERMINED BY ME OR UNDER MY DIRECTION AND CONTROL, AND THAT THIS U.S. PUBLIC LAND SURVEY MONUMENT RECORD IS CORRECT AND COMPLETE TO THE BEST OF MY KNOWLEDGE AND BELIEF.

*Charley G. Brinkmeier*  
 SIGNATURE  
 10-24-17  
 DATE



R25 30-12  
 INDEX NO.