

CERTIFIED LAND CORNER RESTORATION

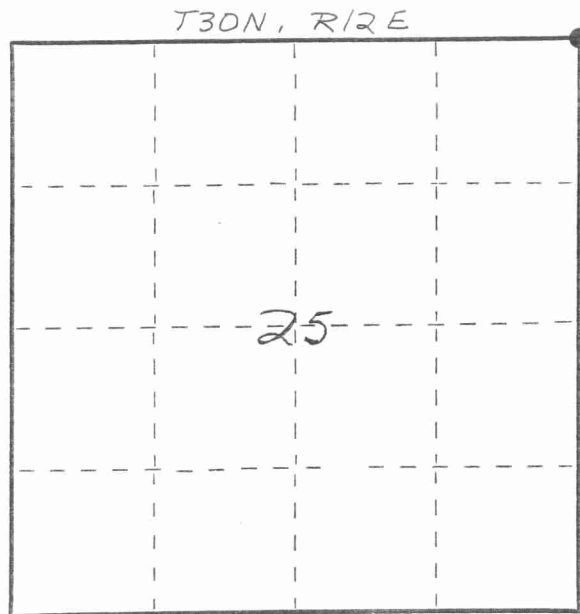
Index No. R-25

State of Wisconsin }
County of LANGLADE } ss.

I, WILLIAM F. KELLY, do hereby certify that on the 6th day of Nov., 1981, I found evidence of the NE corner of SECT. 25 Township 30, North, Range 12 EAST, Fourth Principal Meridian, as described hereon; and that from this evidence I established a new monument and accessories as described hereon to perpetuate the original location of this corner.

Resident witnesses:

.....
.....
.....



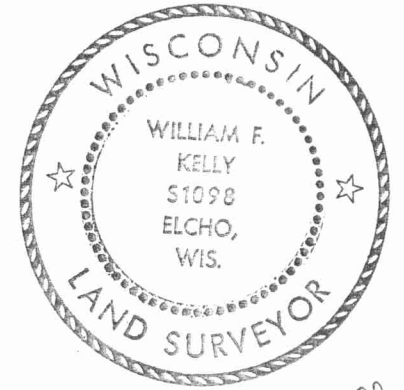
○ = Corner monument restored.

History of original corner establishment:
ORIGINAL CORNER ESTABLISHED BY
WILLIAM J. AERLY IN MAY, 1853

Description of corner evidence found:

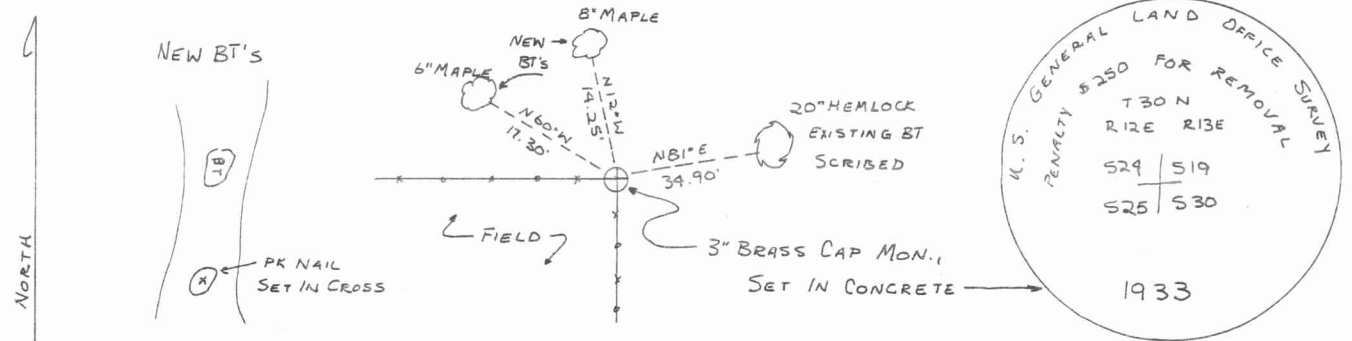
A 3" BRASS CAP MONUMENT SET
IN CONCRETE, FOUND IN PLACE.

ESTABLISHED NEW BEARING TREES
AND RECOVERED OLD BEARING TREE



William F. Kelly

Description of monument and accessories I established to perpetuate the original location of this corner.



Dated at ELCHO, Wis., this 6th day of Nov., 1981

Signature William F. Kelly Title COUNTY SURVEYOR Registration No. 1098
(County Surveyor, Registered Land Surveyor, or other duly authorized official)

Office of Register of Deeds, County of....., I hereby certify that the within instrument was filed in this office for record on the..... day of....., 19..... at..... o'clock..... M.

.....
(Register of Deeds)

By..... Deputy

4 30 12-24 00 00

FORM 985 H. C. MILLER CO., MILWAUKEE