

4301223 2000

U.S. PUBLIC LAND SURVEY MONUMENT RECORD

(Prepared and as required by S. A-E 7.08 WI Administrative Code)

The W 1/4 corner of Section 24, T. 30 N., R. 12 E., Langlade County, WI

Corner was: (check all that apply)

- Restored through acceptance of an obliterated evidence location.
- Restored through acceptance of a found prepatented location.
- Determined to be lost and re-established through proportionate methods.
(Show bearings and distances to PLSS corners used for proportioning.)
- Restored/recovered/reestablished in a location that differs from a previously established position. (Show difference in plan view below.)
- Check here if additional information is shown on the reverse side of this form.

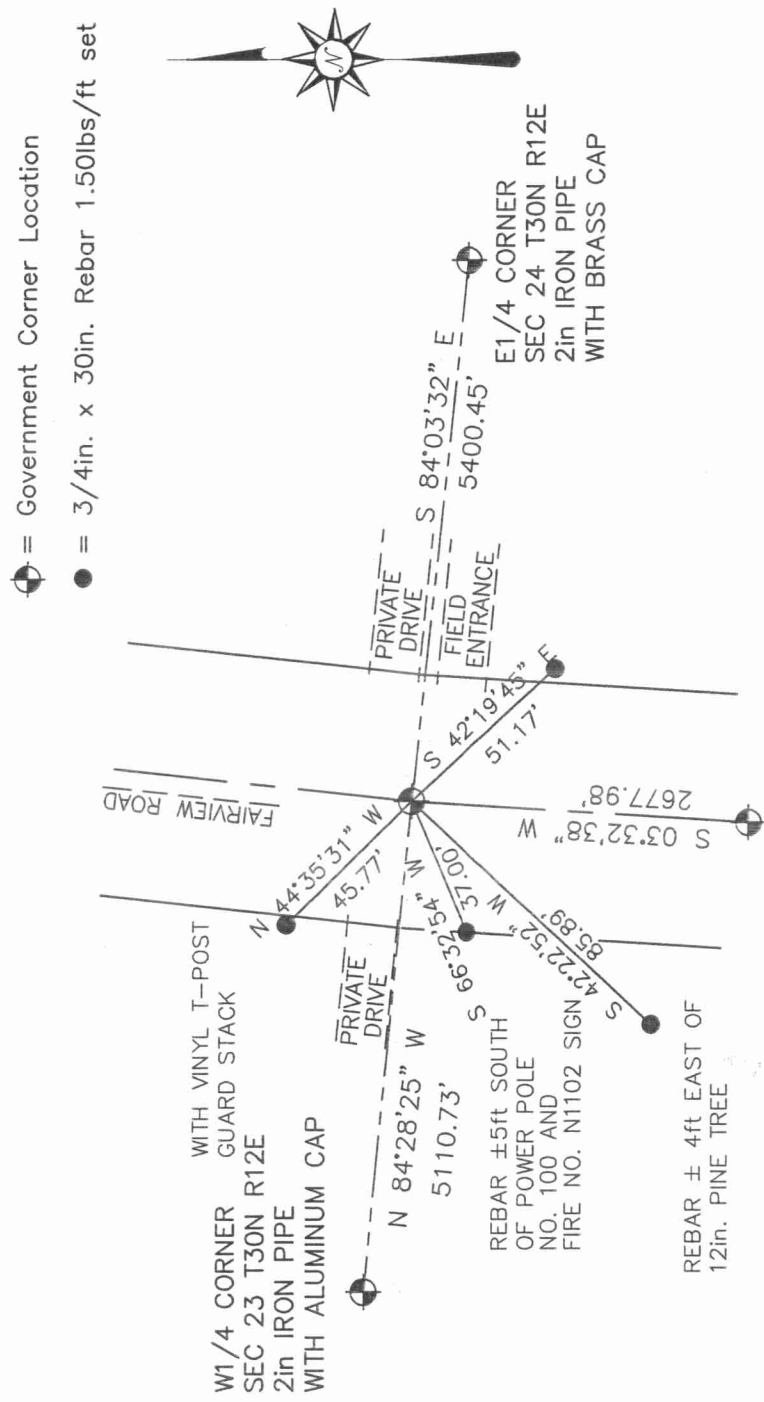
Describe record evidence, recovered physical evidence, occupational evidence and all other evidence considered in the recovery/restoration of the corner.

NO EVIDENCE OF ORIGINAL CORNER FOUND
 REESTABLISHED CORNER LOCATION FROM TRAVERSE OF SECTIONS
 23 AND 24 T30N R12E, USING EAST-WEST FENCE LINES AS
 BEING A SECTION LINE BY LONG-ACCEPTED REPUTATION AND
 TESTIMONY, COMMON USAGE AND LOCAL ACCEPTANCE.

Physical description of the monument set:

SET GEAR HEAD SPIKE IN BITUMINOUS

Describe the accessories used to perpetuate the location of the corner. Include a plan view drawing and indicate accessories found/set. Describe measuring point on bearing trees. Show any topographic features that would aid in future recovery of the corner.



SW CORNER
 SEC 24 T30N R12E
 MAG SPIKE

SURVEYORS SEAL

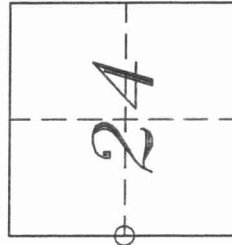
I, Darren B. Krzanowski, certify that the corner location shown on this record was determined by me or under my direction and control and that this U.S. Public Land Survey Monument Record is correct and complete to the best of my knowledge and belief.

Darren B. Krzanowski Date 21 Feb 2000

Signature

INDEX No. P21

The W 1/4
 corner of Section 24
 T. 30 N., R. 12 E.
 Langlade County, WI



○ = Location of corner

