

43012 21 0020 2014

LANGLADE COUNTY U.S. PUBLIC LAND CORNER RESTORATION

The South 1/4 Corner of Section 21, T. 30 N., R. 12 E., Langlade County, WI.

Corner was: (check all that apply)

- Restored through acceptance of an obliterated evidence location.
- Restored through acceptance of a found perpetuated location.
- Determined to be lost and re-established through proportionate methods.
Show bearings and distances to PLSS corners used for proportioning, and show original distances
- Restored/recovered/re-established in a location that differs from a previously established position.
(Show difference in plan view below)
- Check here if additional information is shown on the reverse side of this form.

Describe record evidence, recovered physical evidence, occupational evidence, testimonial evidence and all other evidence considered in the recovery/restoration of the corner.

- 1854 ORIGINAL CORNER ESTABLISHED BY JAMES WITHROW.
- 1907 BROOKS STONE IN ROAD.
- 1990 W. KELLY PK OVER IRON.
- 2012 D. TLUSTY MAG NAIL FOUND.

I USED EXISTING CORNERS FROM THE 2012 D. TLUSTY SURVEY TO CALCULATE AND RE-ESTABLISH THE LOCATION OF THIS CORNER.

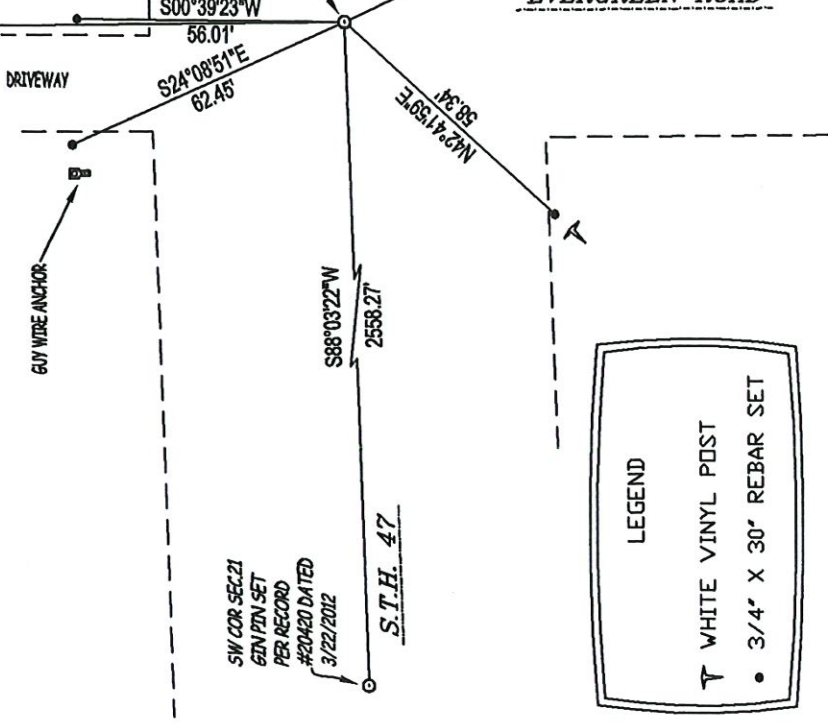
Physical description of the monument set:

- I SET A GIN PIN AT THE SURFACE OF THE BLACK TOP 0.80 FEET NORTH OF THE CENTERLINE.

Describe the accessories used to perpetuate the corner. Include a plan view drawing and accessories found/set. Describe measuring point on bearing trees. Show any topographic features that would aid in future recovery of the corner.



GENE J. WADZINSKI RLS NO. 2400
SURVEY COMPLETED 05/13/14



SW COR SEC 21
GIN PIN SET
PER RECORD
#20420 DATED
3/22/2012

S.T.H. 47

S 1/4 COR. SEC 21
GIN PIN SET 0.8'
NORTH OF CENTER
LINE PER RECORD
#20420 DATED
3/22/2012

OLD TIE TO POWER POLE

N25°32'08\"/>

EVERGREEN ROAD

LEGEND

- T WHITE VINYL POST
- 3/4" X 30" REBAR SET

Index No. R11



LOCATION
⊙ = corner perpetuated
THE SOUTH 1/4 CORNER
SECTION 21, T. 30 N., R. 12 E.,
LANGLADE COUNTY, WI

43012210000

U. S. PUBLIC LAND SURVEY MONUMENT RECORD

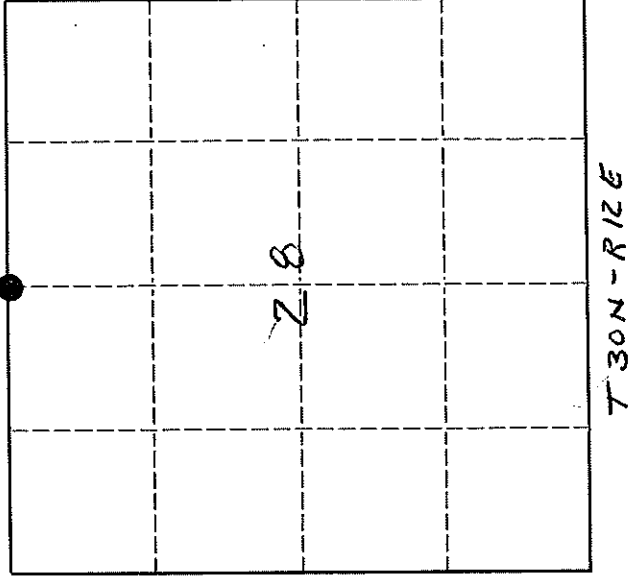
INSTRUCTIONS:

This record shall show the location of the corner and shall include all of the following nine elements (a through i).

- (a) Identify the corner by reference to the U.S. public land survey system.
- O = Corner monument restored.

ORIG. COR. ESTABLISHED BY JAMES WIT#ROW, DEC. 1854

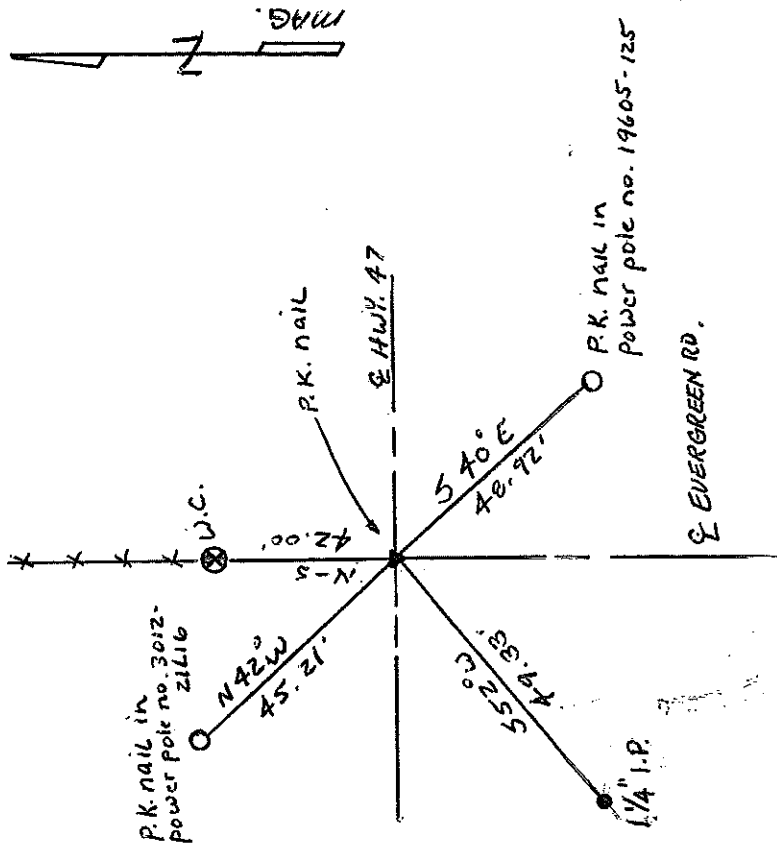
BROOKS, 1907, STONE IN ROAD



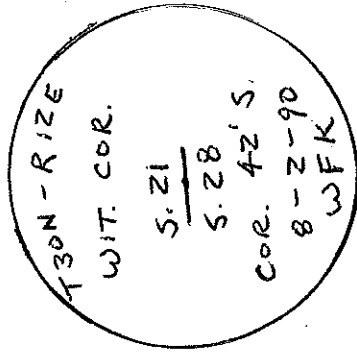
- (b) Describe any record evidence, monument evidence, occupational evidence, testimonial evidence or any other material evidence you considered, and whether the monument was found or placed.

FOUND P.K. NAIL OVER IRON AT INTERSECTION OF EVERGREEN RD. & HWY 47. SET 3" AL. WITNESS MONUMENT NORTH.

- (c) In the plan view drawing below, provide reference ties to at least 4 witness monuments, or, if the location is within a municipality, to at least 2 witness monuments. (Witness monuments shall be made of concrete, natural stone, iron or other equally durable material.) Describe witness monuments.



- (d) Show a plan view drawing depicting the relevant monuments and reference ties which is sufficient in detail to enable accurate relocation of the corner monument if the corner monument is disturbed. Indicate north.



4301221000

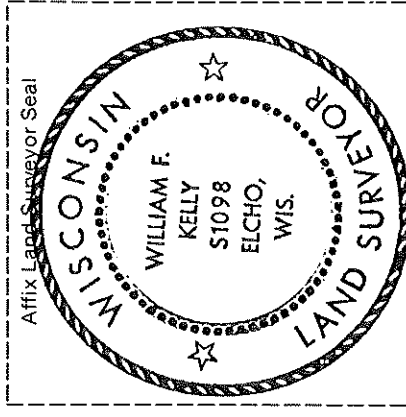
Describe any material discrepancy between the location of the corner as restored or reestablished and the location of that corner as previously restored or reestablished by distance and direction. Show the discrepancy on the plan view drawing under (d), above. Show the distances between the corner as previously restored or reestablished and (1) the corner as restored or reestablished, and (2) to at least 2 of the witness monuments shown on the drawing in (d), above.

NONE

(f) Was the corner restored through acceptance of (1) an obliterated evidence location, or, (2) a found perpetuated location.?

FOUND PERPETUATED LOCATION

(g & h) Was the corner reestablished through lost corner proportionate methods? If so, show the method, including the directions and distances to other public land survey corners used as evidence or used for proportioning in determining the corner location. NO



(i) I, WILLIAM F. KELLY
(type or print name)

certify that the corner location shown on this record was determined by me or under my direction and control and that this U.S. Public Land Survey Monument Record is correct and complete to the best of my knowledge and belief.

William F. Kelly 8/21/90
Signature Date