

# LANGLADE COUNTY U.S. PUBLIC LAND CORNER RESTORATION

The South Quarter corner of Section 20, T. 30 N., R. 12 E., Langlade County, WI.

**Corner was: (check all that apply)**

- Restored through acceptance of an obliterated evidence location.
- Restored through acceptance of a found perpetuated location.
- Determined to be lost and re-established through proportionate methods.
- Show bearings and distances to PLSS corners used for proportioning, and show original distances).
- Restored/recovered/re-established in a location that differs from a previously established position.
- (Show difference in plan view below).
- Check here if additional information is shown on the reverse side of this form.

3012190000

4/30/2000

**Describe record evidence, recovered physical evidence, occupational evidence, testimonial evidence and all other evidence considered in the recovery/restoration of the corner.**

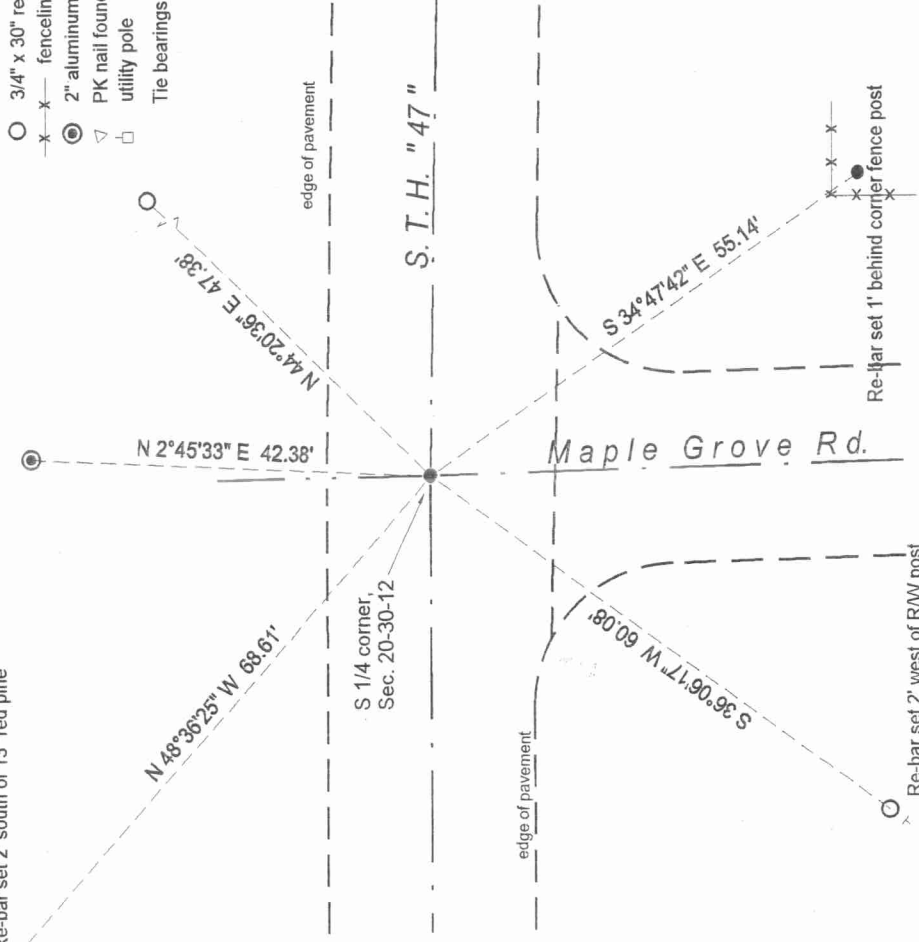
The original corner was established in 1854 by James Withrow. One original bearing tree: sugar, 8", N 07° E, 37 links. In 1920, E.S. Brooks called this corner a stone in road with + on top. In 1990, former surveyor Kelly "found nail over iron at intersection of Maple Grove Road and Hwy. 47. Set R/R spike & 3" al. witness monument". 05/27/99 D. Tlusty, D. Williams found RR spike over 3/4" iron pipe found. Replaced both with a 1" x 30" iron pipe. Did not dig for stone of record at this time. These ties are to preserve the location of the existing monumentation during an upcoming road rebuilding project.

**Physical description of the monument set:**

Set 1" x 30" iron pipe in place of existing RR spike and 3/4" iron pipe found.

**Describe the accessories used to perpetuate the corner. Include a plan view drawing and accessories found/set. Describe measuring point on bearing trees. Show any topographic features that would aid in future recovery of the corner.**

○ Re-bar set 2' south of 13" red pine



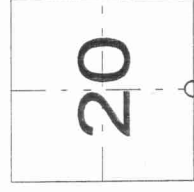
**LEGEND**

- 3/4" x 30" rebar set
- x-x- fenceline
- 2" aluminum monument found
- ▽ PK nail found
- utility pole
- Set white vinyl sign post
- The bearings referenced magnetic bearing near corner.

Field book: FB11-16



Index No.                      R 7 30-12



○ = corner perpetuated

The South Quarter corner of Section 20, T. 30 N., R. 12 E., Langlade County, WI

I, David E. Tlusty, Registered Land Surveyor, as Langlade County Surveyor, certify that the corner location on this record was determined by me and that this U.S. Public Land Survey Monument Record is correct to the best of my knowledge and belief.