

4 301220 0000 2014

LANGLADE COUNTY U.S. PUBLIC LAND CORNER RESTORATION

The Southwest Corner of Section 21, T. 30 N., R. 12 E., Langlade County, WI.

Corner was: (check all that apply)

- Restored through acceptance of an obliterated evidence location.
- Restored through acceptance of a found perpetuated location.
- Determined to be lost and re-established through proportionate methods.
- Show bearings and distances to PLSS corners used for proportioning, and show original distances
- Restored/recovered/re-established in a location that differs from a previously established position.
- Check here if additional information is shown on the reverse side of this form.

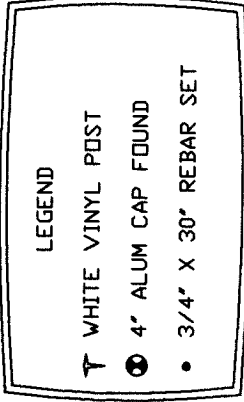
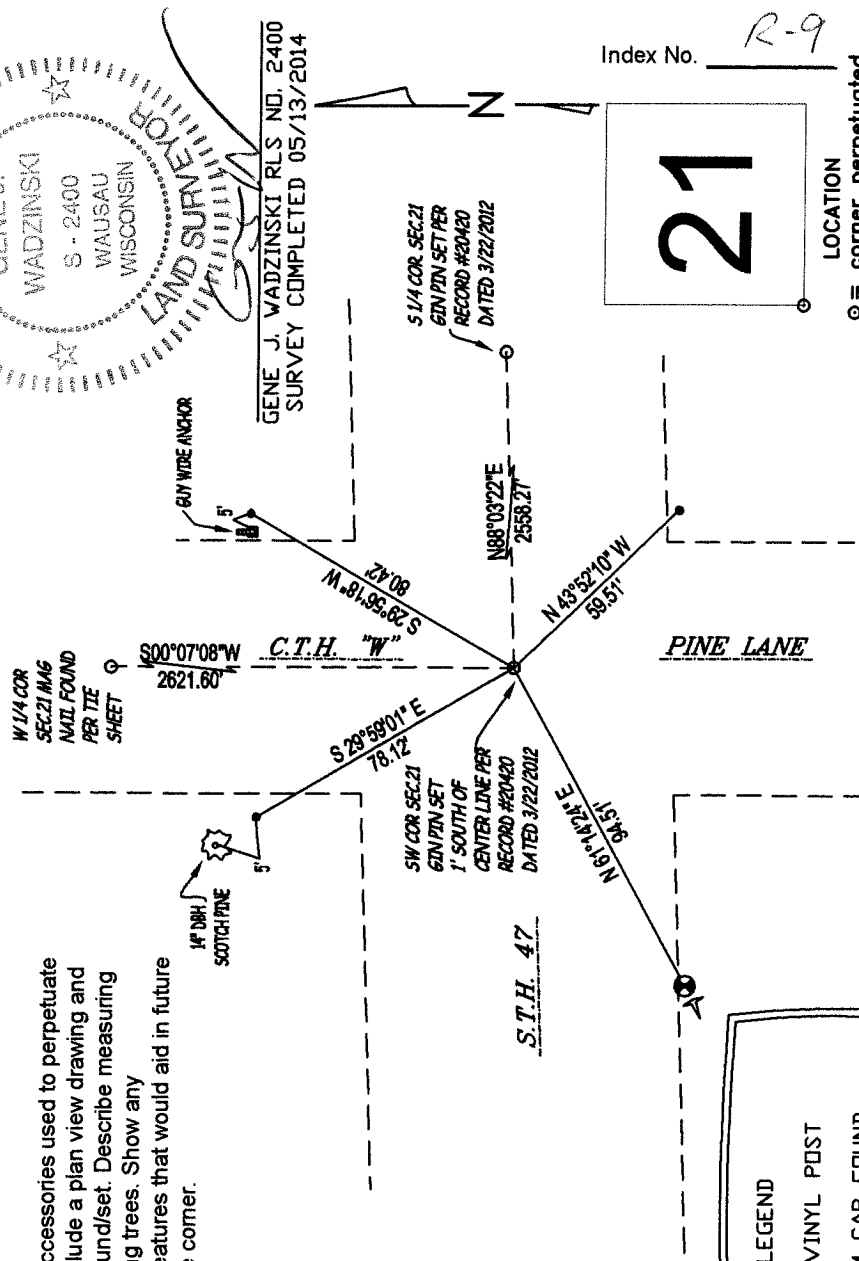
Describe record evidence, recovered physical evidence, occupational evidence, testimonial evidence and all other evidence considered in the recovery/restoration of the corner.

- 1854 ORIGINAL CORNER ESTABLISHED BY JAMES WITHROW.
- 1919 WEBLEY "GREY BOULDER" WITH CROSS ON TOP.
- 1978 HESS PK IN PAVEMENT.
- 1999 TLUSTY PK IN PAVEMENT.
- 2012 D. TLUSTY MAG NAIL FOUND.
- I USED EXISTING CORNERS FROM THE 2012 D. TLUSTY SURVEY TO CALCULATE AND RE-ESTABLISH THE LOCATION OF THIS CORNER.

Physical description of the monument set:

- I SET A GIN PIN AT THE SURFACE OF THE BLACK TOP 0.80 FEET SOUTH OF THE CENTERLINE.

Describe the accessories used to perpetuate the corner. Include a plan view drawing and accessories found/set. Describe measuring point on bearing trees. Show any topographic features that would aid in future recovery of the corner.



THE SOUTHWEST CORNER
SECTION 21, T. 30 N., R. 12 E.,
LANGLADE COUNTY, WI