

LANGLADE COUNTY
U.S. PUBLIC LAND CORNER RESTORATION

The Southeast corner of Section 20, T. 30 N., R. 12 E., Langlade County, WI.

4 3012200000

Corner was: (check all that apply)

- Restored through acceptance of an obliterated evidence location.
- Restored through acceptance of a found perpetuated location.
- Determined to be lost and re-established through proportionate methods.
- Show bearings and distances to PLSS corners used for proportioning, and show original distances).
- Restored/recovered/re-established in a location that differs from a previously established position.
- (Show difference in plan view below).
- Check here if additional information is shown on the reverse side of this form.

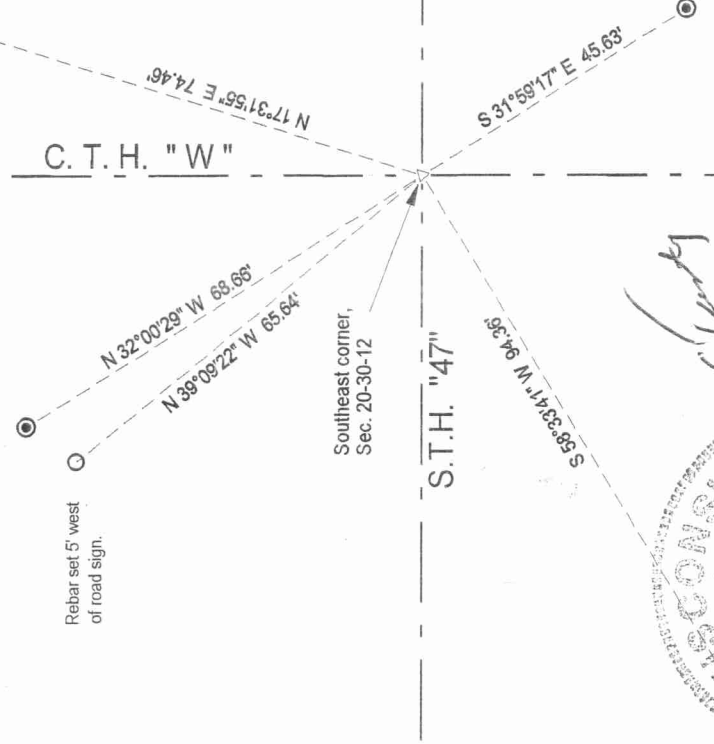
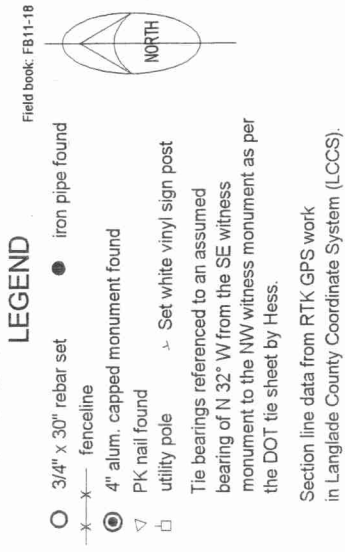
Describe record evidence, recovered physical evidence, occupational evidence, testimonial evidence and all other evidence considered in the recovery/restoration of the corner.

The original corner was established in 1854 by James Withrow. Original bearing trees: hemlock, 8", N21°W, 50 links; hemlock, 12", N52°E, 50 links; white ash, 7", S12°E, 8 links and a hemlock, 10", S84°W, 62 links. Webley, in 1919, described this corner as "grey boulder 10 x 12 x 24 + on top". In 1978, Hess, S-666 from the Dept. of Transportation described the corner as "PK nail in pavement" and set 4 - 4" aluminum capped monuments for witness corners. Prior to road paving in the near future, on 05/22/99 D. Tlusty, D. Williams found PK in road and 4 aluminum capped witness monuments as shown below.

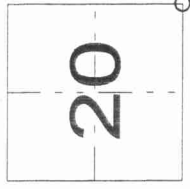
Physical description of the monument set:

Left existing PK in place.

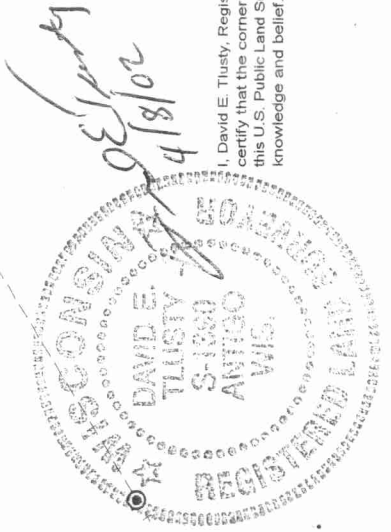
Describe the accessories used to perpetuate the corner. Include a plan view drawing and accessories found/set. Describe measuring point on bearing trees. Show any topographic features that would aid in future recovery of the corner.



Index No. R 9 30-12



○ = corner perpetuated
The Southeast corner of Section 20, T. 30 N., R. 12 E., Langlade County, WI



I, David E. Tlusty, Registered Land Surveyor, as Langlade County Surveyor, certify that the corner location on this record was determined by me and that this U.S. Public Land Survey Monument Record is correct to the best of my knowledge and belief.