

430/2/19 2000 2023

# U.S. PUBLIC LAND SURVEY MONUMENT RECORD

HISTORY OF ORIGINAL CORNER ESTABLISHMENT AND SUBSEQUENT RESTORATION AND DESCRIPTION OF ANY RECORD, MONUMENT OCCUPATIONAL, TESTIMONIAL OR OTHER EVIDENCE CONSIDERED:

THE ORIGINAL CORNER WAS SET BY W. J. NEELY IN 1853. THE ORIGINAL BEARING TREES WERE:

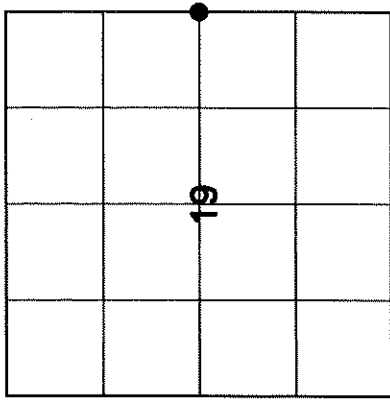
- 14" BASSWOOD S75°E 12.5 LINKS
- 10" IRONWOOD S89°W 26 LINKS

1910 BROOKS MEASURED THE EAST - WEST 1/4 LINE OF SECTION 19

1979 NORDIN EXCAVATED AND FOUND DECAYED WOOD AND SET A 2" PIPE WITH BRASS CAP

2023 I FOUND A RR SPIKE AT THE CORNER AND SET ADDITIONAL TIES

● = LOCATION OF CORNER

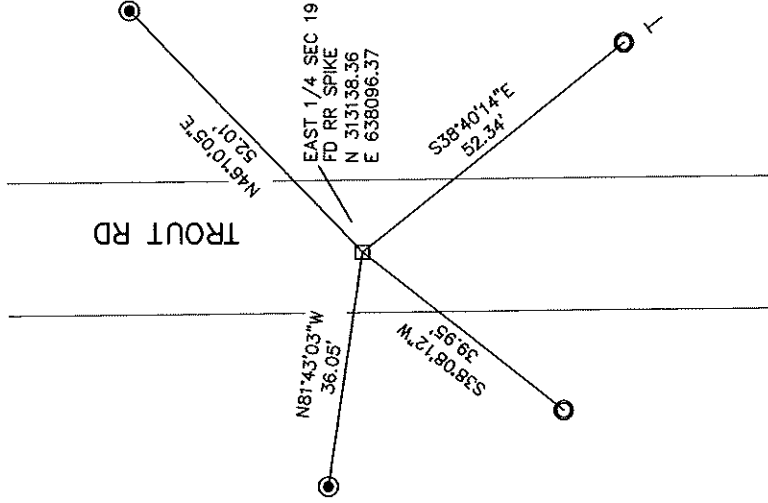


SECTION 19  
 TOWNSHIP 30 NORTH, RANGE 12 EAST  
 TOWN OF NORWOOD  
 LANGLADE, COUNTY, WISCONSIN

CORNER WAS: (CHECK ALL THAT APPLY)

- RESTORED THROUGH ACCEPTANCE OF AN OBLITERATED EVIDENCE LOCATION
- RESTORED THROUGH ACCEPTANCE OF A FOUND PERPETUATED LOCATION
- CONSIDERED A LOST CORNER AND REESTABLISHED THROUGH LOST CORNER PROPORTIONATE METHODS (INCLUDE A PLAN VIEW DRAWING SHOWING DISTANCES AND DIRECTIONS TO OTHER PUBLIC LAND SURVEY CORNERS USED FOR PROPORTIONING AND DETERMINING THE CORNER LOCATION)
- RESTORED OR REESTABLISHED IN A LOCATION THAT DIFFERS FROM A PREVIOUS RESTORATION OR REESTABLISHMENT (INCLUDE A PLAN VIEW DRAWING AND INDICATE WHAT WAS SET AND/OR FOUND)
- CHECK IF THERE IS ADDITIONAL INFORMATION ON BACK

DESCRIBE THE MONUMENT AND ACCESSORIES USED TO PERPETUATE THE LOCATION OF THE CORNER. (INCLUDE A PLAN VIEW DRAWING AND INDICATE WHAT WAS SET AND/OR FOUND) ALSO INCLUDE FOUR TIES TO THE SECTION CORNER AND DESCRIPTION OF THE TIES.



○ SET 3/4" X 30" RE-BAR WEIGHING 1.50 LBS/FT

● FD 1" I. PIPE

● FD WITNESS MONUMENT

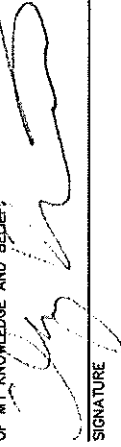
BEARINGS REFERENCED TO THE LANGLADE COUNTY COORDINATE SYSTEM

T SET 6 FOOT WHITE T-POST



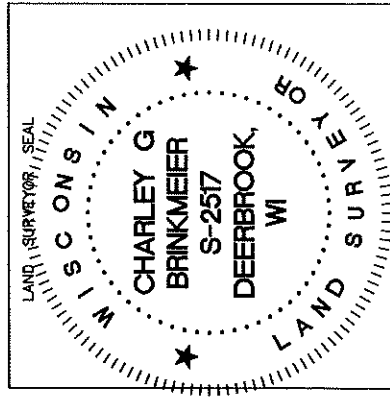
CHARLEY G. BRINKMEIER

(Type or print name) CERTIFY THAT THE CORNER LOCATION SHOWN ON THIS RECORD WAS DETERMINED BY ME OR UNDER MY DIRECTION AND CONTROL AND THAT THIS U.S. PUBLIC LAND SURVEY MONUMENT RECORD IS CORRECT AND COMPLETE TO THE BEST OF MY KNOWLEDGE AND BELIEF.

SIGNATURE 

OCT 20 2023

DATE



P5 30-12

INDEX NO

CERTIFIED LAND CORNER RESTORATION

Index No. P-5

State of Wisconsin }  
County of LANGLADE } ss.

History of original corner establishment:

U. S. GOV'T. FIELD NOTES.

I, R. W. NORDIN, do hereby certify that on the 21ST day of JUNE, 1979, I found evidence of the EAST QUARTER corner of SECTION 19 Township 30 North, Range 12 EAST, Fourth Principal Meridian, as described hereon; and that from this evidence I established a new monument and accessories as described hereon to perpetuate the original location of this corner.

Description of corner evidence found:

EXCAVATED IN ROADBED FOR EVIDENCE OF CORNER. FOUND REMAINS OF DECAYED POST.

Resident witnesses:

S. R. NORDIN

TIM WOLF

JOE HOLLRITH

Description of monument and accessories I established to perpetuate the original location of this corner.

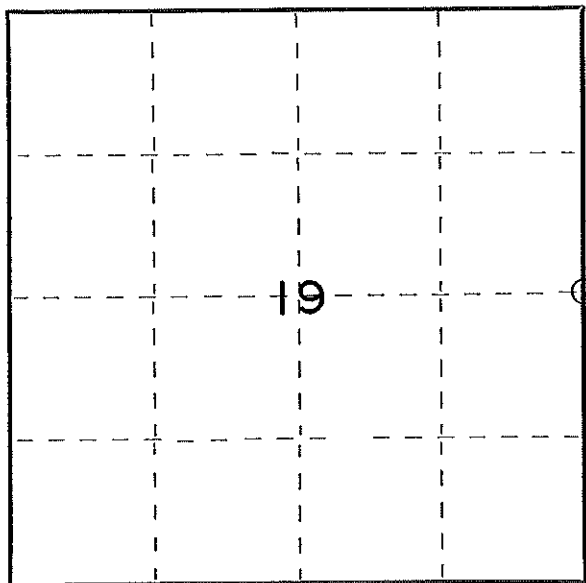
SET A 2" X 36" IRON PIPE WITH BRASS CAP FOR CORNER.  
(SEE REVERSE SIDE FOR TIES.)



43012192000

FORM 985 K. C. MILLER CO., MILWAUKEE

T30N R12E



○ = Corner monument restored.

Dated at SHAWANO, Wis., this 25TH day of JUNE, 1979

Signature: *R. W. Nordin* Title: LAND SURVEYOR Registration No. S-791  
(County Surveyor, Registered Land Surveyor, or other duly authorized official)

Office of Register of Deeds, County of \_\_\_\_\_, I hereby certify that the within instrument was filed in this office for record on the \_\_\_\_\_ day of \_\_\_\_\_, 19\_\_\_\_ at \_\_\_\_\_ o'clock \_\_\_\_\_ M.

(Register of Deeds)

By \_\_\_\_\_ Deputy

43012192000

● DENOTES 1" IRON PIPE SET.  
BEARINGS ARE MAGNETIC.  
A' = N.47°-02'E. 51.92'  
B' = S.53°-15'E. 45.00'  
C' = N.81°-14'W. 37.08'

