

LANGLADE COUNTY
U.S. PUBLIC LAND CORNER RESTORATION

The Southeast corner of Section 19, T. 30 N., R. 12 E., Langlade County, WI.

Corner was: (check all that apply)

- Restored through acceptance of an obliterated evidence location.
- Restored through acceptance of a found perpetuated location.
- Determined to be lost and re-established through proportionate methods.
- Show bearings and distances to PLSS corners used for proportioning, and show original distances).
- Restored/recovered/re-established in a location that differs from a previously established position.
- (Show difference in plan view below).
- Check here if additional information is shown on the reverse side of this form.

4/3012190000

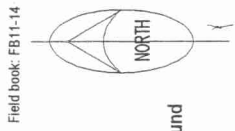
Describe record evidence, recovered physical evidence, occupational evidence, testimonial evidence and all other evidence considered in the recovery/restoration of the corner.

The original corner was established in 1854 by James Withrow. Original bearing trees: elm, 10", N49°W, 28 links; birch, 12", N19°E, 24 links; sugar, 20", S55°E, 34 links and a sugar, 20", S83°W, 61 links. In 1979, R.W. Nordin said "Original corner was obliterated during road construction. Corner was re-set by doubling the distance from East quarter corner to east one-sixteenth corner of the southeast quarter. Corner falls in new blacktop surface of State trunk Highway '47". Drove railroad spike in blacktop for corner." 05/27/99 D. Tlusty measured to existing ties, computed position based on ties and added new ties as shown. No monument set as corner will be destroyed in the near future by road grinding and repaving.

Physical description of the monument set:

No monument set. Computed position from ties falls approximately 10 feet south of the center of STH "47".

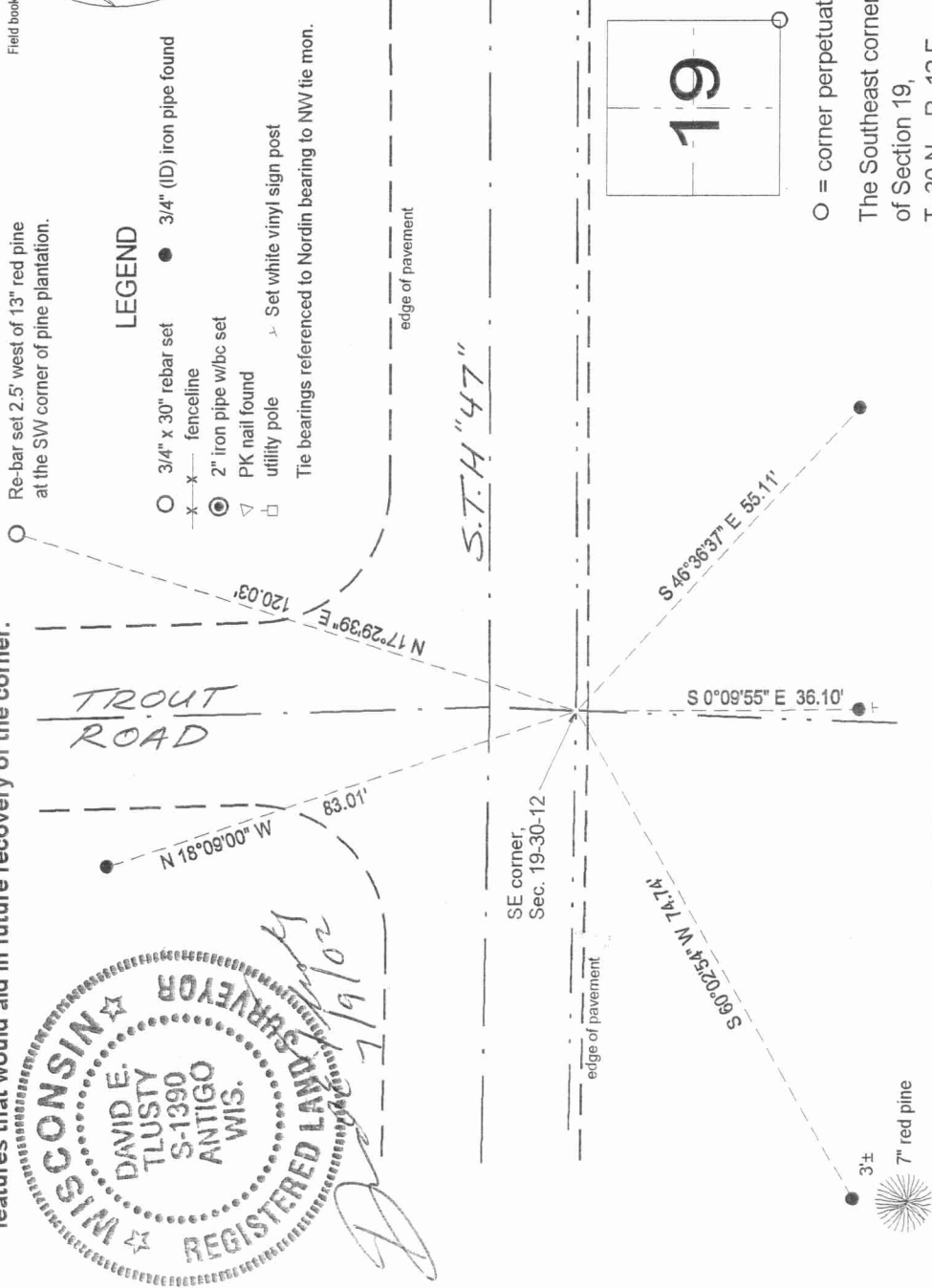
Describe the accessories used to perpetuate the corner. Include a plan view drawing and accessories found/set. Describe measuring point on bearing trees. Show any topographic features that would aid in future recovery of the corner.



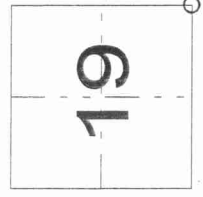
Field book: FB11-14

LEGEND

- 3/4" x 30" rebar set
 - 3/4" (ID) iron pipe found
 - x-x- fenceline
 - ⊙ 2" iron pipe w/bc set
 - ⊖ PK nail found
 - utility pole
 - Set white vinyl sign post
- The bearings referenced to Nordin bearing to NW tie mon.



Index No.



R5
30-12

○ = corner perpetuated
The Southeast corner of Section 19, T. 30 N., R. 12 E., Langlade County, WI

I, David E. Tlusty, Registered Land Surveyor, as Langlade County Surveyor, certify that the corner location on this record was determined by me and that this U.S. Public Land Survey Monument Record is correct to the best of my knowledge and belief.