

CERTIFIED LAND CORNER RESTORATION

Index No. R-5

43012190000

State of Wisconsin }
County of LANGLADE } ss.

I, R. W. NORDIN, do hereby certify that on the 20TH day of JUNE, 19 79, I found evidence of the SOUTHEAST corner of SECTION 19 Township 30, North, Range 12 EAST, Fourth Principal Meridian, as described hereon; and that from this evidence I established a new monument and accessories as described hereon to perpetuate the original location of this corner.

Resident witnesses:

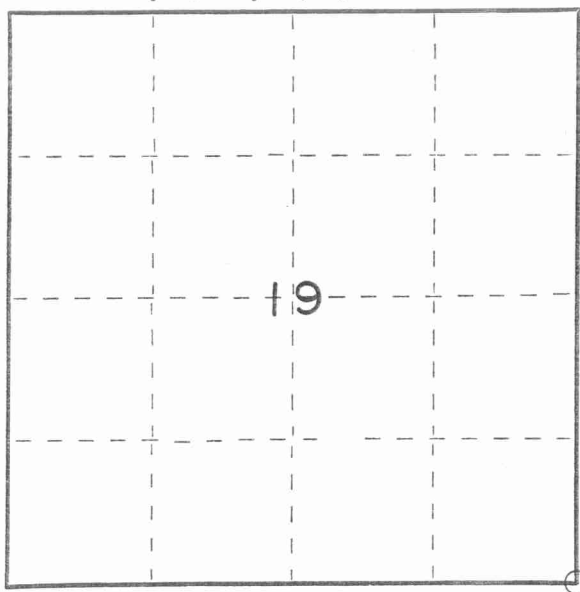
S. R. NORDIN

TIM WOLF

JOE HOLLRITH

FORM 985 K. C. MILLER CO., MILWAUKEE

T 30 N R 12 E



○ = Corner monument restored.

History of original corner establishment:

U. S. GOV'T FIELD NOTES.

Description of corner evidence found:

ORIGINAL CORNER WAS OBLITERATED DURING ROAD CONSTRUCTION. CORNER WAS RE-SET BY DOUBLING THE DISTANCE FROM EAST QUARTER CORNER TO EAST ONE-SIXTEENTH CORNER OF THE SOUTHEAST QUARTER.

Description of monument and accessories I established to perpetuate the original location of this corner.

CORNER FALLS IN NEW BLACKTOP SURFACE OF STATE TRUNK HIGHWAY '47'.

DROVE RAILROAD SPIKE IN BLACKTOP FOR CORNER.

(SEE REVERSE SIDE FOR TIES)



Dated at SHAWANO, Wis., this 20TH day of JUNE, 19 79

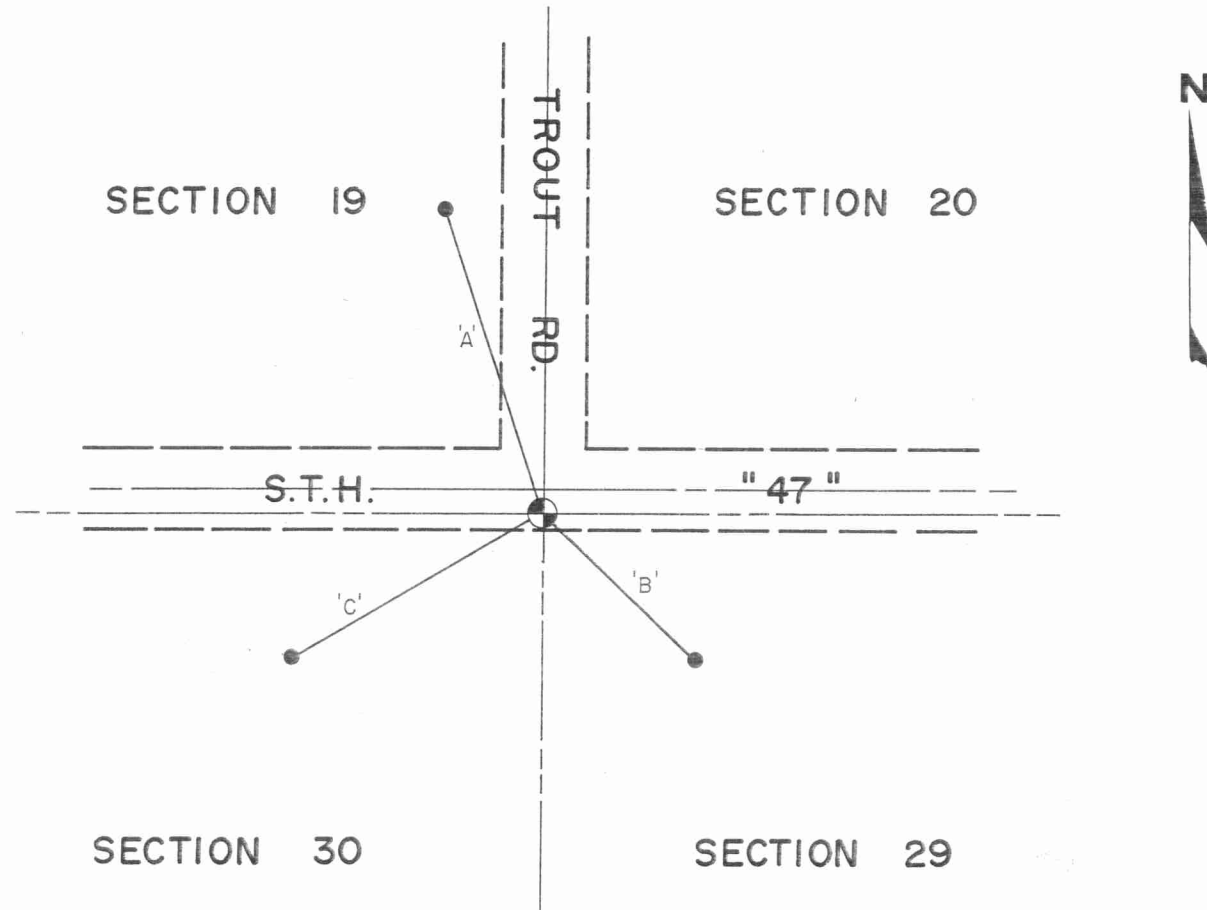
Signature R. W. Nordin Title LAND SURVEYOR Registration No. S-791
(County Surveyor, Registered Land Surveyor, or other duly authorized official)

Office of Register of Deeds, County of _____, I hereby certify that the within instrument was filed in this office for record on the _____ day of _____, 19 _____ at _____ o'clock _____ M.

(Register of Deeds)

By _____ Deputy

43012190000



● DENOTES 1" IRON PIPE SET
BEARINGS ARE MAGNETIC.

'A' = N.18°-09'W. 83.05'

'B' = S.46°-36'E. 55.16'

'C' = S.60°-04'W. 74.83'