

4301216 2000 2023

U S PUBLIC LAND SURVEY MONUMENT RECORD

NOTE: This form is intended and designed to fulfill all requirements of Wisconsin Administrative Code, Chapter A-E 7.08 U.S. Public Land Survey Monument Record (3) (a-f)

A-E 7.08(3)(a) Identity of corner:
EAST 1/4 CORNER SECTION 16,
TOWNSHIP 30 NORTH,
RANGE 12 EAST OF THE 4TH PM,
TOWN OF NORWOOD,
COUNTY OF LANGLADE

WISCORS - LANGLADE COUNTY
N: 318,428.958 USft (XXX,XXX.XXX)
E: 648,609.074 USft (XXX,XXX.XXX)
Datum: NAD83 (2011)
GNSS Method RTK
GNSS Control WISCORS VRS



The coordinate value shown has been verified by the average of two or more GPS observations at a markedly different time. Coordinates shown in parenthesis are previously published values.

A-E 7.08(3)(b)

Original Surveyor: James Withrow

Date of Original Survey Commenced: November 22, 1854
Completed: December 12, 1854

Original Accessories:
Hemlock 15 N 62 1/2° E 17 Links
Hemlock 10 S 56° W 35 Links

See U.S. Public Land Survey Monument Record L13 - October 2, 1993 - Surveyor 1390 - David E. Tlusty

THENCE:

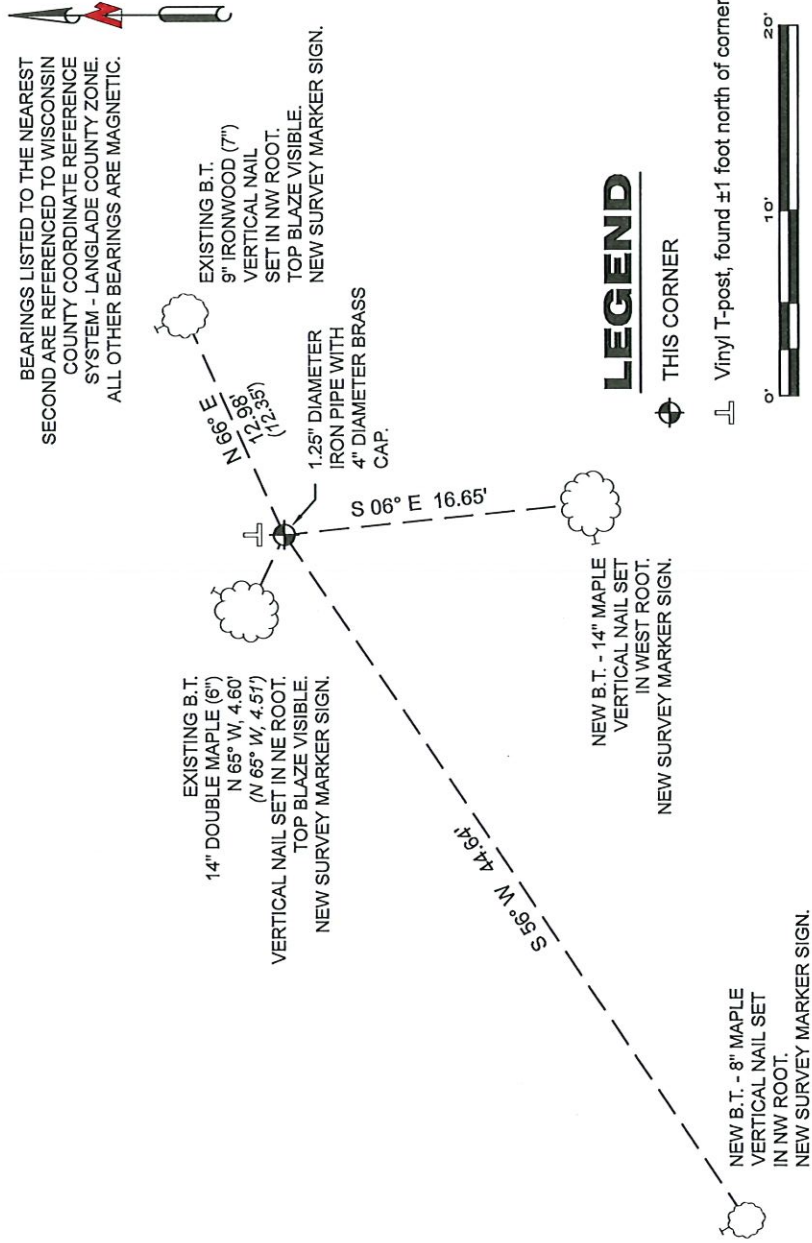
September 20, 2002 - Surveyor 887-Thomas R. Arnott, indicates this position as "county alum. mon. fd" on Langlade County Record #10593.

November 17, 2016 - Surveyor 2671-Timothy J. Rusch, indicates this position as "computed" on Langlade County Record #20484.

June 6, 2023 - I found a 1.25" diameter iron pipe with a 4" diameter brass Langlade County cap. The monument extends ±0.30 feet above grade. I also found 2 of Tlusty's bearing trees, alive and in good condition.

I set new nails in the 2 existing bearing trees and established 2 new reference monuments as shown below.

A-E 7.08(3)(c)(d) Plan view of corner with references to at least 4 witness monuments.



A-E 7.08(3)(e) 1854 Surveyor set a post, 1993 Surveyor set a 1 1/4" diameter black iron pipe with a 4" diameter brass cap, 2002 Surveyor found county aluminum monument, 2016 Surveyor computed the position. 2023 - I found a 1.25" diameter iron pipe with a 4" diameter brass Langlade County cap.

A-E 7.08(3)(f) I accept this monument as a FOUND PERPETUATED LOCATION of the corner.
A-E 7.08(3)(g)(h) This corner was not determined through lost-corner-proportionate methods.

A-E 7.08(3)(i) I, Jeffrey L. DeMuth, Professional Land Surveyor No. S-2656, hereby certify that the corner location on this record was determined by me or under my direction and control, and that this U.S. Public Land Survey Monument Record is correct and complete to the best of my knowledge, and belief.



Jeffrey L. DeMuth

 SIGNATURE

September 19, 2023

 DATE

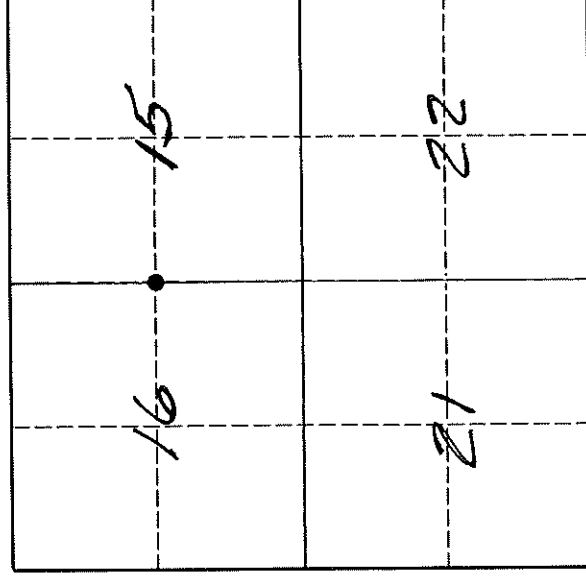
L13 30-12

U. S. PUBLIC LAND SURVEY MONUMENT RECORD

I N S T R U C T I O N S:

This record shall show the location of the corner and shall include all of the following nine elements (a through i).

- (a) Identify the corner by reference to the U.S. public land survey system.
- = Corner monument restored.



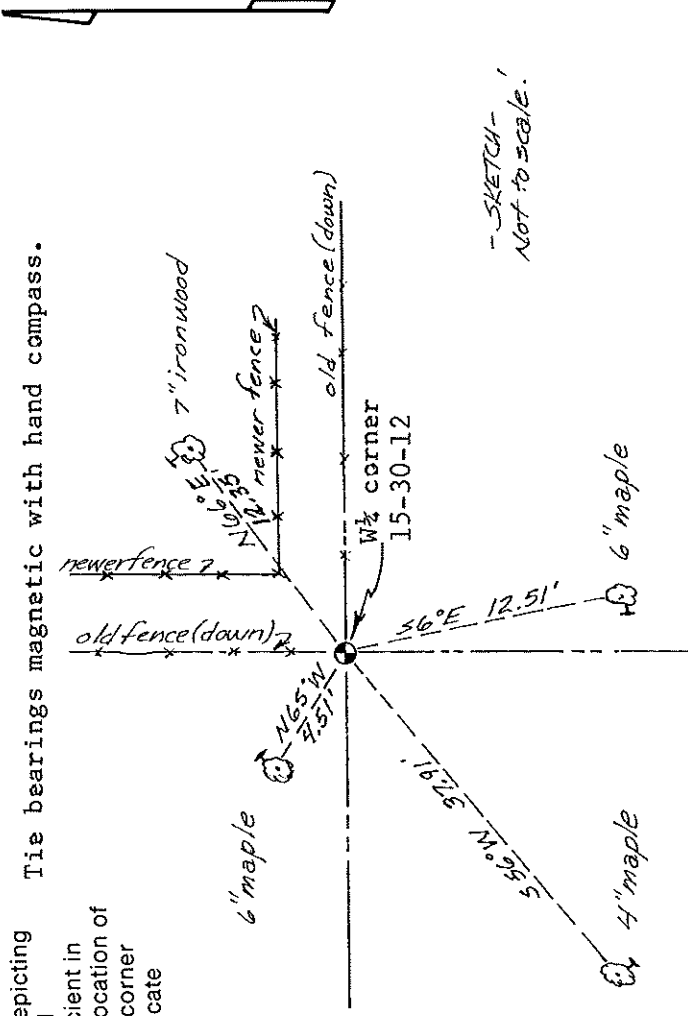
The West Quarter corner of Section 15, Township 30 North, Range 12 East, Langlade County, Wisconsin.

T. 30 N., R. 12 E.

- (b) Describe any record evidence, monument evidence, occupational evidence, testimonial evidence or any other material evidence you considered, and whether the monument was found or placed.
 The original corner was set in 1854 by James Withrow, Deputy Surveyor. Original bearing trees: Hemlock, 15", N62½E, 21 lks, and a Hemlock, 10", S56W, 25 lks. In 1917, Malcolm Hutchinson found one original BT and point of wood stake. He measured 2676.96' to the section corner to the north. In 1945, Henry Olk tied the Moose Lake Beach Plat to the corner. On 10/08/92 I found an old pointed wood post, approx. 4" dia, rotted to about 1" square on top. Post is at the intersection of old fences (both down) running to the east and north. From this post, I measure north, 2675.23' to the section corner. I accept the location of the old wood post as the best evidence of the original corner, and it its place, I set a 1½" x 36" flared bottom, black iron pipe with a 4" dia brass cap, top of which is 0.3' above ground. On CSM #281331, Kelly shows an aluminum monument here, but I couldn't find it.
 In the plan view drawing below, provide reference ties to at least 4 witness monuments, or, if the location is within a municipality, to at least 2 witness monuments. (Witness monuments shall be made of concrete, natural stone, iron or other equally durable material.)
 Describe witness monuments.

☉ = Bearing tree with "BT" scribed in high blaze facing corner. Distance is to aluminum nail (painted blue) in low blaze on side of tree.

☉ = Bearing tree with "BT" scribed in high blaze facing corner. Distance is to aluminum nail (painted blue) in low blaze on side of tree.
- (c) Show a plan view drawing depicting the relevant monuments and reference ties which is sufficient in detail to enable accurate relocation of the corner monument if the corner monument is disturbed. Indicate north.



Describe any material discrepancy between the location of the corner as restored or reestablished and the location of that corner as previously restored or reestablished by distance and direction. Show the discrepancy on the plan view drawing under (d), above. Show the distances between the corner as previously restored or reestablished and (1) the corner as restored or reestablished, and (2) to at least 2 of the witness monuments shown on the drawing in (d), above.

No discrepancy, except that I couldn't find an aluminum monument here that Kelly said he set (CSM #281331).

(f) Was the corner restored through acceptance of (1) an obliterated evidence location, or, (2) a found perpetuated location.?
Corner was restroed as described on the front side of this form.

(g & h) Was the corner reestablished through lost corner proportionate methods? If so, show the method, including the directions and distances to other public land survey corners used as evidence or used for proportioning in determining the corner location.

No.

(i) I, David E. Tlusty, Langlade County Surveyor,
(type or print name)

certify that the corner location shown on this record was determined by me or under my direction and control and that this U.S. Public Land Survey Monument Record is correct and complete to the best of my knowledge and belief.

David E. Tlusty
Signature

10/2/93
Date

