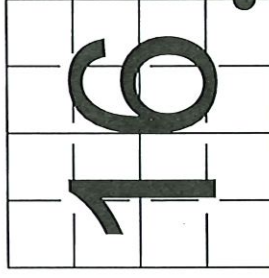


4301216 0003 2023

U S PUBLIC LAND SURVEY MONUMENT RECORD

NOTE: This form is intended and designed to fulfill all requirements of Wisconsin Administrative Code, Chapter A-E 7.08 U.S. Public Land Survey Monument Record (3) (a-)



A-E 7.08(3)(g) Identity of corner:
MEANDER CORNER EAST LINE OF SECTION 16, TOWNSHIP 30 NORTH, RANGE 12 EAST OF THE 4TH PM, TOWN OF NORWOOD, COUNTY OF LANGLADE
WISCONSIN - LANGLADE COUNTY
N: 316,112.210 USft (XXX,XXX.XXX)
E: 648,749.565 USft (XXX,XXX.XXX)
Datum: NAD83 (2011)
GNSS Method RTK
GNSS Control WISCORS VRS

The coordinate value shown has been verified by the average of two or more GPS observations at a markedly different time. Coordinates shown in parenthesis are previously published values.

A-E 7.08(3)(b)

Original Surveyor: James Withrow

Date of Original Survey	Completed:	November 22, 1854	December 12, 1854	Original Accessories:
		Tamarac 14	N 63° E	21 Links
		Cedar 8	N 8° W	12 1/2 Links

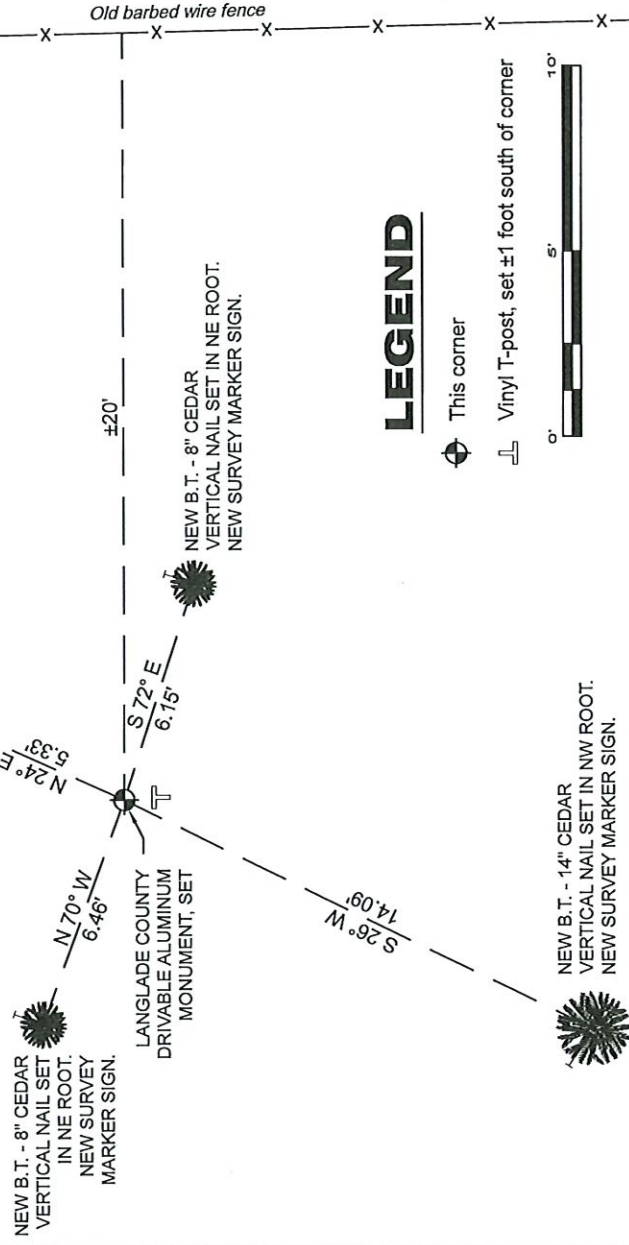
THENCE:

June 6, 2023 - I found a old barbed wire fence, falling down and near the calculated east line of section 16. I also found the meander corner on the south line of Section 15 as established by Surveyor 2468 - Dean Williams, and Surveyor 877 - Thomas R. Arnott, being a 1" diameter X 60" long aluminum pipe monument with a 2.5" diameter aluminum cap near the east shore of Moose Lake and referenced on U.S. Public Land Survey Monument Record N 13-14. I also found a 2" outside diameter iron pipe at the west 1/16th corner of Section 15, recorded as a 1 1/2" X 30" iron pipe set by Surveyor 877 - Thomas R. Arnott on Langlade County record #10593.

I calculated the position of the section corner common to Sections 15, 16, 21 & 22 by extending a line west from Arnott's west 1/16th corner, through the Williams/Arnott meander corner 36.96 feet west of the meander corner (0.56 chains in the original field notes). This location is in Moose Lake approximately 10.5 feet west of the old barbed wire fence extended south. I established the meander corner location, 285.12 feet (4.32 chains in the original field notes) north of the calculated section corner, and on a straight line between the calculated southeast corner of Section 16, and the found east 1/4 corner of Section 16. This position falls ±20 feet west of the old barbed wire fence. NOTE: extending the old barbed wire fence north, it would fall ± 100 feet east of the east 1/4 corner. It was therefore discarded as evidence of the section line.

July 21, 2023 - I set a 1" diameter X 42" long aluminum pipe, with a 3.25" diameter Langlade County aluminum cap, at the position described above. I established 4 new reference monuments as shown below.

A-E 7.08(3)(c)(d) Plan view of corner with references to at least 4 witness monuments.



BEARINGS LISTED TO THE NEAREST SECOND ARE REFERENCED TO WISCONSIN COUNTY COORDINATE REFERENCE SYSTEM - LANGLADE COUNTY ZONE. ALL OTHER BEARINGS ARE MAGNETIC.

LEGEND

- This corner
- Vinyl T-post, set ±1 foot south of corner



A-E 7.08(3)(e) 1854 Surveyor set a post. I set a 1" diameter X 42" long aluminum pipe with a 3.25" diameter Langlade County aluminum cap.

A-E 7.08(3)(f) I restored the corner through ACCEPTANCE OF AN OBLITERATED LOCATION.

A-E 7.08(3)(g)(h) This corner was not determined through lost-corner-proportionate methods.

A-E 7.08(3)(i) I, Jeffrey L. DeMuth, Professional Land Surveyor No. S-2656, hereby certify that the corner location on this record was determined by me or under my direction and control, and that this U.S. Public Land Survey Monument Record is correct and complete to the best of my knowledge, and belief.

SIGNATURE _____ September 19, 2023

DATE



M-N 13 30-12