

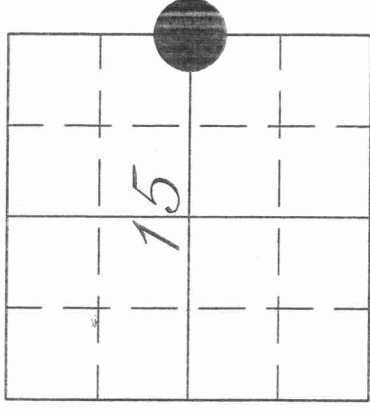
43012152000

U.S. PUBLIC LAND SURVEY MONUMENT RECORD

HISTORY OF ORIGINAL CORNER ESTABLISHMENT AND SUBSEQUENT RESTORATION AND DESCRIPTION OF ANY RECORD, MONUMENT OCCUPATIONAL, TESTIMONIAL OR OTHER EVIDENCE CONSIDERED:

THE ORIGINAL QUARTERCORNER WAS ESTABLISHED IN 1854 BY JAMES WITHROW. ORIGINAL BEARING TREES: POPPLE 12", S551/2W, 24LKS., MAPLE 10" S87E, 10LKS. ON DEC. 9, 1996, DAN HIGGINBOTHAM AND GERRY BAHAR SEARCHED FOR QUARTERCORNER ONE HALF MILE EAST OF HWY S AND FOUND A FENCE INTERSECTION WHICH WE ACCEPTED AS THE BEST EVIDENCE OF THE ORIGINAL LOCATION. WE SET A LANGLADE CO. BRASS CAP MONUMENT AT THE QUARTERCORNER LOCATION AND TIED OUT.

● = LOCATION OF CORNER



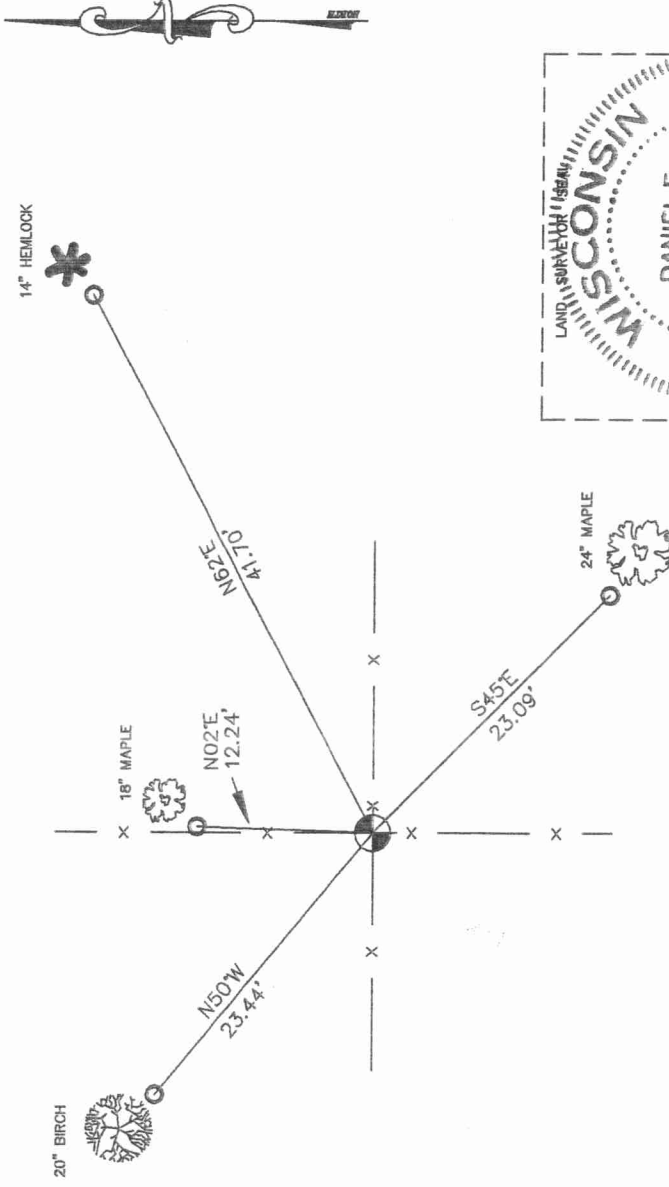
SECTION 15
TOWNSHIP 30 NORTH, RANGE 12 EAST
TOWN OF NORWOOD
LANGLADE COUNTY, WISCONSIN

CORNER WAS: (CHECK ALL THAT APPLY)

- RESTORED THROUGH ACCEPTANCE OF AN OBLITERATED EVIDENCE LOCATION
- RESTORED THROUGH ACCEPTANCE OF A FOUND PERPETUATED LOCATION
- CONSIDERED A LOST CORNER AND REESTABLISHED THROUGH LOST CORNER PROPORTIONATE METHODS (INCLUDE A PLAN VIEW DRAWING SHOWING DISTANCES AND DIRECTIONS TO OTHER PUBLIC LAND SURVEY CORNERS USED FOR PROPORTIONING AND DETERMINING THE CORNER LOCATION)
- RESTORED OR REESTABLISHED IN A LOCATION THAT DIFFERS FROM A PREVIOUS RESTORATION OR REESTABLISHMENT (INCLUDE A PLAN VIEW DRAWING AND INDICATE WHAT WAS SET AND/OR FOUND)
- CHECK IF THERE IS ADDITIONAL INFORMATION ON BACK

DESCRIBE THE MONUMENT AND ACCESSORIES USED TO PERPETUATE THE LOCATION OF THE CORNER. (INCLUDE A PLAN VIEW DRAWING AND INDICATE WHAT WAS SET AND/OR FOUND) ALSO INCLUDE FOUR TIES TO THE SECTION CORNER AND DESCRIPTION OF THE TIES.

- SET 3/4" ROD AT TIES
- ⊙ SET BRASS CAP MONUMENT



DANIEL E. HIGGINBOTHAM

(Type or print name) CERTIFY THAT THE CORNER LOCATION SHOWN ON THIS RECORD WAS DETERMINED BY ME OR UNDER MY DIRECTION AND CONTROL AND THAT THIS U.S. PUBLIC LAND SURVEY MONUMENT RECORD IS CORRECT AND COMPLETE TO THE BEST OF MY KNOWLEDGE AND BELIEF.

Dan Higginbotham
SIGNATURE

9/04/02
DATE



717

INDEX NO.