

# LANGLADE COUNTY U.S. PUBLIC LAND CORNER RESTORATION

The South Quarter corner of Section 15, T. 30 N., R. 12 E., Langlade County, WI.

**Corner was: (check all that apply)**

43012150020

- Restored through acceptance of an obliterated evidence location.
- Restored through acceptance of a found perpetuated location.
- Determined to be lost and re-established through proportionate methods.
- Show bearings and distances to PLSS corners used for proportioning, and show original distances).
- Restored/recovered/re-established in a location that differs from a previously established position.
- (Show difference in plan view below).
- Check here if additional information is shown on the reverse side of this form.

**Describe record evidence, recovered physical evidence, occupational evidence, testimonial evidence and all other evidence considered in the recovery/restoration of the corner.**

The original corner was established in 1854 by James Withrow. Original bearing trees: birch, 8", N59.5°E, 9 links and a hemlock, 24", S55°E, 23 links. There are not other old survey records on file for this corner. In 1979, Wesley Tradewell found a 6" spike, 2" below the pavement and accepted it for the corner. He replaced it with an iron rod and set two brass capped pipes for reference monuments. 07/16/08 D. Tlusty, found PK nail in pavement. Distance to SE ip w/brass cap works fine. SW ip w/brass cap is not usable. Accepted PK found as representative of the corner accepted by Tradewell. Set new ties as shown below.

**Physical description of the monument set:**

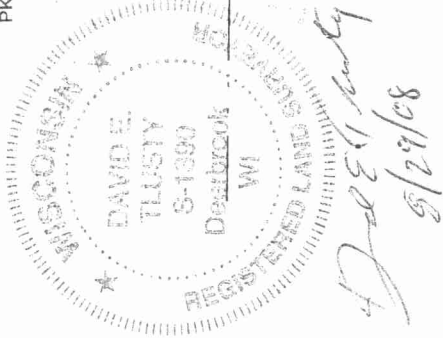
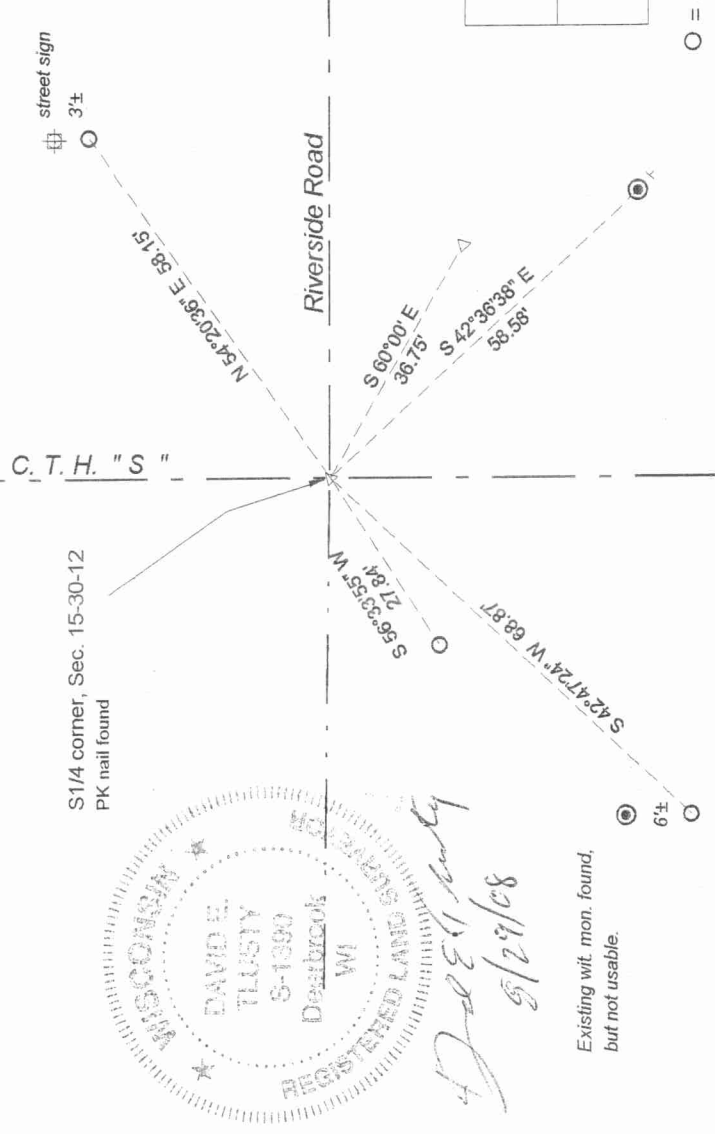
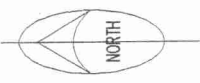
I left the existing PK nail in place.

**Describe the accessories used to perpetuate the corner. Include a plan view drawing and accessories found/set. Describe measuring point on bearing trees. Show any topographic features that would aid in future recovery of the corner.**

**LEGEND**

- 3/4" x 30" rebar set
- iron pipe found
- fenceline
- 2" iron pipe found
- nail set
- utility pole
- Set white vinyl sign post
- Tie bearings magnetic with hand compass.

Field book: FB11-54



Existing wit. mon. found, but not usable.

Index No.           N15 30-12          



O = corner perpetuated  
The South quarter corner of Section 15,  
T. 30 N., R. 12 E.,  
Langlade County, WI

I, David E. Tlusty, Registered Land Surveyor, as Langlade County Surveyor, certify that the corner location on this record was determined by me and that this U.S. Public Land Survey Monument Record is correct to the best of my knowledge and belief.