

CERTIFIED LAND CORNER RESTORATION

Index No. N-15

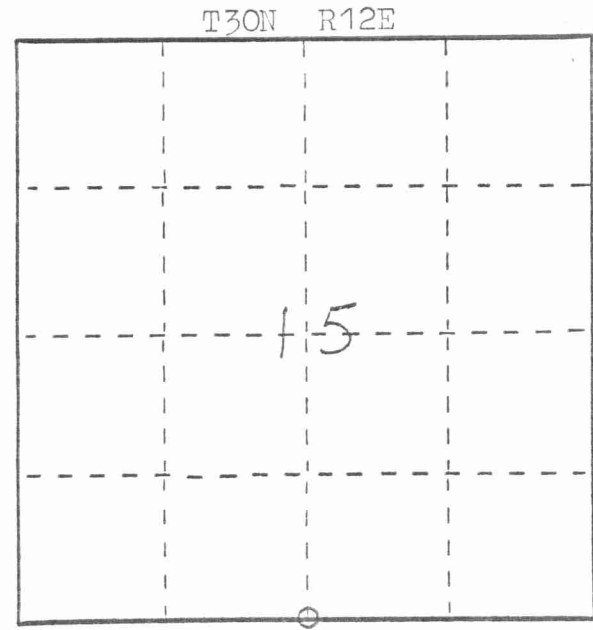
43012150020

State of Wisconsin }  
 County of Lanlade } ss.

I, Wesley J. Tradewell, do hereby certify that on the 2nd day of August, 1979, I found evidence of the South 1/4 corner of Section 15 Township 30, North, Range 12 East, Fourth Principal Meridian, as described hereon; and that from this evidence I established a new monument and accessories as described hereon to perpetuate the original location of this corner.

Resident witnesses:  
 \_\_\_\_\_  
 \_\_\_\_\_  
 \_\_\_\_\_

FORM 985 H. C. MILLER CO., MILWAUKEE



○ = Corner monument restored.

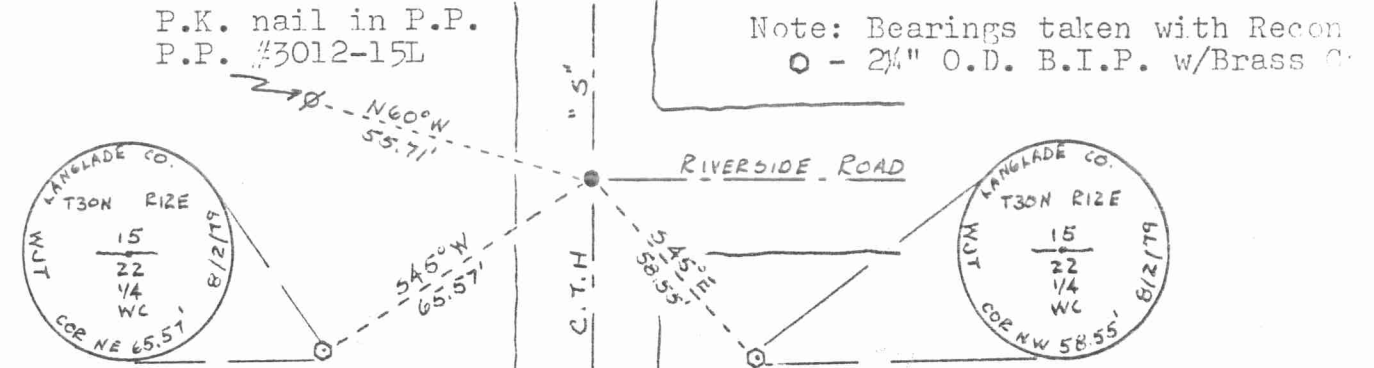
History of original corner establishment:



Description of corner evidence found:

Found 6" spike 2" below pavement. Replaced spike with a 3/4"x24" iron rod. Distance to North 1/4 corner of Section 15 checks with distance shown on C.T.H. "S" R-O-W plat. Corner checks good with centerline of "S" and Riverside Road.

Description of monument and accessories I established to perpetuate the original location of this corner.



Dated at Antigo, Wis., this 7th day of August, 1979.

Signature Wesley J. Tradewell Title Registered Land Surveyor Registration No. 1342  
 (County Surveyor, Registered Land Surveyor, or other duly authorized official)

Office of Register of Deeds, County of \_\_\_\_\_, I hereby certify that the within instrument was filed in this office for record on the \_\_\_\_\_ day of \_\_\_\_\_, 19\_\_\_\_ at \_\_\_\_\_ o'clock \_\_\_\_\_ M.

\_\_\_\_\_  
 (Register of Deeds)

By \_\_\_\_\_ Deputy