

X

4301214 2000 U.S. PUBLIC LAND SURVEY MONUMENT RECORD

HISTORY OF ORIGINAL CORNER ESTABLISHMENT AND SUBSEQUENT RESTORATION AND DESCRIPTION OF ANY RECORD, MONUMENT OCCUPATIONAL, TESTIMONIAL OR OTHER EVIDENCE CONSIDERED:

THE ORIGINAL CORNER WAS SET BY J. WITHROW IN 1854. THE ORIGINAL BEARING TREES WERE:

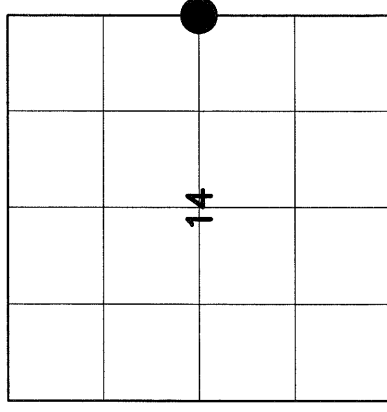
8" SPRUCE S62°W - 19 LINKS

12" SPRUCE N61°E - 26 LINKS

IN 1901 WEBLEY FOUND THE ORIGINAL CORNER & MARKED A NEW BEARING TREE:

9" TAMARACK AT S55°E - 51 LINKS

USING THE FENCE LINE RUNNING SOUTH FROM THE NE CORNER AS DIRECTION WE PRORATED WEBLEY'S DISTANCES FROM THE NE CORNER AND THE SE CORNERS OF THE SECTION. WE THEN SET A 2" X 30" LANGLADE COUNTY BRASS CAP MONUMENT.



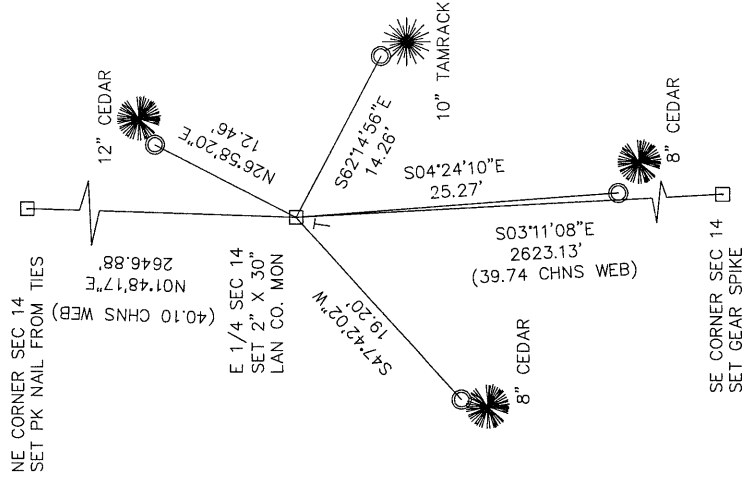
● = LOCATION OF CORNER

SECTION 14
 TOWNSHIP 30 NORTH, RANGE 12 EAST
 TOWN OF NORWOOD
 LANGLADE COUNTY, WISCONSIN

CORNER WAS: (CHECK ALL THAT APPLY)

- RESTORED THROUGH ACCEPTANCE OF AN OBLITERATED EVIDENCE LOCATION
- RESTORED THROUGH ACCEPTANCE OF A FOUND PERPETUATED LOCATION
- CONSIDERED A LOST CORNER AND REESTABLISHED THROUGH LOST CORNER PROPORTIONATE METHODS (INCLUDE A PLAN VIEW DRAWING SHOWING DISTANCES AND DIRECTIONS TO OTHER PUBLIC LAND SURVEY CORNERS USED FOR PROPORTIONING AND DETERMINING THE CORNER LOCATION)
- RESTORED OR REESTABLISHED IN A LOCATION THAT DIFFERS FROM A PREVIOUS RESTORATION OR REESTABLISHMENT (INCLUDE A PLAN VIEW DRAWING AND INDICATE WHAT WAS SET AND/OR FOUND)
- CHECK IF THERE IS ADDITIONAL INFORMATION ON BACK

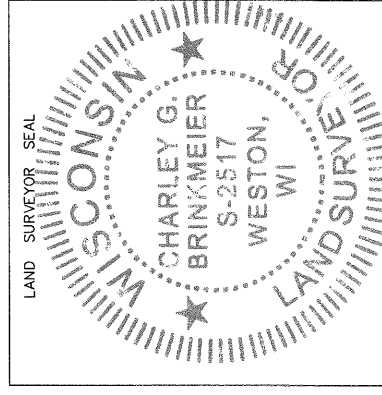
DESCRIBE THE MONUMENT AND ACCESSORIES USED TO PERPETUATE THE LOCATION OF THE CORNER. (INCLUDE A PLAN VIEW DRAWING AND INDICATE WHAT WAS SET AND/OR FOUND) ALSO INCLUDE FOUR TIES TO THE SECTION CORNER AND DESCRIPTION OF THE TIES.



SET 3/4" x 24" I. PIPE
AT ALL TIE LOCATIONS



BEARINGS ARE REFERENCED TO THE LANGLADE CO. COORDINATE SYSTEM



CHARLEY G. BRINKMEIER

(type or print name) CERTIFY THAT THE CORNER LOCATION SHOWN ON THIS RECORD WAS DETERMINED BY ME OR UNDER MY DIRECTION AND CONTROL AND THAT THIS U.S. PUBLIC LAND SURVEY MONUMENT RECORD IS CORRECT AND COMPLETE TO THE BEST OF MY KNOWLEDGE AND BELIEF.

Ch Br
 SIGNATURE

11-15-10

DATE

212 30-12

INDEX NO.