

43012/14 0020 2023

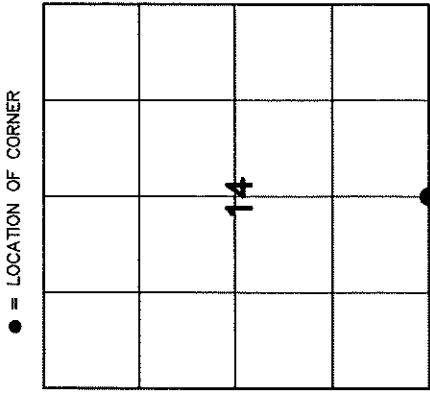
# U.S. PUBLIC LAND SURVEY MONUMENT RECORD

HISTORY OF ORIGINAL CORNER ESTABLISHMENT AND SUBSEQUENT RESTORATION AND DESCRIPTION OF ANY RECORD, MONUMENT OCCUPATIONAL, TESTIMONIAL OR OTHER EVIDENCE CONSIDERED:

THE ORIGINAL CORNER WAS SET BY WITHROW IN 1853. THE ORIGINAL BEARING TREES WERE:  
 9" HEMLOCK N8°W 22 LINKS  
 14" BIRCH S19°W 14 LINKS

1978 NORDIN FOUND AN IRON PIPE AND SET A BRASS CAP MONUMENT

2023 I FOUND A 2" IRON PIPE AND SET ADDITIONAL TIES



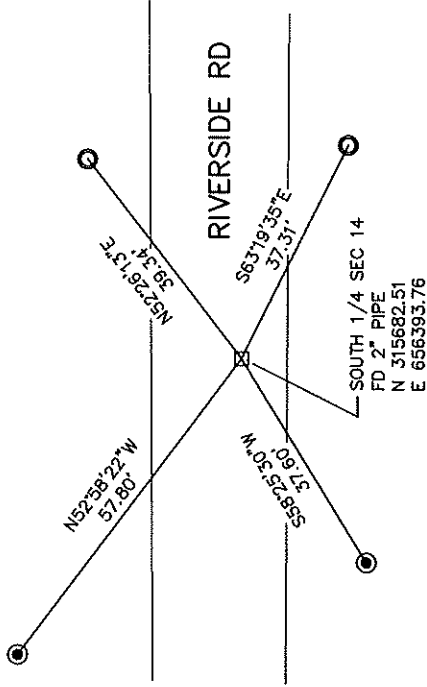
● = LOCATION OF CORNER

SECTION 14  
 TOWNSHIP 30 NORTH, RANGE 12 EAST  
 TOWN OF NORWOOD  
 LANGLADE COUNTY, WISCONSIN

CORNER WAS: (CHECK ALL THAT APPLY)

- RESTORED THROUGH ACCEPTANCE OF AN OBLITERATED EVIDENCE LOCATION
- RESTORED THROUGH ACCEPTANCE OF A FOUND PERPETUATED LOCATION
- CONSIDERED A LOST CORNER AND REESTABLISHED THROUGH LOST CORNER PROPORTIONATE METHODS (INCLUDE A PLAN VIEW DRAWING SHOWING DISTANCES AND DIRECTIONS TO OTHER PUBLIC LAND SURVEY CORNERS USED FOR PROPORTIONING AND DETERMINING THE CORNER LOCATION)
- RESTORED OR REESTABLISHED IN A LOCATION THAT DIFFERS FROM A PREVIOUS RESTORATION OR REESTABLISHMENT (INCLUDE A PLAN VIEW DRAWING AND INDICATE WHAT WAS SET AND/OR FOUND)
- CHECK IF THERE IS ADDITIONAL INFORMATION ON BACK

DESCRIBE THE MONUMENT AND ACCESSORIES USED TO PERPETUATE THE LOCATION OF THE CORNER. (INCLUDE A PLAN VIEW DRAWING AND INDICATE WHAT WAS SET AND/OR FOUND) ALSO INCLUDE FOUR TIES TO THE SECTION CORNER AND DESCRIPTION OF THE TIES.



- SET 3/4" X 30" RE-BAR WEIGHING 1.50 LBS/FT
- FD 1" I. PIPE
- FD WITNESS MONUMENT
- BEARINGS REFERENCED TO THE LANGLADE COUNTY COORDINATE SYSTEM
- T SET 6 FOOT WHITE T-POST



CHARLEY G. BRINKMEIER

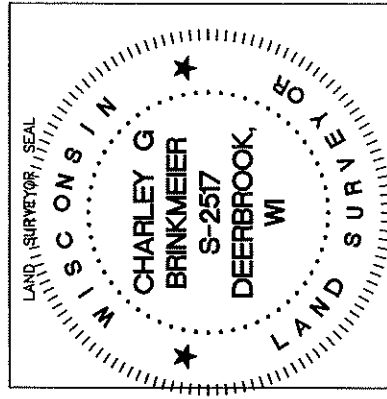
(Type or print name) CERTIFY THAT THE CORNER LOCATION SHOWN ON THIS RECORD WAS DETERMINED BY ME OR UNDER MY DIRECTION AND CONTROL AND THAT THIS U.S. PUBLIC LAND SURVEY MONUMENT RECORD IS CORRECT AND COMPLETE TO THE BEST OF MY KNOWLEDGE AND BELIEF.

*[Handwritten Signature]*

SIGNATURE

OCT 20 2023

DATE



INDEX NO

CERTIFIED LAND CORNER RESTORATION

Index No. N-19

State of Wisconsin }  
County of LANGLADE } ss.

I, R. W. NORDIN, do hereby  
certify that on the 6TH day  
of JULY, 19 78, I found  
evidence of the SOUTH QUARTER  
corner of SECTION 14  
Township 30, North, Range  
12 EAST, Fourth Principal Meridian,  
as described hereon; and that from this evidence  
I established a new monument and accessories  
as described hereon to perpetuate the original  
location of this corner.

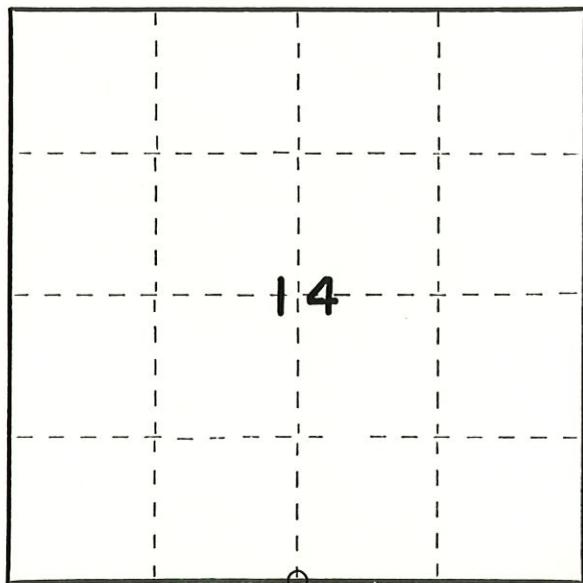
Resident witnesses:

M. J. NORDIN

CLIFF PONCHAUD

TIM WOLF

T 30 N 12 E



○ = Corner monument restored.

History of original corner establishment:

U. S. GOV'T. FIELD NOTES.

Description of corner evidence found:

FOUND 1" IRON PIPE AT POINT FOR CORNER.

Description of monument and accessories I established to perpetuate the original location of this corner.

SET STANDARD LANGLADE COUNTY BRASS-CAPPED IRON PIPE FOR CORNER.

( SEE REVERSE SIDE FOR TIES.)

Dated at SHAWANO, Wis., this 10TH day of JULY, 19 78.

Signature R. W. Nordin Title LAND SURVEYOR Registration No. S-791  
(County Surveyor, Registered Land Surveyor, or other duly authorized official)

Office of Register of Deeds, County of \_\_\_\_\_, I hereby certify that the within  
instrument was filed in this office for record on the \_\_\_\_\_ day of \_\_\_\_\_, 19 \_\_\_\_\_  
at \_\_\_\_\_ o'clock \_\_\_\_\_ M.

\_\_\_\_\_  
(Register of Deeds)

By \_\_\_\_\_ Deputy



43512140020

FORM 985 H. C. MILLER CO., MILWAUKEE

43012140020

N

