

CERTIFIED LAND CORNER RESTORATION

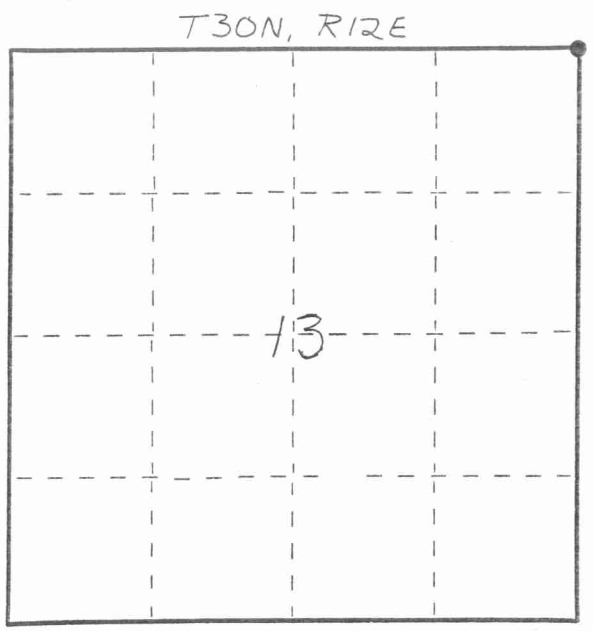
Index No. J-25

4301210000

State of Wisconsin }
 County of LANGLADE } ss.

I, WILLIAM F. KELLY, do hereby certify that on the 6th day of Nov., 1981, I found evidence of the NE corner of SECT. 13 Township 30, North, Range , Fourth Principal Meridian, as described hereon; and that from this evidence I established a new monument and accessories as described hereon to perpetuate the original location of this corner.

Resident witnesses:



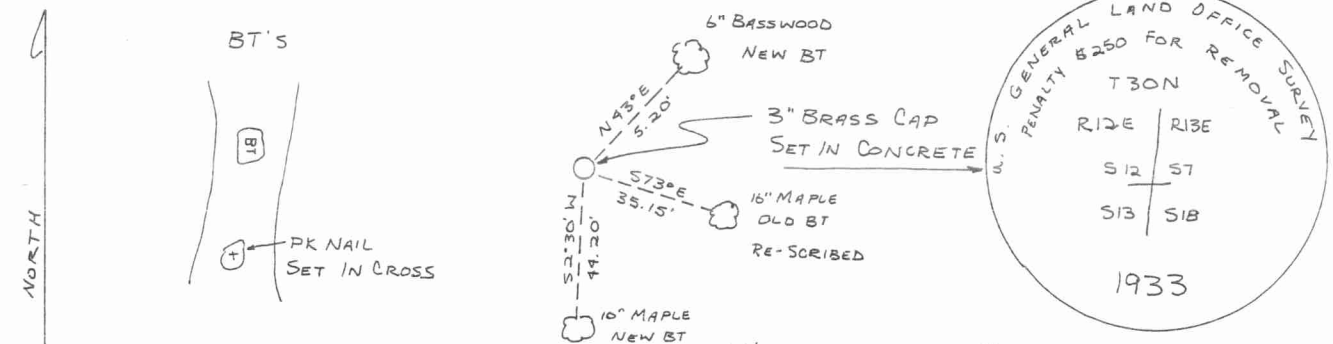
○ = Corner monument restored.

History of original corner establishment:
ORIGINAL CORNER ESTABLISHED BY
WILLIAM J. AERLY IN MAY, 1853.

Description of corner evidence found:
3" BRASS CAP MONUMENT,
FOUND IN PLACE.

ESTABLISHED NEW BEARING
TREES. RECOVERED OLD
SCRIBE MARKS ON OLD
BEARING TREE.

Description of monument and accessories I established to perpetuate the original location of this corner.



Dated at ELCHO, Wis., this 6th day of Nov., 1981

Signature William F. Kelly Title COUNTY SURVEYOR Registration No. 1098
 (County Surveyor, Registered Land Surveyor, or other duly authorized official)

Office of Register of Deeds, County of , I hereby certify that the within instrument was filed in this office for record on the day of , 19 at o'clock M.

 (Register of Deeds)

By Deputy



William F. Kelly

FORM 985 H. C. MILLER CO., MILWAUKEE