

LANGLADE COUNTY U.S. PUBLIC LAND CORNER RESTORATION

The South Quarter corner of Section 10, T. 30 N., R. 12 E., Langlade County, WI.

43012100020

Corner was: (check all that apply)

- Restored through acceptance of an obliterated evidence location.
- Restored through acceptance of a found perpetuated location.
- Determined to be lost and re-established through proportionate methods.
- Show bearings and distances to PLSS corners used for proportioning, and show original distances).
- Restored/recovered/re-established in a location that differs from a previously established position.
- (Show difference in plan view below).
- Check here if additional information is shown on the reverse side of this form.

Describe record evidence, recovered physical evidence, occupational evidence, testimonial evidence and all other evidence considered in the recovery/restoration of the corner.

The original corner was established in 1854 by James Withrow. Original bearing trees: hemlock, 8", S26°E, 19 links and a hemlock, 12", N65°W, 22 links. In 1911, FB94-101, Hutchinson said "stake set by Dorr in rd, no BT's". Hutchinson had a distance on the N-S 1/4 line of Sec 10 as 77.93 ch (5143.4'). In 1979, Wesley Tradewell found a rr spike set a corner by Dynamic Eng. & Surveying. He accepted the RR spike as the corner and set 2 iron pipe with brass caps for reference monuments. On CSM 6-58, Dan Higginbotham shows the N-S 1/4 line distance in Section 10 as 5135.32'. 07/06/08 D. Tlusty. Found rr spike in rd and distance to SE reference monument works with what Tradewell had. I accept the rr spike as the previously established corner by Tradewell and add additional ties as shown below.

Physical description of the monument set:

I left the existing RR spike in place.

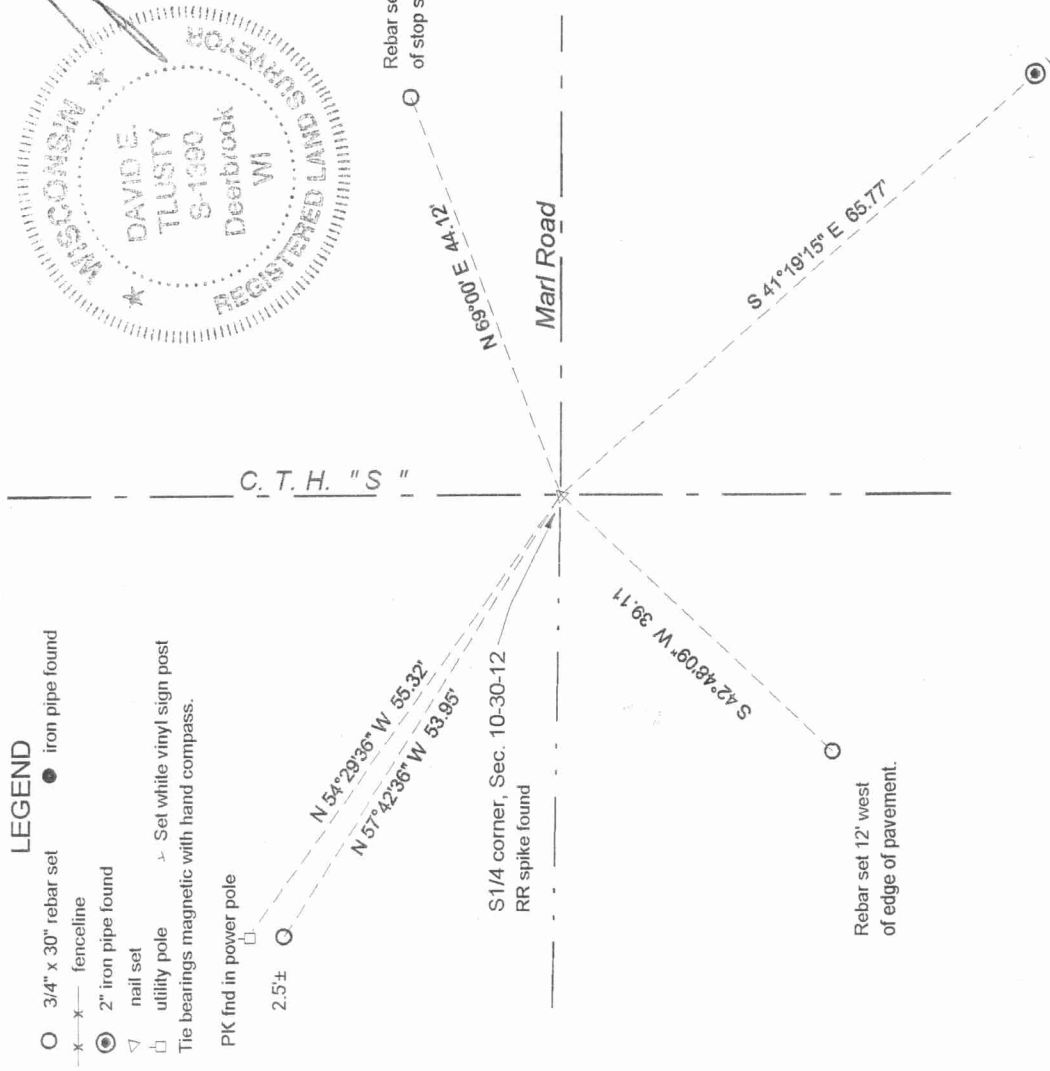
Describe the accessories used to perpetuate the corner. Include a plan view drawing and accessories found/set. Describe measuring point on bearing trees. Show any topographic features that would aid in future recovery of the corner.

LEGEND

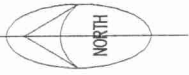
- 3/4" x 30" rebar set
- iron pipe found
- fenceline
- 2" iron pipe found
- nail set
- utility pole
- Set white vinyl sign post
- Tie bearings magnetic with hand compass.

PK fnd in power pole

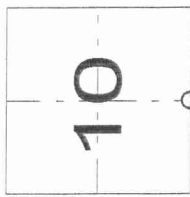
2.5±



Field book: FB11-52



Index No. J15 30-12



○ = corner perpetuated
The South quarter corner of Section 10, T. 30 N., R. 12 E., Langlade County, WI

I, David E. Tlusty, Registered Land Surveyor, as Langlade County Surveyor, certify that the corner location on this record was determined by me and that this U.S. Public Land Survey Monument Record is correct to the best of my knowledge and belief.