

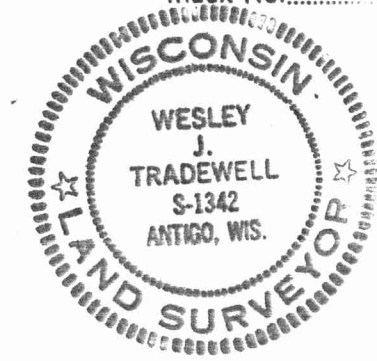
CERTIFIED LAND CORNER RESTORATION

Index No. J-15

43012100020

State of Wisconsin }  
 County of Langlade } ss.

History of original corner establishment:



I Wesley J. Tradewell, do hereby certify that on the 2nd day of August, 1979, I found evidence of the North 1/4 corner of Section 15 Township 30, North, Range 12 East, Fourth Principal Meridian, as described hereon; and that from this evidence I established a new monument and accessories as described hereon to perpetuate the original location of this corner.

Description of corner evidence found:

Found railroad spike set at corner by Dynamic Engineering and Surveying. Distance from spike to the S1/4 corner of Section 15 checks with distance shown on C.T.H. "S" R-O-W plat. Corner checks good with centerline of "S" and Marl Road.

Resident witnesses:

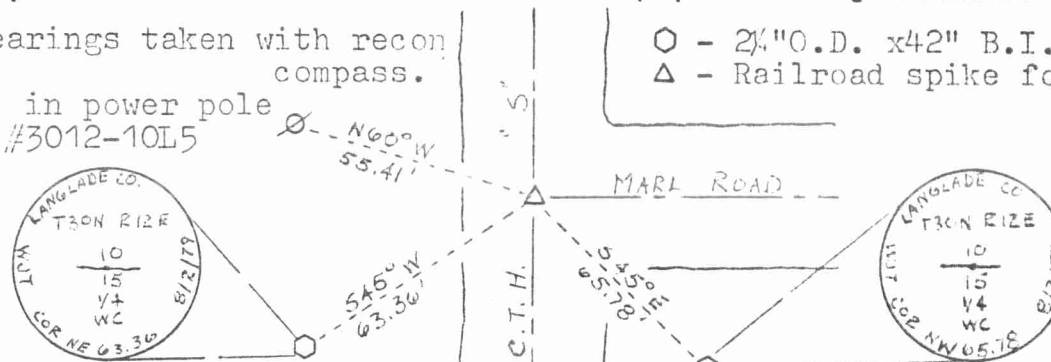
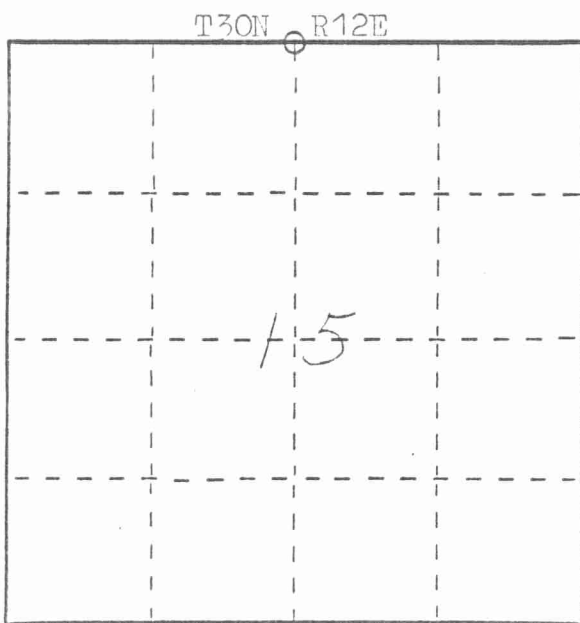
.....  
 .....  
 .....

Description of monument and accessories I established to perpetuate the original location of this corner.

Note: Bearings taken with recon compass.

P.K. in power pole  
 PP. #3012-10L5

○ - 2 1/2" O.D. x 42" B.I.P. w/Brass  
 △ - Railroad spike found



Dated at Antigo, Wis., this 9th day of August, 1979.

Signature Wesley J. Tradewell Title Registered Land Surveyor Registration No. 1377  
 (County Surveyor, Registered Land Surveyor, or other duly authorized official)

Office of Register of Deeds, County of....., I hereby certify that the within instrument was filed in this office for record on the..... day of....., 19..... at..... o'clock..... M.

.....  
 (Register of Deeds)

By..... Deputy

○ = Corner monument restored.

FORM 985 W. C. MILLER CO., MILWAUKEE