

4301209 000 2023

U.S. PUBLIC LAND SURVEY MONUMENT RECORD

HISTORY OF ORIGINAL CORNER ESTABLISHMENT AND SUBSEQUENT RESTORATION AND DESCRIPTION OF ANY RECORD, MONUMENT OCCUPATIONAL, TESTIMONIAL OR OTHER EVIDENCE CONSIDERED:

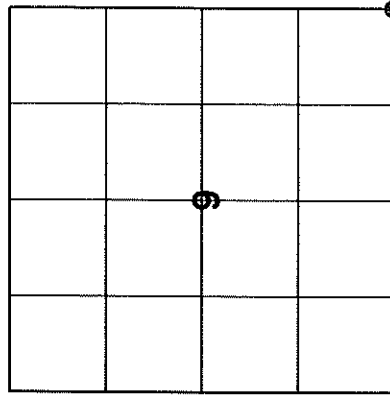
THE ORIGINAL CORNER WAS SET BY WITHROW IN 1853. THE ORIGINAL BEARING TREES WERE:
 15" MAPLE S78° 46" LINKS
 9 FIR N48°W 11.5 LINKS

1917 HUTCHINSON MEASURED THE SOUTH LINE OF THE SOUTHEAST 1/4 OF SECTION 9

1986 KELLY SET AN IRON PIPE AT THIS LOCATION

2023 I FOUND A 1" IRON PIPE 6" BELOW THE SURFACE IN THE LOGGING ROAD AND SET ADDITIONAL TIES.

● = LOCATION OF CORNER



SECTION 9
 TOWNSHIP 30 NORTH, RANGE 12 EAST
 TOWN OF NORWOOD
 LANGLADE COUNTY, WISCONSIN

CORNER WAS: (CHECK ALL THAT APPLY)

- RESTORED THROUGH ACCEPTANCE OF AN OBLITERATED EVIDENCE LOCATION
- RESTORED THROUGH ACCEPTANCE OF A FOUND PERPETUATED LOCATION
- CONSIDERED A LOST CORNER AND REESTABLISHED THROUGH LOST CORNER PROPORTIONATE METHODS (INCLUDE A PLAN VIEW DRAWING SHOWING DISTANCES AND DIRECTIONS TO OTHER PUBLIC LAND SURVEY CORNERS USED FOR PROPORTIONING AND DETERMINING THE CORNER LOCATION)
- RESTORED OR REESTABLISHED IN A LOCATION THAT DIFFERS FROM A PREVIOUS RESTORATION OR REESTABLISHMENT (INCLUDE A PLAN VIEW DRAWING AND INDICATE WHAT WAS SET AND/OR FOUND)
- CHECK IF THERE IS ADDITIONAL INFORMATION ON BACK

DESCRIBE THE MONUMENT AND ACCESSORIES USED TO PERPETUATE THE LOCATION OF THE CORNER. (INCLUDE A PLAN VIEW DRAWING AND INDICATE WHAT WAS SET AND/OR FOUND) ALSO INCLUDE FOUR TIES TO THE SECTION CORNER AND DESCRIPTION OF THE TIES.

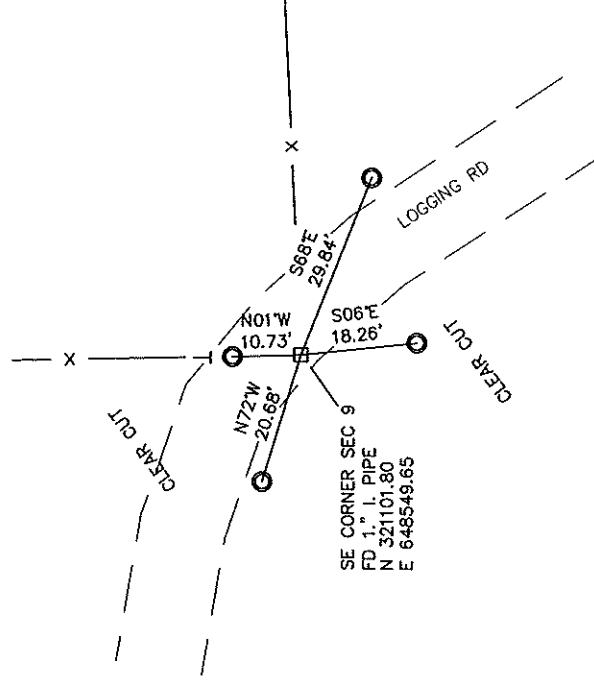
○ SET 3/4" X 30" RE-BAR WEIGHING 1.50 LBS/FT

◎ FD 1" I. PIPE

● FD WITNESS MONUMENT

BEARINGS REFERENCED TO THE LANGLADE COUNTY COORDINATE SYSTEM

T SET 6 FOOT WHITE T-POST



CHARLEY G. BRINKMEIER

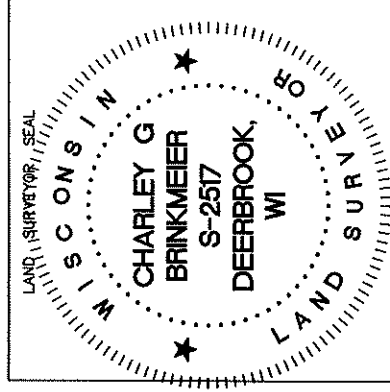
(Type or print name) CERTIFY THAT THE CORNER LOCATION SHOWN ON THIS RECORD WAS DETERMINED BY ME OR UNDER MY DIRECTION AND CONTROL AND THAT THIS U.S. PUBLIC LAND SURVEY MONUMENT RECORD IS CORRECT AND COMPLETE TO THE BEST OF MY KNOWLEDGE AND BELIEF.

[Handwritten Signature]

SIGNATURE

OCT 20 2023

DATE



J13 30-12

INDEX NO.

4301209000

U. S. PUBLIC LAND SURVEY MONUMENT RECORD

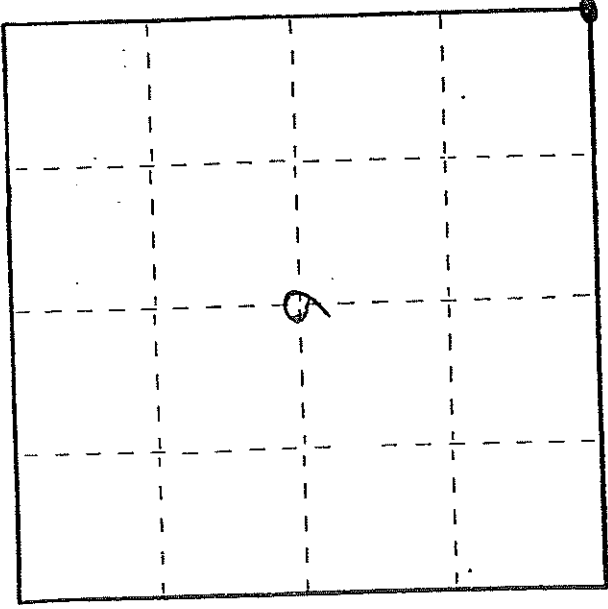
INSTRUCTIONS:

This record shall show the location of the corner and shall include all of the following nine elements (a through i).

- (a) Identify the corner by reference to the U.S. public land survey system.
- O = Corner monument restored.

CORNER ESTABLISHED ON ORIGINAL SURVEY BY JAMES WITHROW IN SEPT 1854

CORNER PERPETUATED BY M. HUTCHINSON IN 1912

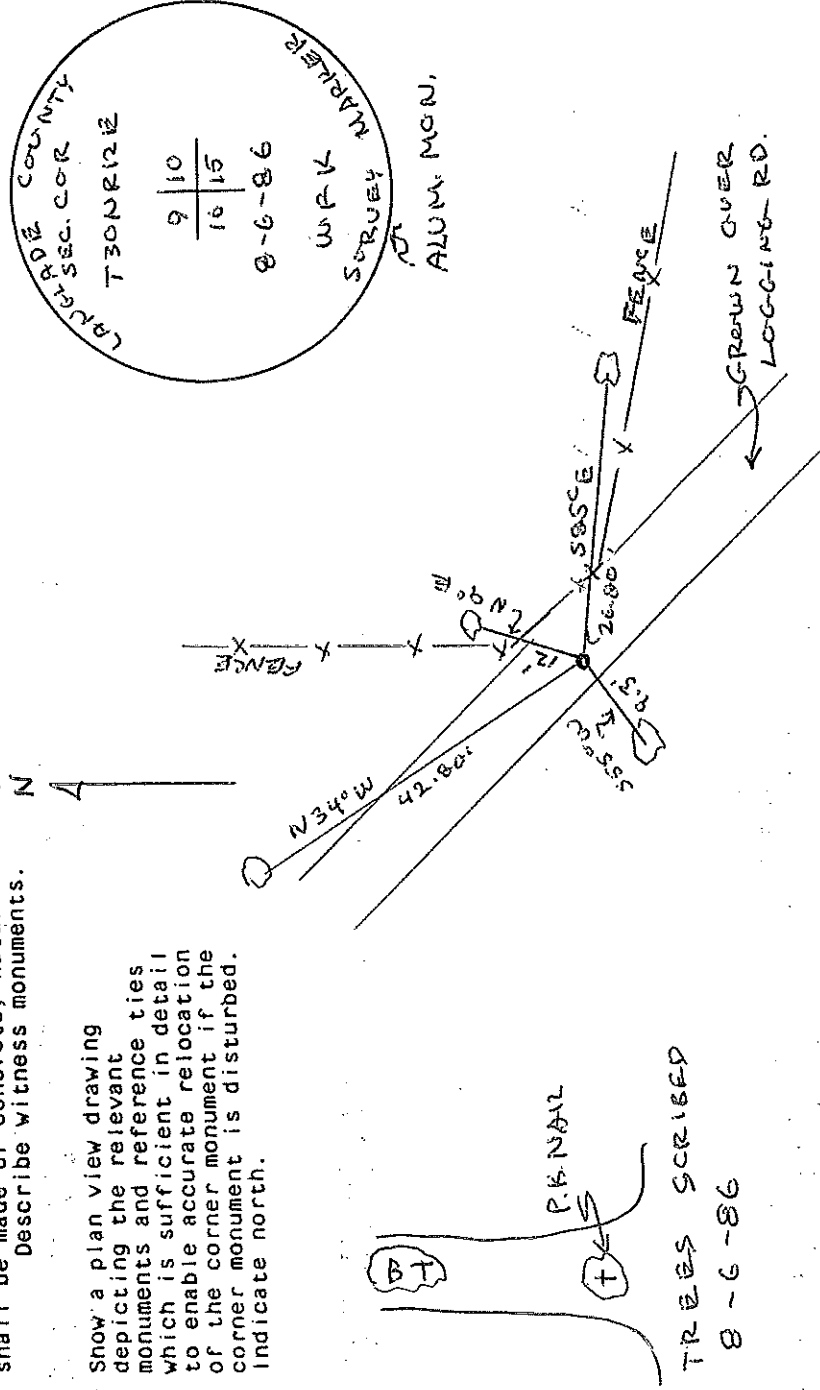


T30NR12E
NORWOOD

- (b) Describe any record evidence, monument evidence, occupational evidence, testimonial evidence, or any other material evidence you considered, and whether the monument was found or placed.

CORNER RE SET FROM SECT 16 SURVEY IN 1986. CORNER FALLS IN CENTER OF GROWN OVER LOGGING ROAD

- (c) In the plan view drawing below, provide reference ties to at least 4 witness monuments, or, if the location is within a municipality, to at least 2 witness monuments. (Witness monuments shall be made of concrete, natural stone, iron or other equally durable material.) Describe witness monuments.



8-6-86

(e) Describe any material discrepancy between the location of the corner as restored or reestablished and the location of that corner as previously restored or reestablished by distance and direction. Show the discrepancy on the plan view drawing under (d), above. Show the distances between the corner as previously restored or reestablished and (1) the corner as restored or reestablished, and (2) to at least 2 of the witness monuments shown on the drawing in (d), above.

(NONE)

43012090000

(f) Was the corner restored through acceptance of (1) an obliterated evidence location, or, (2) a found perpetuated location?

(2)

(g&h) Was the corner reestablished through lost corner proportionate methods? If so, show the method, including the directions and distances to other public land survey corners used as evidence or used for proportioning in determining the corner location?

PERPETUATED LOCATION

(1) I, WILLIAM F. KELLY
(type or print name) certify that the corner location shown on this record was determined by me or under my direction and control and that this U.S. Public Land Survey Monument Record is correct and complete to the best of my knowledge and belief.

William F. Kelly 12-9-86
Signature Date

