

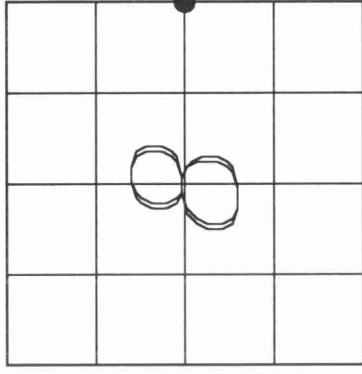
U.S. PUBLIC LAND SURVEY MONUMENT RECORD

430/2082000

HISTORY OF ORIGINAL CORNER ESTABLISHMENT AND SUBSEQUENT RESTORATION AND DESCRIPTION OF ANY RECORD, MONUMENT OCCUPATIONAL, TESTIMONIAL OR OTHER EVIDENCE CONSIDERED:

The original corner was established in 1854 by James Withrow. Original Bearing Trees: Maple 16" N54W 16lks., Fir 9" S19E 23lks. Weby, the County Surveyor in 1919 says he set a "blue stone, 14-24 + on top" at the E1/4. On 4/5/00, Charley Brinkmeier and Gerry Bahar located the center line of Crestwood Rd at an extension of an East-West fence. This location fit within 1 foot of an extension of a line running from a Gear Headed Spike set at the West 1/4 Corner through a 1" pipe found at the Center of Sec 8. We accepted this location and set a 4 1/2" Gear Headed Spike and tied out.

● = LOCATION OF CORNER

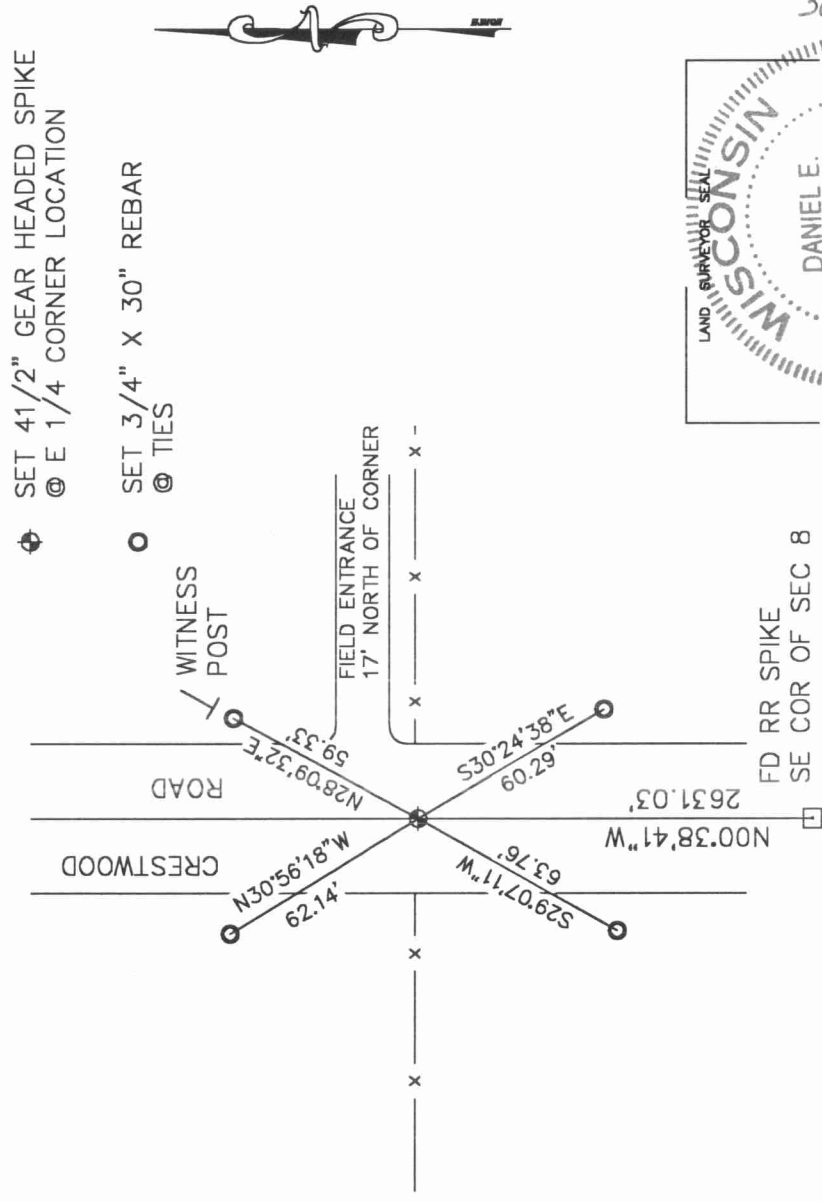


SECTION 8
 TOWNSHIP 30 NORTH, RANGE 12 EAST
 TOWN OF NORWOOD
 LANGLADE COUNTY, WISCONSIN

CORNER WAS: (CHECK ALL THAT APPLY)

- RESTORED THROUGH ACCEPTANCE OF AN OBLITERATED EVIDENCE LOCATION
- RESTORED THROUGH ACCEPTANCE OF A FOUND PERPETUATED LOCATION
- CONSIDERED A LOST CORNER AND REESTABLISHED THROUGH LOST CORNER PROPORTIONATE METHODS (INCLUDE A PLAN VIEW DRAWING SHOWING DISTANCES AND DIRECTIONS TO OTHER PUBLIC LAND SURVEY CORNERS USED FOR PROPORTIONING AND DETERMINING THE CORNER LOCATION)
- RESTORED OR REESTABLISHED IN A LOCATION THAT DIFFERS FROM A PREVIOUS RESTORATION OR REESTABLISHMENT (INCLUDE A PLAN VIEW DRAWING AND INDICATE WHAT WAS SET AND/OR FOUND)
- CHECK IF THERE IS ADDITIONAL INFORMATION ON BACK

DESCRIBE THE MONUMENT AND ACCESSORIES USED TO PERPETUATE THE LOCATION OF THE CORNER. (INCLUDE A PLAN VIEW DRAWING AND INDICATE WHAT WAS SET AND/OR FOUND) ALSO INCLUDE FOUR TIES TO THE SECTION CORNER AND DESCRIPTION OF THE TIES.



- ⊕ SET 4 1/2" GEAR HEADED SPIKE
@ E 1/4 CORNER LOCATION
- SET 3/4" X 30" REBAR
@ TIES

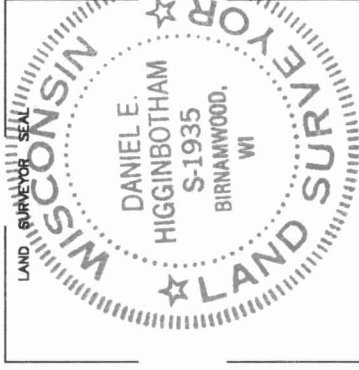
DANIEL E. HIGGINBOTHAM

(Type or print name) CERTIFY THAT THE CORNER LOCATION SHOWN ON THIS RECORD WAS DETERMINED BY ME OR UNDER MY DIRECTION AND CONTROL, AND THAT THIS U.S. PUBLIC LAND SURVEY MONUMENT RECORD IS CORRECT AND COMPLETE TO THE BEST OF MY KNOWLEDGE AND BELIEF.

Dan Higginbotham
 SIGNATURE

5/23/00
 DATE

G9
 3012



INDEX NO.