

43012073030

FORM 985 H. C. MILLER CO., MILWAUKEE

CERTIFIED LAND CORNER RESTORATION

Index No. F-2

State of Wisconsin }
County of LANGLADE } ss.

History of original corner establishment:

SET CORNER AT INTERSECTION OF NORTH - SOUTH AND EAST - WEST 1/16 LINES (NW 1/4).

I WESLEY J. TRADEWELL, do hereby certify that on the 16TH day of MAY, 1979, I found evidence of the NORTH WEST corner of SE 1/4, NW 1/4, SECTION 7 Township 30, North, Range 12 EAST, Fourth Principal Meridian, as described hereon; and that from this evidence I established a new monument and accessories as described hereon to perpetuate the original location of this corner.

Description of corner evidence found:

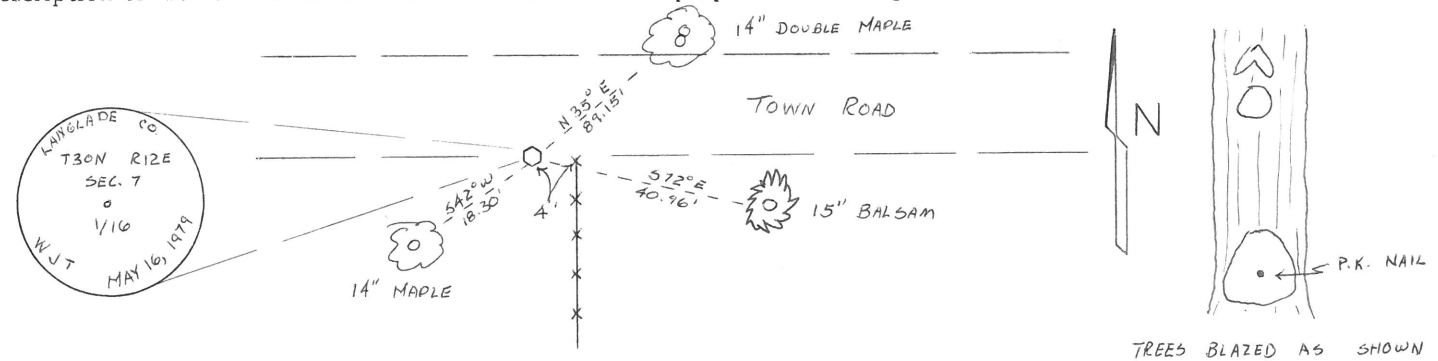
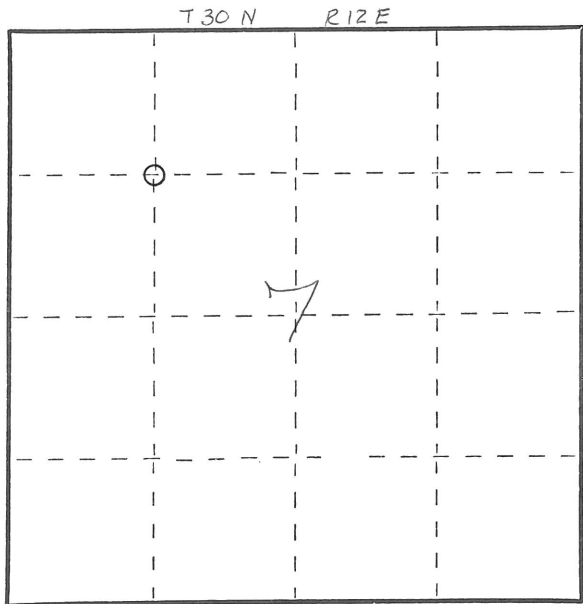
FOUND NO RECORD OF CORNER BEING PREVIOUSLY SET.

Resident witnesses:

.....
.....
.....



Description of monument and accessories I established to perpetuate the original location of this corner.



Dated at ANTIGO, Wis., this 21ST day of MAY, 1979.

Signature Wesley J. Tradewell Title REGISTERED LAND SURVEYOR Registration No. 1342
(County Surveyor, Registered Land Surveyor, or other duly authorized official)

Office of Register of Deeds, County of....., I hereby certify that the within instrument was filed in this office for record on the.....day of....., 19..... at.....o'clock..... M.

(Register of Deeds)

By.....Deputy

○ = Corner monument restored.