

43012073020

FORM 985 M. C. MILLER CO., MILWAUKEE

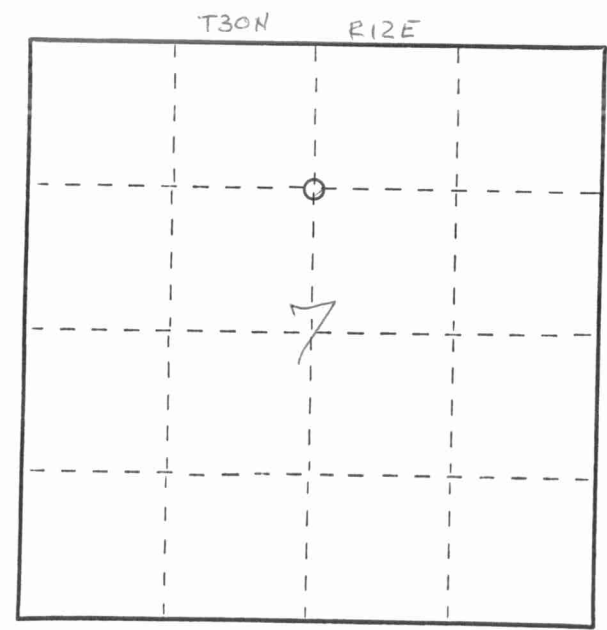
CERTIFIED LAND CORNER RESTORATION

Index No. F-3

State of Wisconsin }
County of LANGLADE } ss.

I WESLEY J. TRADEWELL, do hereby certify that on the 17TH day of MAY, 1979, I found evidence of the NORTHEAST corner of SE 1/4, NW 1/4, SEC. 7, Township 30, North, Range 12 EAST, Fourth Principal Meridian, as described hereon; and that from this evidence I established a new monument and accessories as described hereon to perpetuate the original location of this corner.

Resident witnesses:
.....
.....
.....



○ = Corner monument restored.

History of original corner establishment:

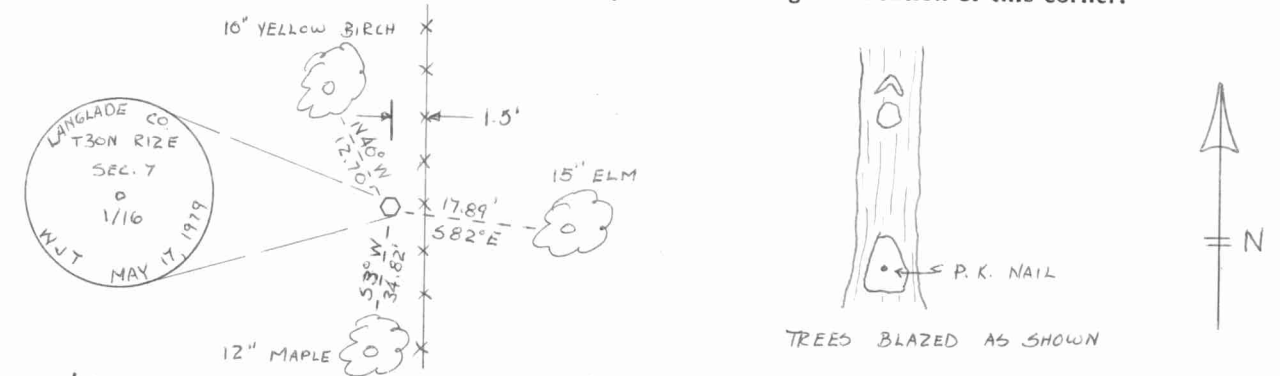
SET 2" x 42" BLACK IRON PIPE WITH BRASS CAP ON LINE AND EQUIDISTANT BETWEEN THE N 1/4 CORNER AND THE CENTER OF SECTION 7.

Description of corner evidence found:

FOUND NO RECORD OR EVIDENCE OF CORNER BEING PREVIOUSLY SET.



Description of monument and accessories I established to perpetuate the original location of this corner.



Dated at ANTIGO, Wis., this 21ST day of MAY, 1979.

Signature Wesley J. Tradewell Title REGISTERED LAND SURVEYOR Registration No. 1342
(County Surveyor, Registered Land Surveyor, or other duly authorized official)

Office of Register of Deeds, County of....., I hereby certify that the within instrument was filed in this office for record on the..... day of....., 19..... at..... o'clock..... M.

.....
(Register of Deeds)

By..... Deputy