

CERTIFIED LAND CORNER RESTORATION

Index No. G-2

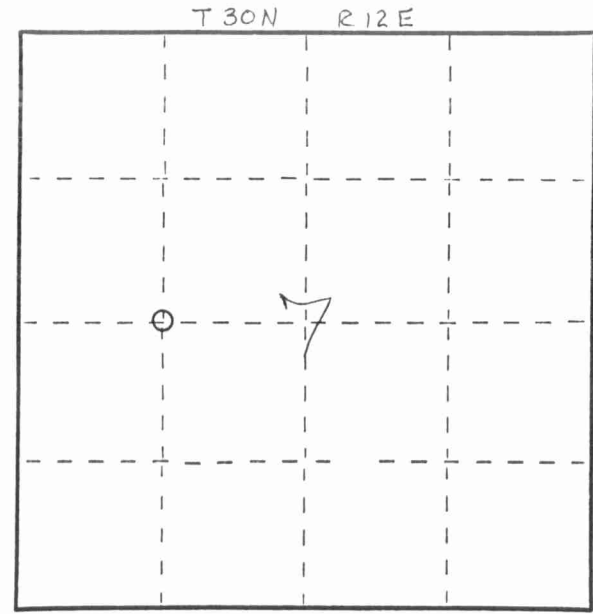
43012072030

State of Wisconsin }  
 County of LANGLADE } ss.

I, WESLEY J. TRADEWELL, do hereby certify that on the 16<sup>TH</sup> day of MAY, 1979, I found evidence of the SOUTH WEST corner of SE 1/4, NW 1/4, SEC. 7 Township 30, North, Range 12 EAST, Fourth Principal Meridian, as described hereon; and that from this evidence I established a new monument and accessories as described hereon to perpetuate the original location of this corner.

Resident witnesses:  
 \_\_\_\_\_  
 \_\_\_\_\_  
 \_\_\_\_\_

FORM 985 M. C. MILLER CO., MILWAUKEE



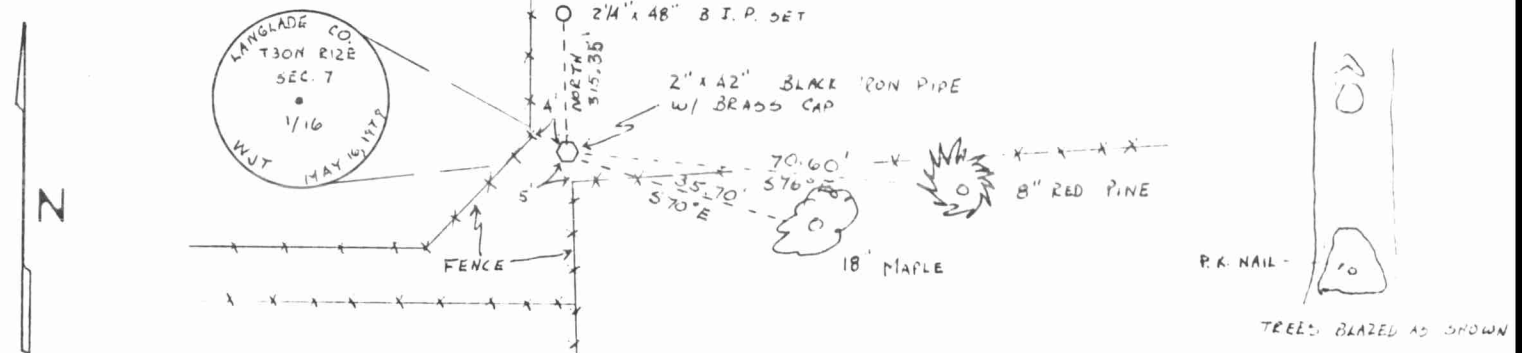
○ = Corner monument restored.

History of original corner establishment:  
SET CORNER BY PROPORTION BETWEEN CENTER OF SECTION 7 AND WEST 1/4 CORNER.

Description of corner evidence found:  
NO RECORD OF CORNER BEING PREVIOUSLY SET.



Description of monument and accessories I established to perpetuate the original location of this corner.



Dated at ANTIGO, Wis., this 21<sup>ST</sup> day of MAY, 1979.

Signature Wesley J. Tradewell Title REGISTERED LAND SURVEYOR Registration No. 1342  
 (County Surveyor, Registered Land Surveyor, or other duly authorized official)

Office of Register of Deeds, County of \_\_\_\_\_, I hereby certify that the within instrument was filed in this office for record on the \_\_\_\_\_ day of \_\_\_\_\_, 19\_\_\_\_ at \_\_\_\_\_ o'clock \_\_\_\_\_ M.

(Register of Deeds)

By \_\_\_\_\_ Deputy