

4301205 9020

# U.S. PUBLIC LAND SURVEY MONUMENT RECORD

(Prepared and as required by S. A-E 7.08 WI Administrative Code)

The NORTH 1/4 corner of Section 5, T. 30 N., R. 12 E., Langlade County, WI  
Corner was (check all that apply)

- Restored through acceptance of an obliterated evidence location.
- Restored through acceptance of a found perpetuated location.
- Determined to be lost and re-established through proportionate methods. (show bearings and distances to PLSS corners used for proportioning.)
- Restored/recovered/re-established in a location that differs from a previously established position. (Show difference in plan view below.)
- Check here if additional information is shown on the reverse side of this form.

**Describe record evidence, recovered physical evidence, occupational evidence, testimonial evidence, and all other evidence considered in the recovery/restoration of the corner.**

This corner was not set as part of the original GLO survey.

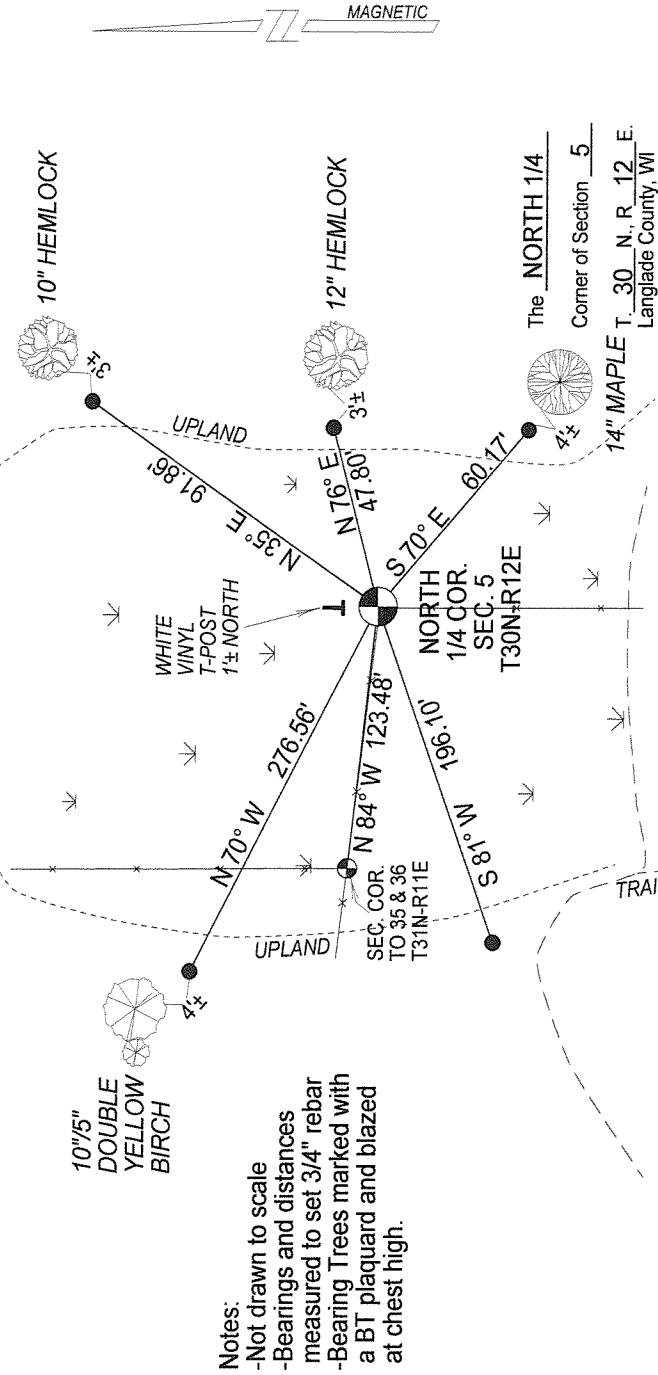
1920 - Hutchinson, working in Section 5, worked from the NE corner to the west at 40.07 chs., and intersected "62 links north of 1/4 post".

2013 - Surveying in Section 5, I found an existing 2" Iron pipe with a Langlade County brass cap at the Corner location. (The cap does not indicate when it was set, or by whom. There was no tie sheet on file with Langlade County). Corner falls at the existing intersection of fences from the south and the west.

### Physical description of the monument set:

I accept the brass capped iron pipe as corner location, and tied it out as follows.

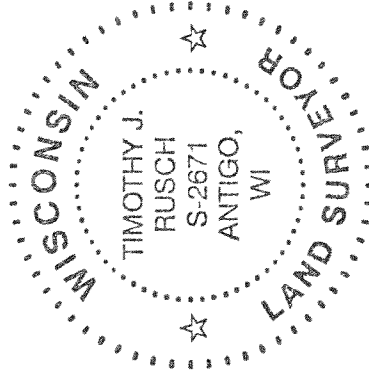
Describe the accessories used to perpetuate the location of the corner. Include a plan view drawing and indicate accessories found/set. Describe measuring point on bearing trees. Show any topographic features that would aid in future recovery of the corner.



### Notes:

- Not drawn to scale
- Bearings and distances measured to set 3/4" rebar
- Bearing Trees marked with a BT placard and blazed at chest high.

SURVEYOR'S SEAL



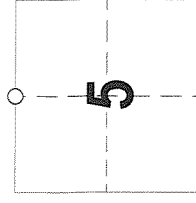
I, Timothy J. Rusch certify that the

corner location shown on this record was determined by me or under my direction and control and that this U.S. Public Land Survey Monument Record is correct and complete to the best of my knowledge and belief.

Timothy J. Rusch 05-24-2013 Date

Signature

INDEX No. A-7 (30-12)



○ = Location of corner