

4301205 9000 2023

# U.S. PUBLIC LAND SURVEY MONUMENT RECORD

HISTORY OF ORIGINAL CORNER ESTABLISHMENT AND SUBSEQUENT RESTORATION AND DESCRIPTION OF ANY RECORD, MONUMENT OCCUPATIONAL, TESTIMONIAL OR OTHER EVIDENCE CONSIDERED:

THE ORIGINAL CORNER WAS SET BY WITHROW IN 1853. THE ORIGINAL BEARING TREES WERE:

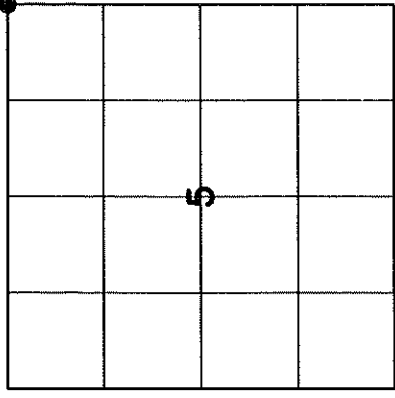
- 10" ELM S45°E 6 LINKS
- 15" ELM S12°E 10 LINKS
- 8" MAPLE S26°W 14 LINKS
- 7" MAPLE S51°W 32 LINKS

1920 HUTCHINSON MEASURED THE NORTH LINE OF THE NE 1/4 OF SECTION 5

1991 KRUEGER SET A RR SPIKE AT THE PROPORTIONATE DISTANCE

2023 I FOUND THE RR SPIKE AND SET ADDITIONAL TIES

● = LOCATION OF CORNER



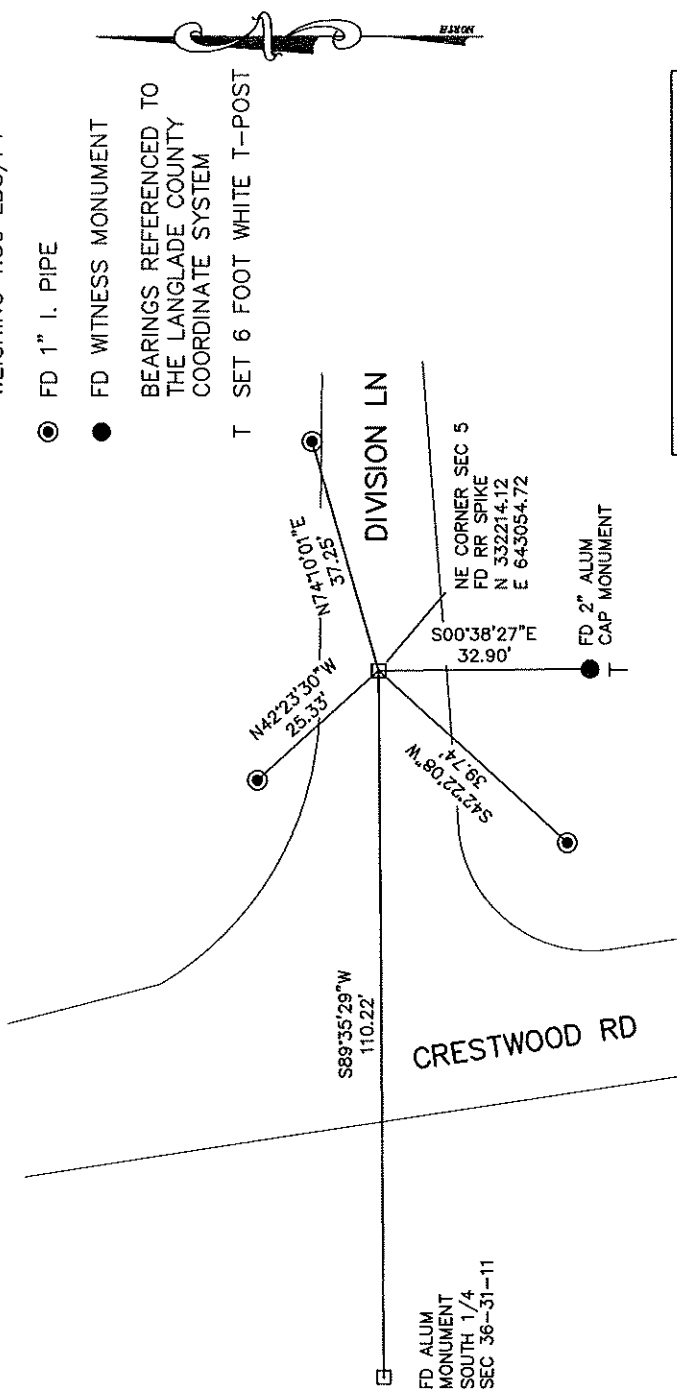
SECTION 5  
 TOWNSHIP 30 NORTH, RANGE 12 EAST  
 TOWN OF NORWOOD  
LANGLADE COUNTY, WISCONSIN

CORNER WAS: (CHECK ALL THAT APPLY)

- RESTORED THROUGH ACCEPTANCE OF AN OBLITERATED EVIDENCE LOCATION
- RESTORED THROUGH ACCEPTANCE OF A FOUND PERPETUATED LOCATION
- CONSIDERED A LOST CORNER AND REESTABLISHED THROUGH LOST CORNER PROPORTIONATE METHODS (INCLUDE A PLAN VIEW DRAWING SHOWING DISTANCES AND DIRECTIONS TO OTHER PUBLIC LAND SURVEY CORNERS USED FOR PROPORTIONING AND DETERMINING THE CORNER LOCATION)
- RESTORED OR REESTABLISHED IN A LOCATION THAT DIFFERS FROM A PREVIOUS RESTORATION OR REESTABLISHMENT (INCLUDE A PLAN VIEW DRAWING AND INDICATE WHAT WAS SET AND/OR FOUND)
- CHECK IF THERE IS ADDITIONAL INFORMATION ON BACK

DESCRIBE THE MONUMENT AND ACCESSORIES USED TO PERPETUATE THE LOCATION OF THE CORNER. (INCLUDE A PLAN VIEW DRAWING AND INDICATE WHAT WAS SET AND/OR FOUND) ALSO INCLUDE FOUR TIES TO THE SECTION CORNER AND DESCRIPTION OF THE TIES.

- SET 3/4" X 30" RE-BAR WEIGHING 1.50 LBS/FT
  - FD 1" I. PIPE
  - FD WITNESS MONUMENT
- BEARINGS REFERENCED TO THE LANGLADE COUNTY COORDINATE SYSTEM
- T SET 6 FOOT WHITE T-POST



FD ALUM MONUMENT SOUTH 1/4 SEC 36-31-11

CRESTWOOD RD

DIVISION LN

NE CORNER SEC 5  
 FD RR SPIKE  
 N 332214.12  
 E 643054.72

FD 2" ALUM CAP MONUMENT

CHARLEY G. BRINKMEIER

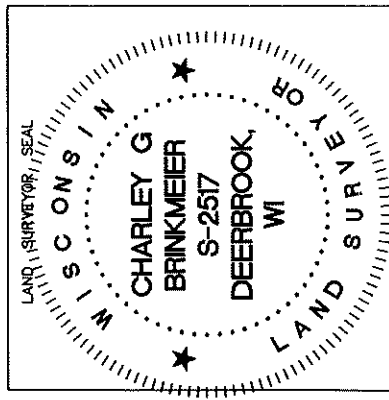
(Type or Print Name) CERTIFY THAT THE CORNER LOCATION SHOWN ON THIS RECORD WAS DETERMINED BY ME OR UNDER MY DIRECTION AND CONTROL AND THAT THIS U.S. PUBLIC LAND SURVEY MONUMENT RECORD IS CORRECT AND COMPLETE TO THE BEST OF MY KNOWLEDGE AND BELIEF.

*[Handwritten Signature]*

SIGNATURE

OCT 20 2023

DATE



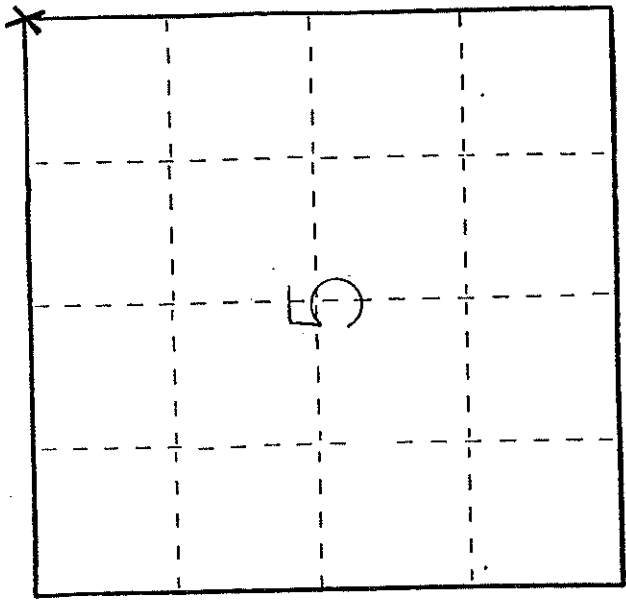
A-9 30-12 INDEX NO.

43012059000

# U. S. PUBLIC LAND SURVEY MONUMENT RECORD

**I N S T R U C T I O N S :** This record shall show the location of the corner and shall include all of the following nine elements (a through i).

- (a) Identify the corner by reference to the U.S. public land survey system.
- = Corner monument restored.



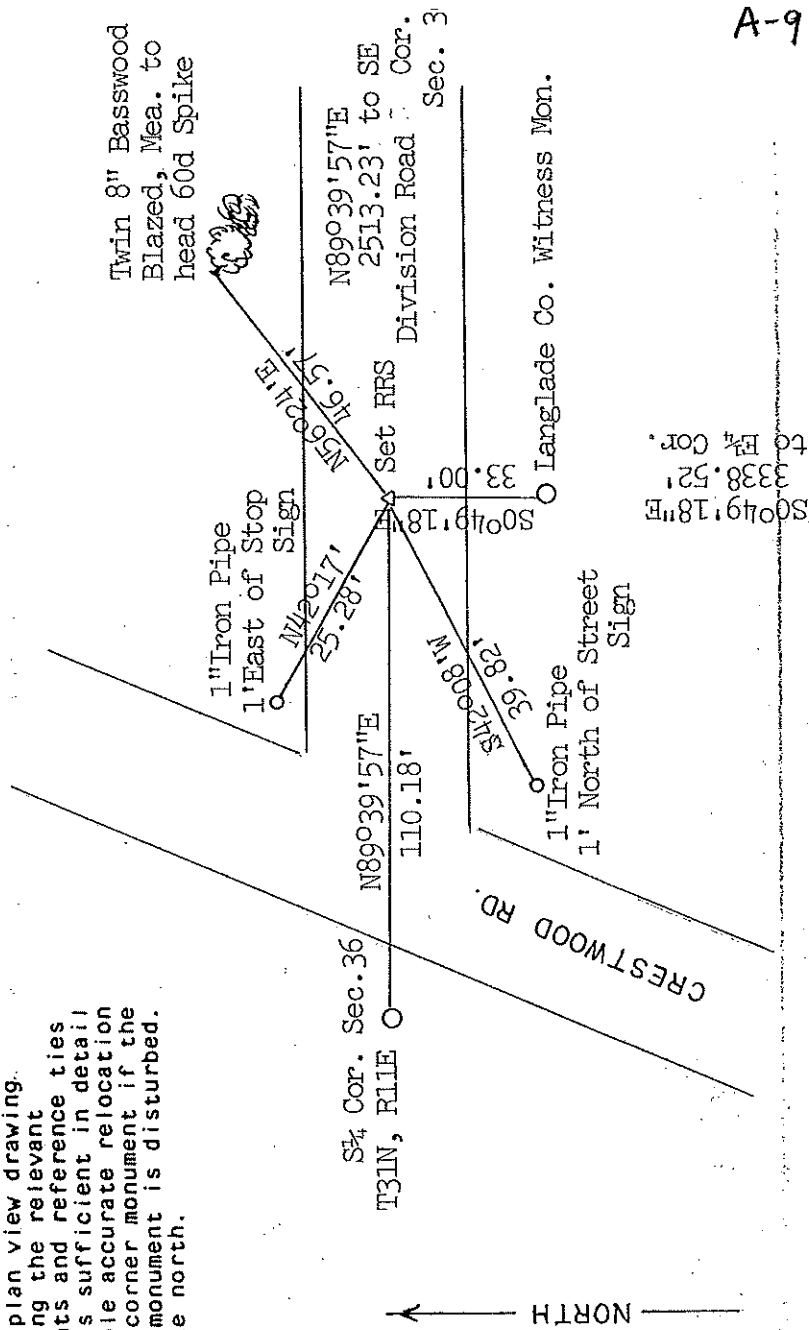
Northeast Corner of Section 5,  
 Township 30 North, Range 12 East,  
 Town of Norwood, Langlade County,  
 Wisconsin.

- (b) Describe any record evidence, monument evidence, occupational evidence, testimonial evidence or any other material evidence you considered, and whether the monument was found or placed.

Searched area with metal detector and found nothing. Determined corners location by traversing from the South 1/4 corner of Section 36-31-11 to the Southeast corner of Section 36-31-11. Set corner on a Straight line between the two corners at a proportionate distance as per thr original notes.

- (c) In the plan view drawing below, provide reference ties to at least 4 witness monuments, or, if the location is within a municipality, to at least 2 witness monuments. (Witness monuments shall be made of concrete, natural stone, iron or other equally durable material.) Describe witness monuments.

- (d) Show a plan view drawing depicting the relevant monuments and reference ties which is sufficient in detail to enable accurate relocation of the corner monument if the corner monument is disturbed. Indicate north.



50°49'18\"E  
 3338.52'  
 to E1/4 Cor.

43012059000

(e) Describe any material discrepancy between the location of the corner as restored or reestablished and the location of that corner as previously restored or reestablished by distance and direction. Show the discrepancy on the plan view drawing under (d), above. Show the distances between the corner as previously restored or reestablished and (1) the corner as restored or reestablished, and (2) to at least 2 of the witness monuments shown on the drawing in (d), above.

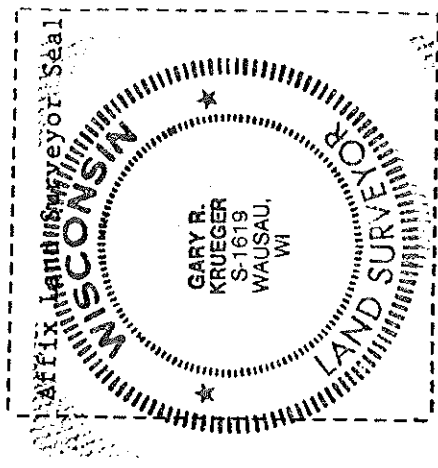
None

(f) Was the corner restored through acceptance of (1) an obliterated evidence location, or, (2) a found perpetuated location?

Obliterated Evidence

(g&h) Was the corner reestablished through lost corner proportionate methods? If so, show the method, including the directions and distances to other public land survey corners used as evidence or used for proportioning in determining the corner location?

See Plan View



(1) I, Gary R. Krueger, Registered Land Surveyor  
 (type or print name) certify that the corner location shown  
 on this record was determined by me or under my direction and  
 control and that this U.S. Public Land Survey Monument Record is  
 correct and complete to the best of my knowledge and belief.

Gary R. Krueger 5-17-91  
 Signature Date