

4301205 0020

U.S. PUBLIC LAND SURVEY MONUMENT RECORD

(Prepared and as required by S. A-E 7.08 WI Administrative Code)

The NORTH 1/4 corner of Section 8, T. 30 N., R. 12 E., Langlade County, WI
Corner was (check all that apply)

- Restored through acceptance of an obliterated evidence location.
- Restored through acceptance of a found perpetuated location.
- Determined to be lost and re-established through proportionate methods. (show bearings and distances to PLSS corners used for proportioning.)
- Restored/recovered/re-established in a location that differs from a previously established position. (Show difference in plan view below.)
- Check here if additional information is shown on the reverse side of this form.

Describe record evidence, recovered physical evidence, occupational evidence, testimonial evidence, and all other evidence considered in the recovery/restoration of the corner.

1865- Government Surveyor J. Withrow set corner in original survey.
BTs: 8" Basswood N61°W, 3 1/2 links; 8" Basswood, S45°E, 8 links.

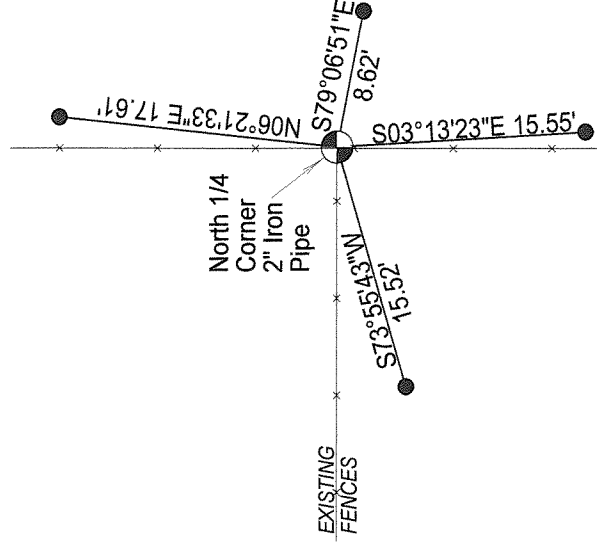
1919- County Surveyor Webley, surveyed Section 8, and at 79.72 chains from the South 1/4 corner, found "point of stake by side of fence post." Webley set a new cedar stake.

2011 - I found a 2" Iron pipe at the Corner location, with existing iron pipe ties of unknown origin. There was no tie sheet on file at Langlade County. Location matches well with existing N-S-W fences, and at 5254' from South 1/4 corner, matches Webley's distance (5262') well.

Physical description of the monument set:

I accept the 2" Iron pipe as corner location, and tied it out as follows.

Describe the accessories used to perpetuate the location of the corner. Include a plan view drawing and indicate accessories found/set. Describe measuring point on bearing trees. Show any topographic features that would aid in future recovery of the corner.

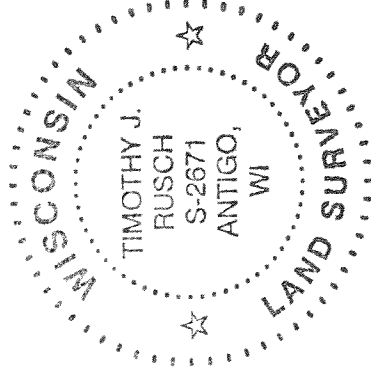


Notes:
-Not drawn to scale
-Ties are 1.5" o.d.
found iron pipes

BEARINGS REFERENCED TO THE LANGLADE COUNTY COORDINATE SYSTEM GRID.

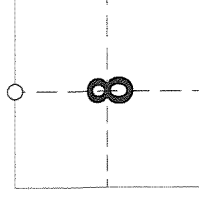
The NORTH 1/4
Corner of Section 8
T. 30 N., R. 12 E.
Langlade County, WI

SURVEYOR'S SEAL



I, Timothy J. Rusch, certify that the corner location shown on this record was determined by me or under my direction and control and that this U.S. Public Land Survey Monument Record is correct and complete to the best of my knowledge and belief.

Timothy J. Rusch 10-28-2011
Signature Date



○ = Location of corner

INDEX No. E-7 (30-12)