

NA 30-4

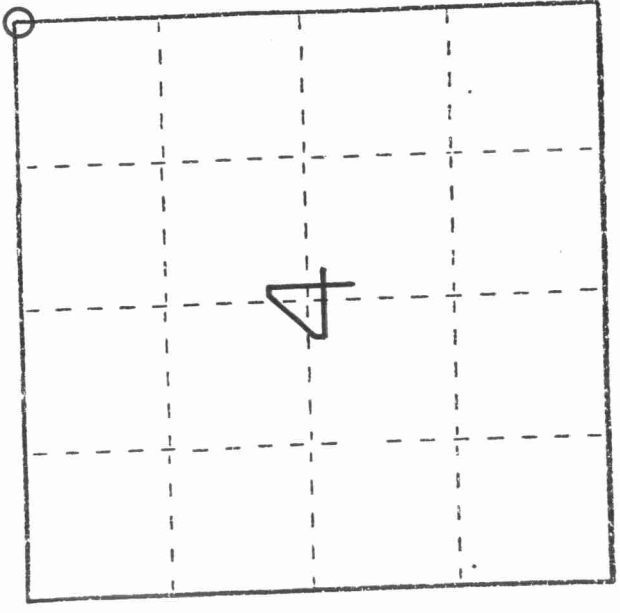
4 30 12 04 90 00

# U. S. PUBLIC LAND SURVEY MONUMENT RECORD

## INSTRUCTIONS:

This record shall show the location of the corner and shall include all of the following nine elements (a through i).

- (a) Identify the corner by reference to the U.S. public land survey system.
- = Corner monument restored.



NORTHEAST CORNER SECTION 4-30-12

(b) Describe any record evidence, monument evidence, occupational evidence, testimonial evidence or any other material evidence you considered, and whether the monument was found or placed.

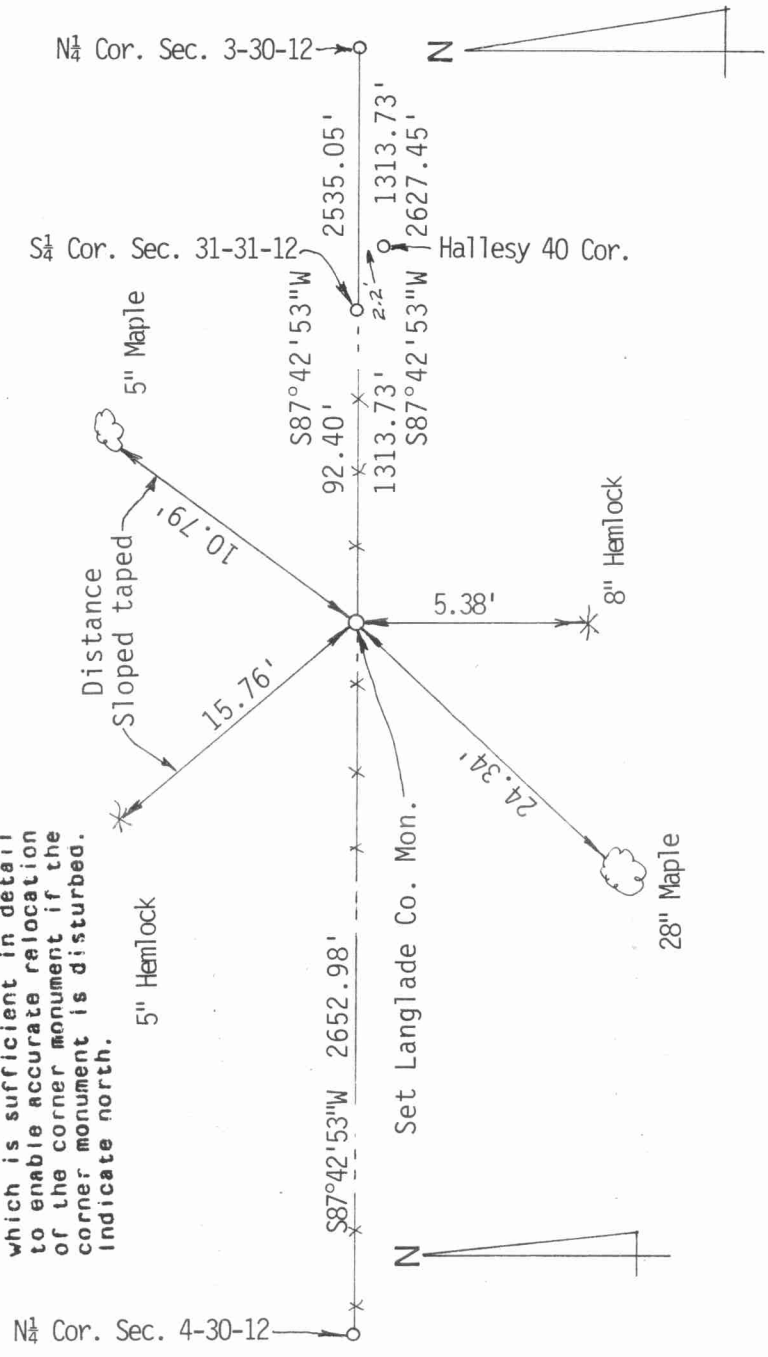
This corner was not on record. The only reference I found was to original Cedar Stake set by James Marsh in 1851. Traversed to area, found existing Langlade County Monument sticking 2' out of ground, leaning Northerly. There were 4 trees blazed around corner, and by growth on blazes, I would estimate the corner was set 5-10 years ago. There are no recorded, or unrecorded surveys tied to this corner. Removed corner from ground, dug new hole, deeper, and set on line from SW Cor. Sec. 31-31-12 to N $\frac{1}{4}$  Cor. Sec. 3-30-12. Set at doubled "40" distance from East, from 40 corner set by Hallsey. Put 60D nails in blazes, measured to head of nails. Due to steep bank corner is on, some tie distances (as shown) are slope taped. Painted ties and corner yellow.

Talked to Bill Kelly about this corner, he knew nothing about who set it, or why it wasnt on record.

(c) In the plan view drawing below, provide reference ties to at least 4 witness monuments, or, if the location is within a municipality, to at least 2 witness monuments. (Witness monuments shall be made of concrete, natural stone, iron or other equally durable material.) Describe witness monuments.

NOTE: All trees blazed with 60D Nail. Distance to head of nail.

(d) Show a plan view drawing depicting the relevant monuments and reference ties which is sufficient in detail to enable accurate relocation of the corner monument if the corner monument is disturbed. Indicate north.



~~L 2-3~~  
A 13

(e) Describe any material discrepancy between the location of the corner as restored or reestablished and the location of that corner as previously restored or reestablished by distance and direction. Show the discrepancy on the plan view drawing under (d), above. Show the distances between the corners as previously restored or reestablished and (1) the corner as restored or reestablished, and (2) to at least 2 of the witness monuments shown on the drawing in (d), above.

43012049000

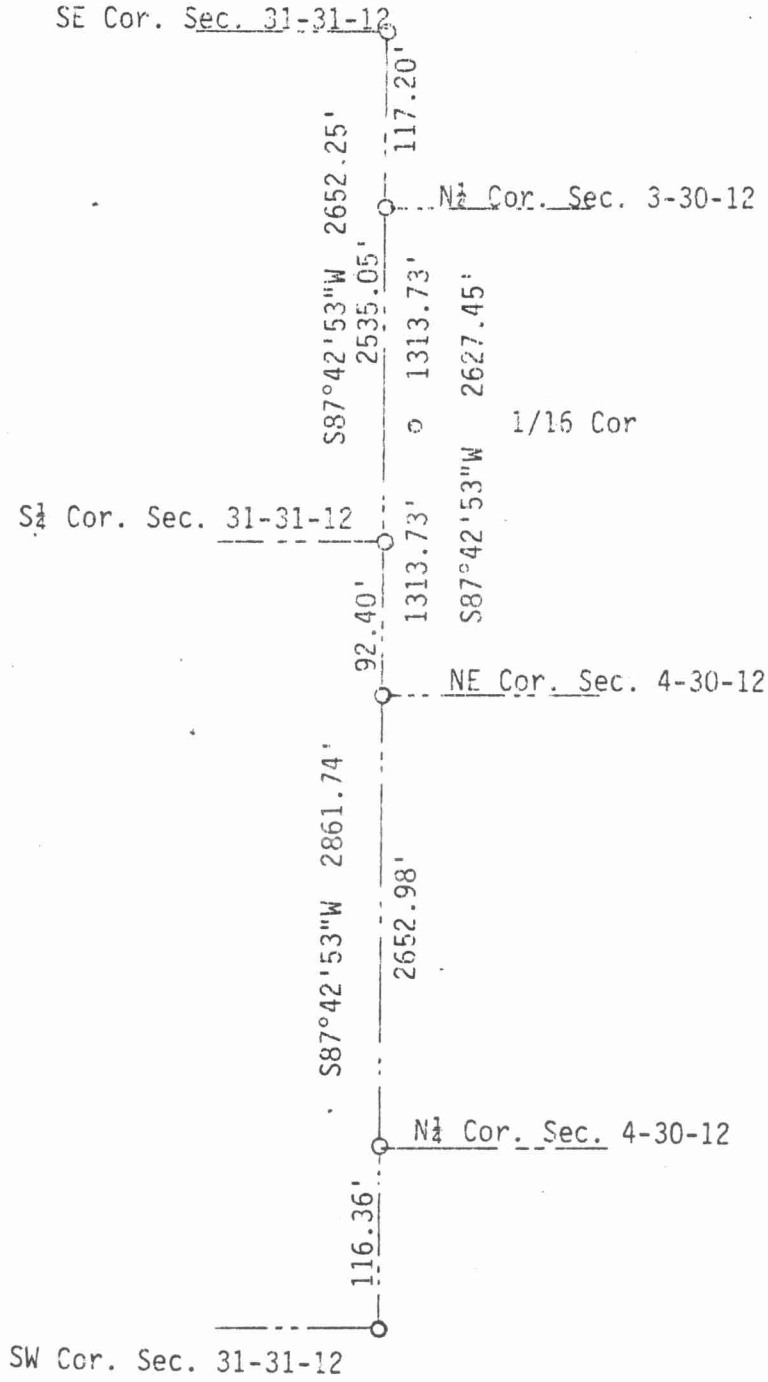
NONE, Existing Monument was leaning over on steep slope. Hard to determine where it was originally set. I moved it approximately 1.2 East, and 0.6 South.

(f) Was the corner restored through acceptance of (1) an obliterated evidence location, or, (2) a found perpetuated location?

From North 1/4 corner 3-30-12, measured to 40 corner set by Hallsey, doubled this distance, and set on straight line from N 1/4 Cor 3-30-12 to SW Cor. 31-31-12. This matched existing East-West fence line, and 1.4 chains West of fence line running North. (as per original notes)

(g&h) Was the corner reestablished through lost corner proportionate methods? If so, show the method, including the directions and distances to other public land survey corners used as evidence or used for proportioning in determining the corner location?

Since this is a Township line, held straight line between existing corners East & West. Matched all lines of occupation, distances looked very good.



(1) I, David L. Osterbrink RLS No. S-2014 (type or print name) certify that the corner location shown on this record was determined by me or under my direction and control and that this U.S. Public Land Survey Monument Record is correct and complete to the best of my knowledge and belief.

David L. Osterbrink 2-28-92  
Signature Date

