

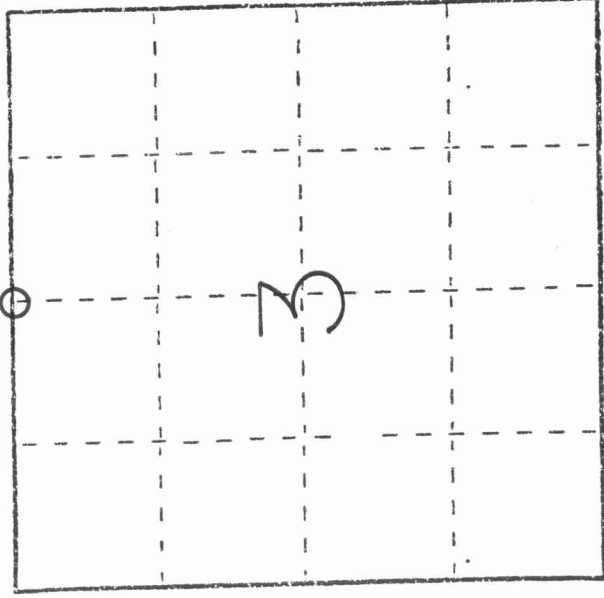
43012039020

U. S. PUBLIC LAND SURVEY MONUMENT RECORD

INSTRUCTIONS:

This record shall show the location of the corner and shall include all of the following nine elements (a through i).

- (a) Identify the corner by reference to the U.S. public land survey system.
- O = Corner monument restored.



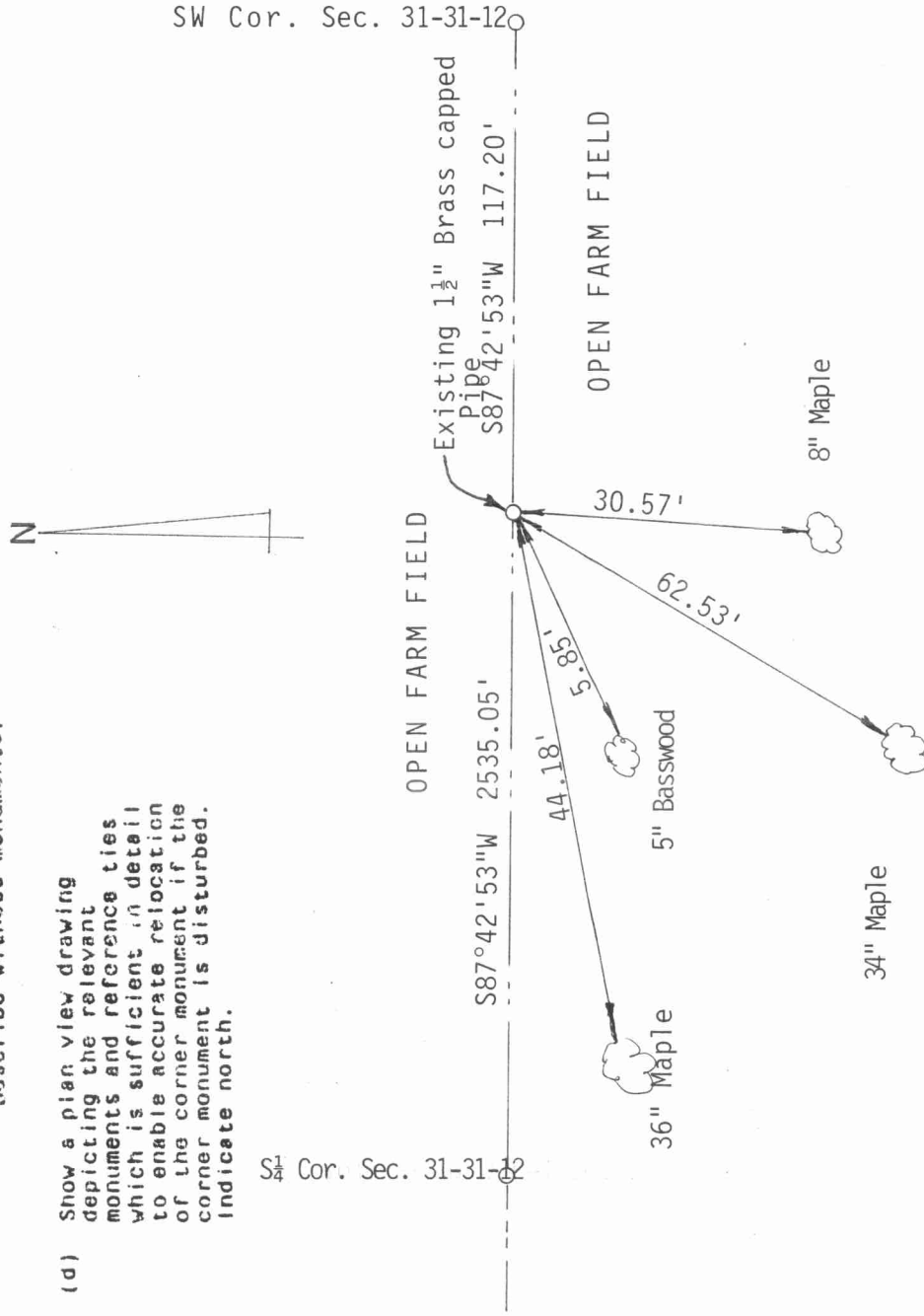
NORTH 1/4 CORNER SECTION 3 T30N, R12E

- (b) Describe any record evidence, monument evidence, occupational evidence, and whether the monument was found or placed. Describe any other material evidence you considered, and whether the monument was found or placed.

Found existing 1 1/2" Iron Pipe with brass cap at corner of woods. Fence running to the West. The pipe was painted red, just like iron pipes found West of here. Pipe fit distances and occupation lines to West very well. Obviously being held for lines of occupation. Held pipe as Section corner. Tied out, painted ties and corner yellow.

- (c) In the plan view drawing below, provide reference ties to at least 4 witness monuments, or, if the location is within a municipality, to at least 2 witness monuments. (Witness monuments shall be made of concrete, natural stone, iron or other equally durable material.) Describe witness monuments.

- (d) Show a plan view drawing depicting the relevant monuments and reference ties which is sufficient in detail to enable accurate relocation of the corner monument if the corner monument is disturbed. Indicate north.



~~Z 4-5~~
A 15

(6) Describe any material discrepancy between the location of the corner as restored or reestablished and the location of that corner as previously restored or reestablished by distance and direction. Show the discrepancy on the plan view drawing under (d). above. Show the distances between the corner as previously restored or reestablished and (1) the corner as restored or reestablished, and (2) to at least 2 of the witness monuments shown on the drawing in (d), above.

43012039020

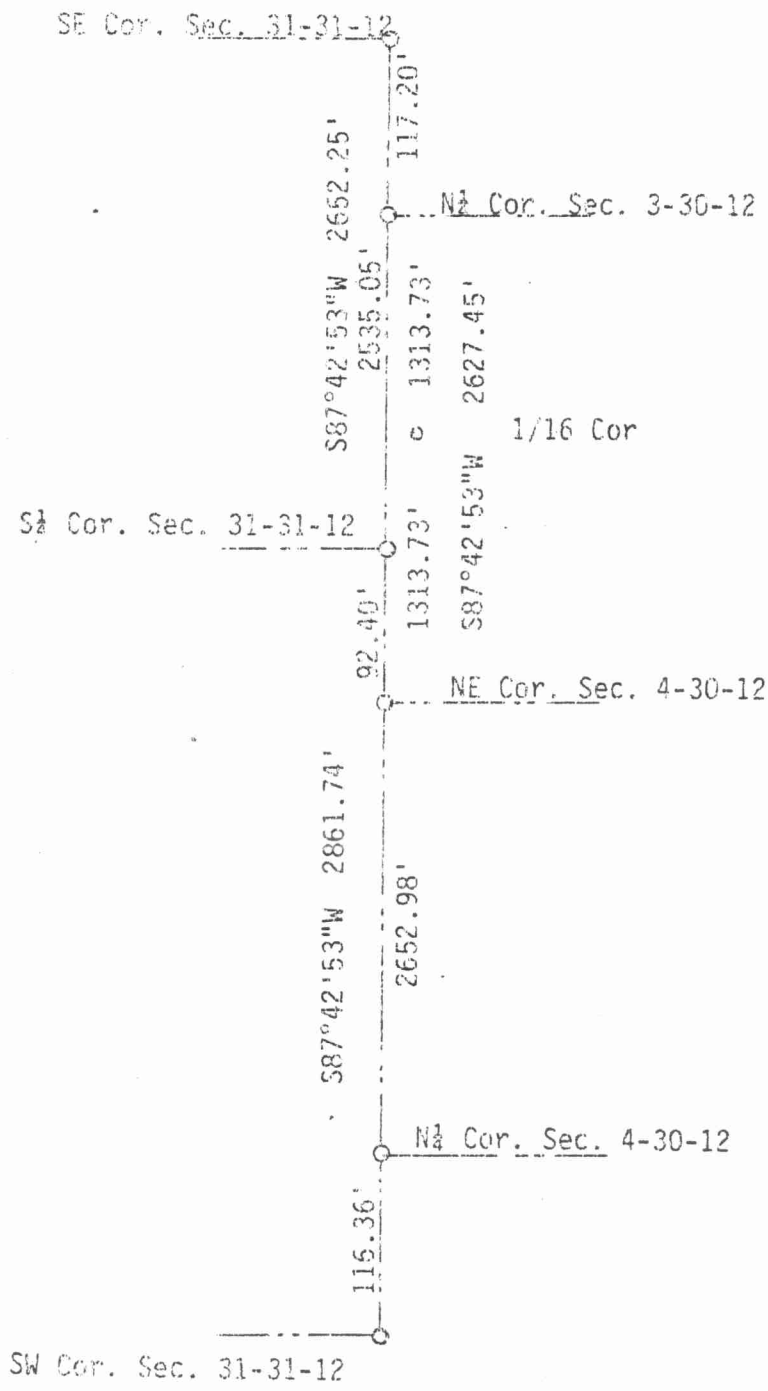
NONE

(7) Was the corner restored through acceptance of (1) an obliterated evidence location, or, (2) a found perpetuated location?

Existing Iron Pipe and brass cap are same as other corners in area. Is used as local property corner. Dimensions check and match fence lines to West and North.

(8)(i) Was the corner reestablished through lost corner proportionate methods? If so, show the method, including the directions and distances to other public land survey corners used as evidence or used for proportioning in determining the corner location?

Since this is a Township line, held straight line between existing corners East & West. Matched all lines of occupation, distances looked very good.



(11) I, David L. Osterbrink RLS No. S-2014 (type or print name) certify that the corner location shown on this record was determined by me or under my direction and control and that this U.S. Public Land Survey Monument Record is correct and complete to the best of my knowledge and belief.

David L. Osterbrink
Signature

2-28-92
Date

