

CERTIFIED LAND CORNER RESTORATION

Index No. B-15

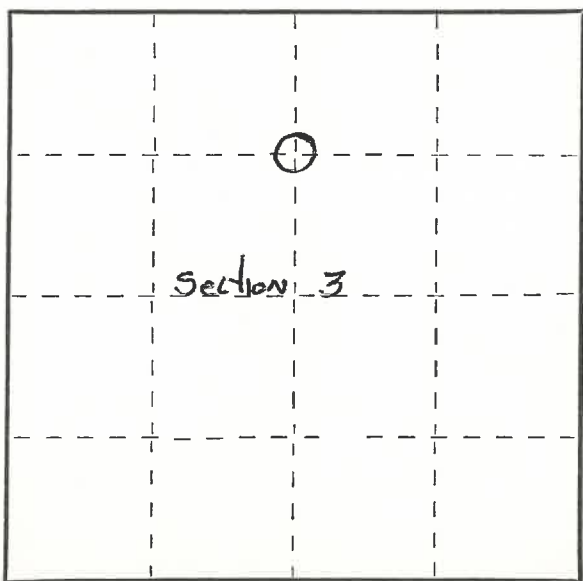
43012033020

FORM 985 H. C. MILLER CO., MILWAUKEE

State of Wisconsin }
County of Laugetade } ss.

I Raymond J. Hallisy, do hereby certify that on the 30th day of November, 19 74, I found evidence of the corner of Township _____, North, Range _____, Fourth Principal Meridian, as described hereon; and that from this evidence I established a new monument and accessories as described hereon to perpetuate the original location of this corner.

Resident witnesses:



○ = Corner monument restored.

History of original corner establishment:

CORNER SET BY M. HUTCHINSON
IN 1932 RE SURVEY

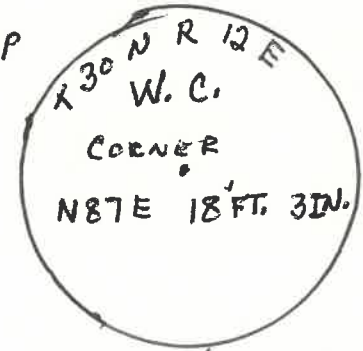
Description of corner evidence found:

Found squared + pointed stake in water
old BT stump 29 1/2 LKS (CEDAR 10W 29.5 LINKS)

Description of monument and accessories I established to perpetuate the original location of this corner.

SET 1 1/2 INCH IRON PIPE WITH BRASS CAP
AS W.C. DROVE steel FENCE POST AT
CORNER IN WATER,

New D.t.s
Red maple 8" S82 W 12 FT. 8 inches
Yellow Birch 6" N36 W 13 FT. 1 inch



Dated at Antigo, Wis., this 30th day of November, 19 74.

Signature Raymond Hallisy Title Reg. Land Surveyor Registration No. 5-685
(County Surveyor, Registered Land Surveyor, or other duly authorized official)

Office of Register of Deeds, County of _____, I hereby certify that the within instrument was filed in this office for record on the _____ day of _____, 19 _____ at _____ o'clock _____ M.

(Register of Deeds)

By _____ Deputy