

CERTIFIED LAND CORNER RESTORATION

30-12

Index No. E-15

State of Wisconsin }  
County of LANGLADE } ss.

I THOMAS R. ARNOTT, do hereby certify that on the 23<sup>RD</sup> day of MAY, 1972, I found evidence of the 1/4 SEC. corner of SECS. 3 & 10 Township 30N, North, Range 12E, Fourth Principal Meridian, as described hereon; and that from this evidence I established a new monument and accessories as described hereon to perpetuate the original location of this corner.

Resident witnesses:  
\_\_\_\_\_  
\_\_\_\_\_  
\_\_\_\_\_

History of original corner establishment:

Description of corner evidence found:

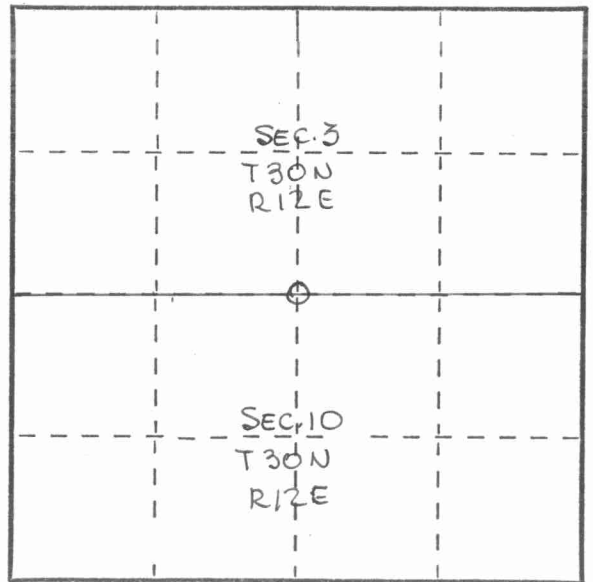
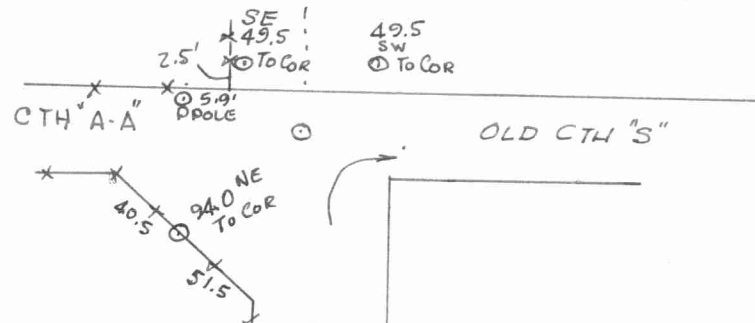
FOUND IRON IMBEDDED IN ROAD.



*Thomas R. Arnott*

Description of monument and accessories I established to perpetuate the original location of this corner.

SET 3 WITNESS CORNERS MKD



Dated at ANTIGO, Wis., this 15<sup>TH</sup> day of JUNE, 1973

Signature Thomas R. Arnott Title REG. LAND SURVEYOR Registration No. 5887  
(County Surveyor, Registered Land Surveyor, or other duly authorized official)

Office of Register of Deeds, County of \_\_\_\_\_, I hereby certify that the within instrument was filed in this office for record on the \_\_\_\_\_ day of \_\_\_\_\_, 19\_\_\_\_ at \_\_\_\_\_ o'clock \_\_\_\_\_ M.

(Register of Deeds)

By \_\_\_\_\_ Deputy

*Robert Paul County Surveyor*

43012032070

FORM 985 H. C. MILLER CO., MILWAUKEE

○ = Corner monument restored.