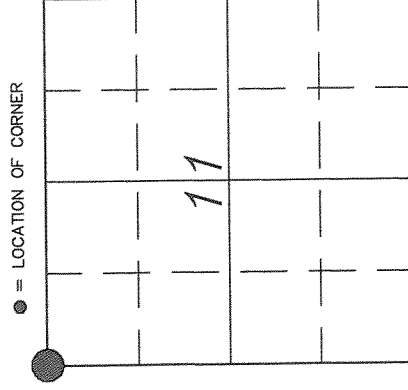


4301203 0000

# U.S. PUBLIC LAND SURVEY MONUMENT RECORD

## HISTORY OF ORIGINAL CORNER ESTABLISHMENT AND SUBSEQUENT RESTORATION AND DESCRIPTION OF ANY RECORD, MONUMENT OCCUPATIONAL, TESTIMONIAL OR OTHER EVIDENCE CONSIDERED:

The Original Corner was established in 1854 by James Withrow. Original bearing trees: Hemlock 10" N46W 26lks., Hemlock 8" S19E 13lks. In 1901, Webley traversed from the NW Cor of Sec 11 to the W 1/4 of Sec 2, with a distance of 40 chains. On 7/9/01, Mark Levitski and Gerry Bahar located a 2" pipe, identified by the County Surveyor as the correct corner, 35' South of an erroneously set monument by Kelly. This location fit well with our other survey work done in Sec 11. This location was accepted and we tied it out.

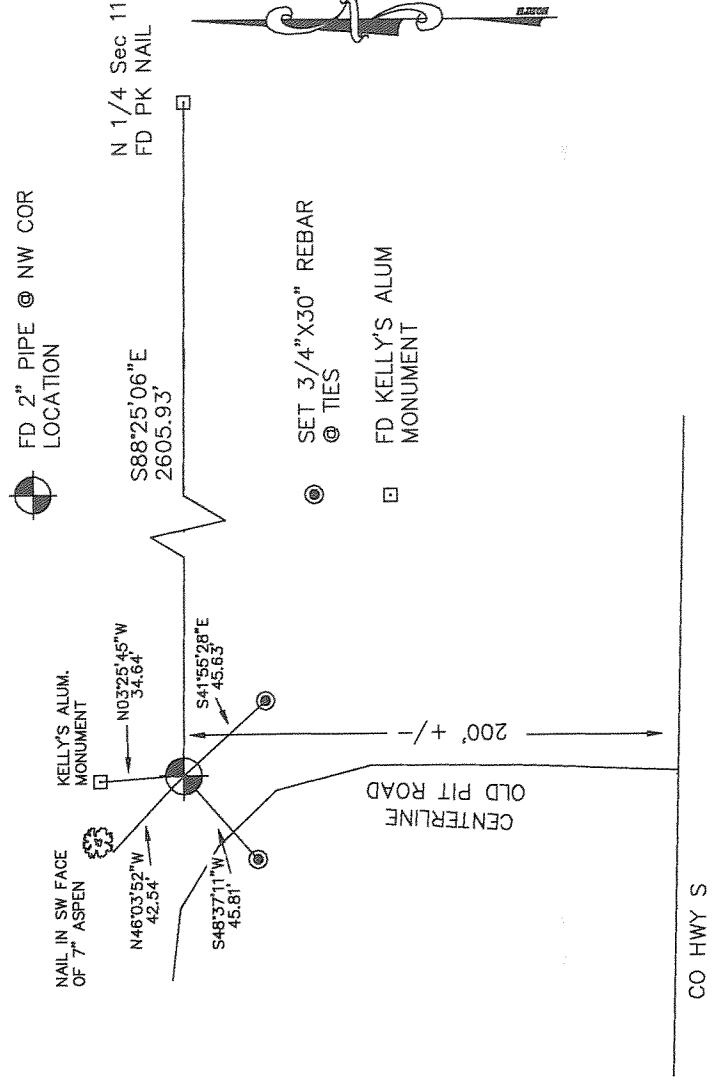


SECTION 11  
 TOWNSHIP 30 NORTH, RANGE 12 EAST  
 TOWN OF NORWOOD  
 LANGLADE COUNTY, WISCONSIN

### CORNER WAS: (CHECK ALL THAT APPLY)

- RESTORED THROUGH ACCEPTANCE OF AN OBLITERATED EVIDENCE LOCATION
- RESTORED THROUGH ACCEPTANCE OF A FOUND PERPETUATED LOCATION
- CONSIDERED A LOST CORNER AND REESTABLISHED THROUGH LOST CORNER PROPORTIONATE METHODS (INCLUDE A PLAN VIEW DRAWING SHOWING DISTANCES AND DIRECTIONS TO OTHER PUBLIC LAND SURVEY CORNERS USED FOR PROPORTIONING AND DETERMINING THE CORNER LOCATION)
- RESTORED OR REESTABLISHED IN A LOCATION THAT DIFFERS FROM A PREVIOUS RESTORATION OR REESTABLISHMENT (INCLUDE A PLAN VIEW DRAWING AND INDICATE WHAT WAS SET AND/OR FOUND)
- CHECK IF THERE IS ADDITIONAL INFORMATION ON BACK

DESCRIBE THE MONUMENT AND ACCESSORIES USED TO PERPETUATE THE LOCATION OF THE CORNER. (INCLUDE A PLAN VIEW DRAWING AND INDICATE WHAT WAS SET AND/OR FOUND) ALSO INCLUDE FOUR TIES TO THE SECTION CORNER AND DESCRIPTION OF THE TIES.

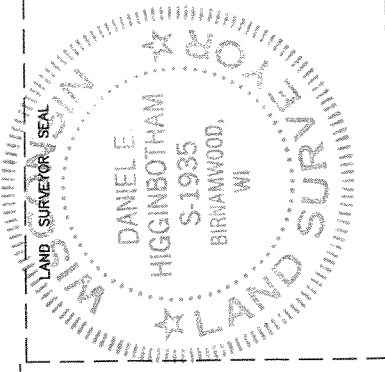


DANIEL E. HIGGINBOTHAM

(type or print name) CERTIFY THAT THE CORNER LOCATION SHOWN ON THIS RECORD WAS DETERMINED BY ME OR UNDER MY DIRECTION AND CONTROL AND THAT THIS U.S. PUBLIC LAND SURVEY MONUMENT RECORD IS CORRECT AND COMPLETE TO THE BEST OF MY KNOWLEDGE AND BELIEF.

*Daniel E. Higginbotham*  
SIGNATURE

3/19/07  
DATE



E 17

INDEX NO.