

4/30/2010 2000 2017

U.S. PUBLIC LAND SURVEY MONUMENT RECORD

HISTORY OF ORIGINAL CORNER ESTABLISHMENT AND SUBSEQUENT RESTORATION AND DESCRIPTION OF ANY RECORD, MONUMENT OCCUPATIONAL, TESTIMONIAL OR OTHER EVIDENCE CONSIDERED:

THE ORIGINAL CORNER WAS SET BY WJ NEELY IN 1853. THE ORIGINAL BEARING TREES WERE:

BIRCH 10" S70°W 20 LINKS

CHERRY 12" N 34°E 14 LINKS

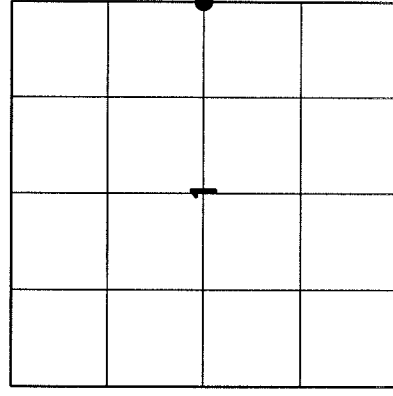
1933-GLO FOUND THE ORIGINAL BEARING TREES AND SET A 6" X 24" CONCRETE MONUMENT WITH BRASS CAP

1990- KELLY LOCATED A 1" IRON ROD 6" BELOW THE ROAD SURFACE 6' EAST OF THE CENTERLINE

1996- TLUSTY DUG WITH A BACKHOE AND DID NOT FIND THE GLO CONCRETE MONUMENT. HE ACCEPTED THE IRON ROD AS THE BEST LOCATION.

2017-I FOUND THE IRON ROD AND SOME TIES AS SHOWN

● = LOCATION OF CORNER

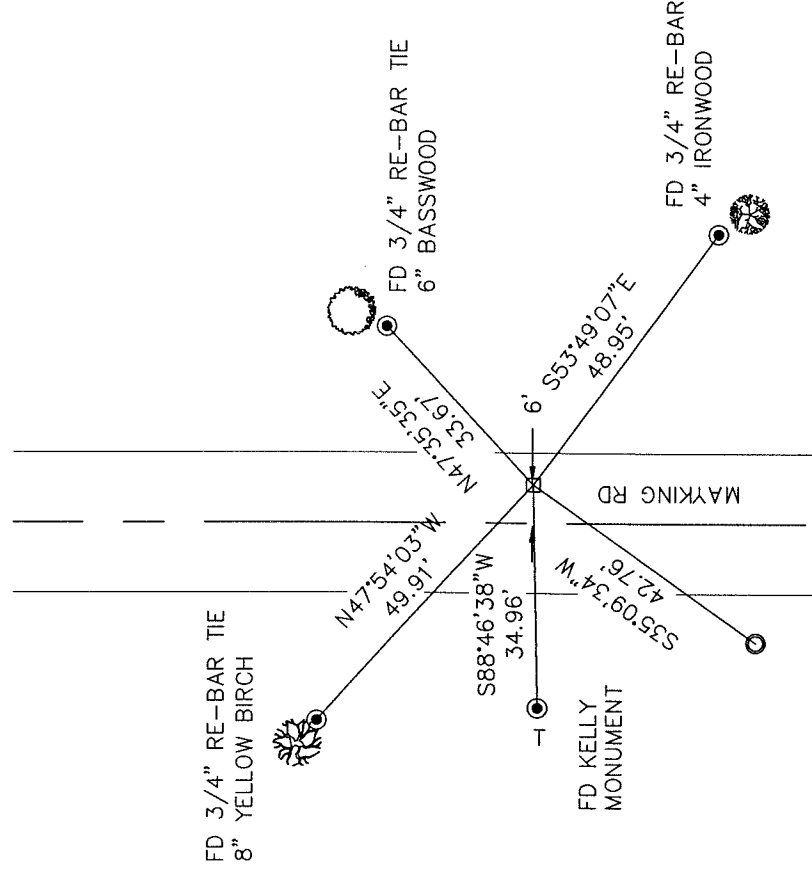


SECTION 1
 TOWNSHIP 30 NORTH, RANGE 12 EAST
 TOWN OF NORWOOD
 LANGLADE COUNTY, WISCONSIN

CORNER WAS: (CHECK ALL THAT APPLY)

- RESTORED THROUGH ACCEPTANCE OF AN OBLITERATED EVIDENCE LOCATION
- RESTORED THROUGH ACCEPTANCE OF A FOUND PERPETUATED LOCATION
- CONSIDERED A LOST CORNER AND REESTABLISHED THROUGH LOST CORNER PROPORTIONATE METHODS (INCLUDE A PLAN VIEW DRAWING SHOWING DISTANCES AND DIRECTIONS TO OTHER PUBLIC LAND SURVEY CORNERS USED FOR PROPORTIONING AND DETERMINING THE CORNER LOCATION)
- RESTORED OR REESTABLISHED IN A LOCATION THAT DIFFERS FROM A PREVIOUS RESTORATION OR REESTABLISHMENT (INCLUDE A PLAN VIEW DRAWING AND INDICATE WHAT WAS SET AND/OR FOUND)
- CHECK IF THERE IS ADDITIONAL INFORMATION ON BACK

DESCRIBE THE MONUMENT AND ACCESSORIES USED TO PERPETUATE THE LOCATION OF THE CORNER. (INCLUDE A PLAN VIEW DRAWING AND INDICATE WHAT WAS SET AND/OR FOUND) ALSO INCLUDE FOUR TIES TO THE SECTION CORNER AND DESCRIPTION OF THE TIES.



○ SET 3/4" x 30" RE-BAR AT TIE LOCATIONS

T- 6 FOOT WHITE VINYL POST SET

BEARING REFERENCED TO MAGNETIC

COORDINATE DATUM NAD 83(2011)

N 328638.5960
 E 664263.1250

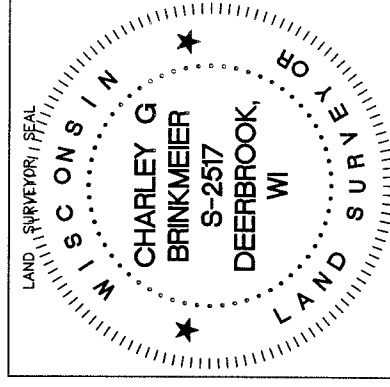


CHARLEY G. BRINKMEIER

(Type or print name) CERTIFY THAT THE CORNER LOCATION SHOWN ON THIS RECORD WAS DETERMINED BY ME OR UNDER MY DIRECTION AND CONTROL AND THAT THIS U.S. PUBLIC LAND SURVEY MONUMENT RECORD IS CORRECT AND COMPLETE TO THE BEST OF MY KNOWLEDGE AND BELIEF.

Charley G. Brinkmeier
 SIGNATURE

10-24-17
 DATE



INDEX NO. 025 30-12