

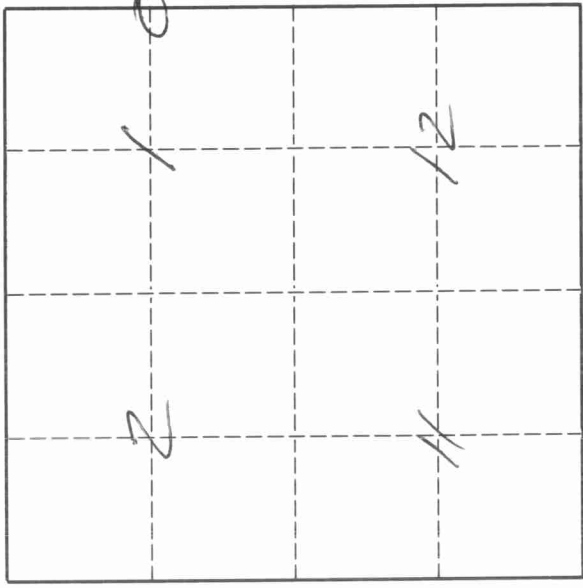
43012012000

# U. S. PUBLIC LAND SURVEY MONUMENT RECORD

## INSTRUCTIONS:

This record shall show the location of the corner and shall include all of the following nine elements (a through i).

- (a) Identify the corner by reference to the U.S. public land survey system.
- O = Corner monument restored.



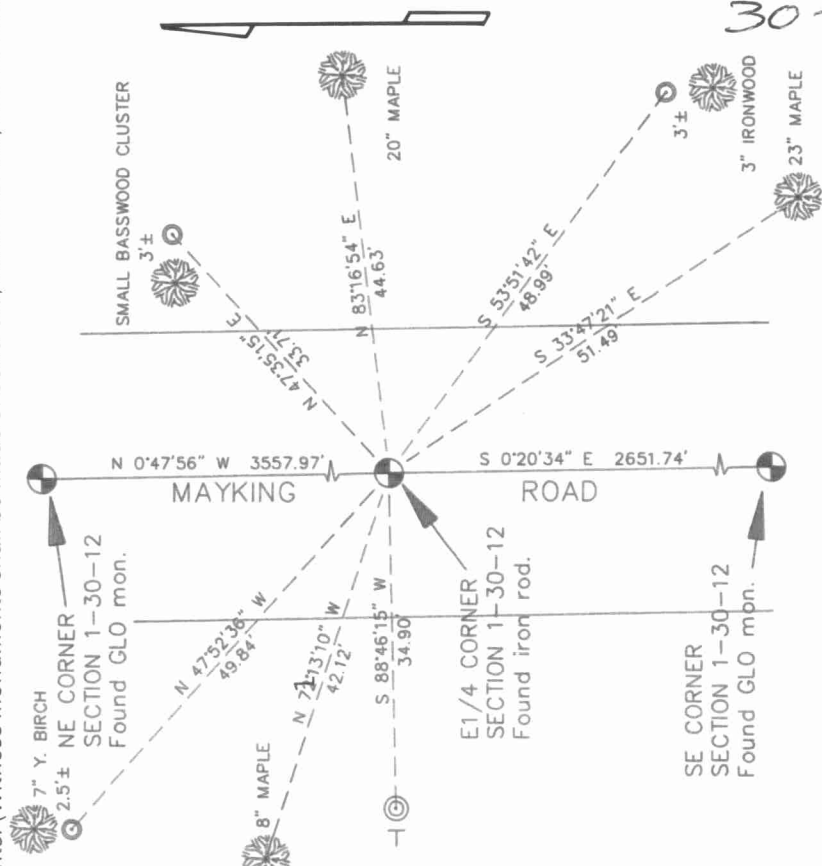
The East Quarter corner of Section 1, Township 30 North, Range 12 East, Langlade County, Wisconsin.

T. 30 N., R. 12 E.

- (b) Describe any record evidence, monument evidence, occupational evidence, testimonial evidence or any other material evidence you considered, and whether the monument was found or placed.

The original corner was established in 1853 by Wm. J. Neely. Original BT's: birch 10", S70°W, 20 lks. and cherry, 12", N34°E, 14 lks. In 1933, the GLO surveyors found original bearing trees evidence. Set 6" dia. x 24" conc. mon., 24" in ground with brass table and bearing trees. In 1990, former surveyor Kelly "located 1" iron rod, 6" below surface, 6' E. of center of road. Set 3" alum. wit. mon. 35' West and 3 BT's. 05/16/96 D. Tlusty, R. Brown dug with backhoe. Dug a considerable hole but could not find the GLO concrete monument. After analysis of the position of the existing iron rod, I accept it as the best location of a restored GLO corner location and perpetuate said location as shown hereon.

- (c) In the plan view drawing below, provide reference ties to at least 4 witness monuments, or, if the location is within a municipality, to at least 2 witness monuments. (Witness monuments shall be made of concrete, natural stone, iron or other equally durable material.) Describe witness monuments.



- (d) Show a plan view drawing depicting the relevant monuments and reference ties which is sufficient in detail to enable accurate relocation of the corner monument if the corner monument is disturbed. Indicate north.

- NOTES:
- ⊙ KELLY'S 2" ALUM. WIT. MON.
  - ⊙ 3/4" x 30" RE-BAR WITNESS SET
  - △ RR SPIKE FOUND IN ROAD
  - POWER POLE
  - └ VINYL SIGN POST SET
  - 🌳 BEARING TREES MEASURED TO ALUM. NAIL IN LOW BLAZE ON RT. SIDE OF TREE.
- BEARINGS TAKEN FROM GLO RESURVEY AND REFERENCED TO SECTION LINE SHOWN.

C25  
30-12

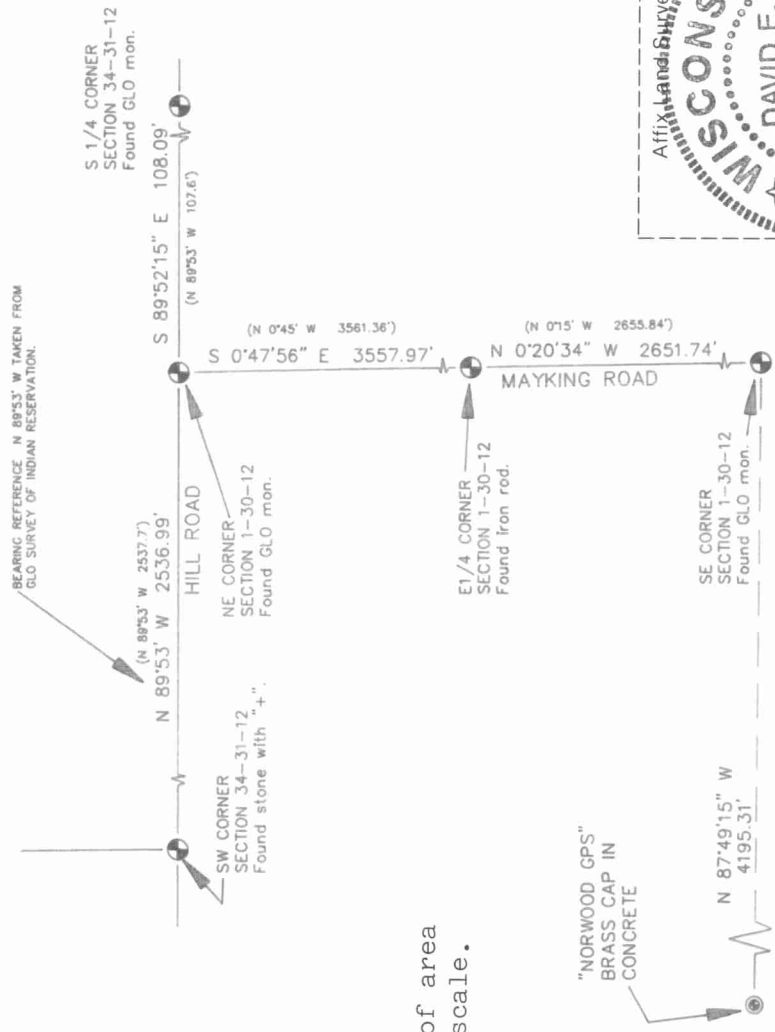
430/20/2000

Describe any material discrepancy between the location of the corner as restored or reestablished and the location of that corner as previously restored or reestablished by distance and direction. Show the discrepancy on the plan view drawing under (d), above. Show the distances between the corner as previously restored or reestablished and (1) the corner as restored or reestablished, and (2) to at least 2 of the witness monuments shown on the drawing in (d), above.

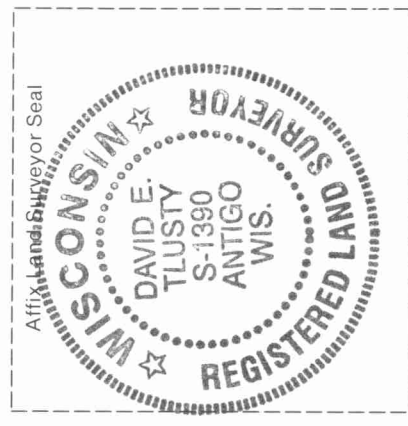
No discrepancy.

- (f) Was the corner restored through acceptance of (1) an obliterated evidence location, or, (2) a found perpetuated location?  
A found perpetuated location.

(g & h) Was the corner reestablished through lost corner proportionate methods? If so, show the method, including the directions and distances to other public land survey corners used as evidence or used for proportioning in determining the corner location.



Sketch of area  
Not to scale.



(i) I, David E. Tlusty, Langlade County Surveyor,  
 (type or print name)  
 certify that the corner location shown on this record was determined by me or under my direction and control and that this U.S. Public Land Survey Monument Record is correct and complete to the best of my knowledge and belief.

David E. Tlusty      7/6/96  
 Signature      Date