

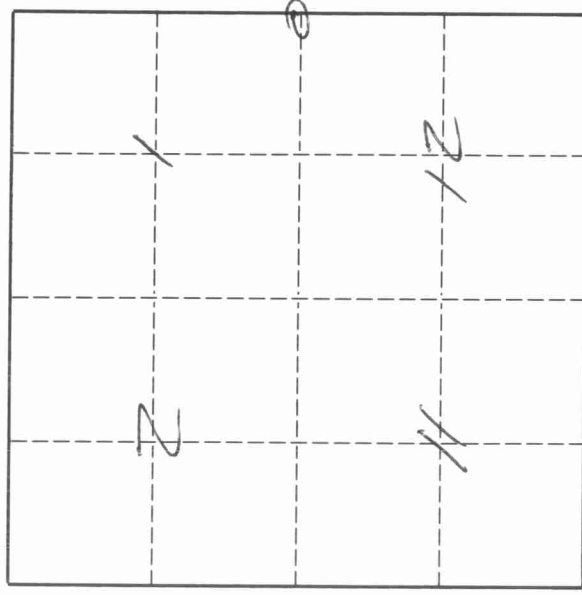
43012010000

U. S. PUBLIC LAND SURVEY MONUMENT RECORD

INSTRUCTIONS:

This record shall show the location of the corner and shall include all of the following nine elements (a through i).

- (a) Identify the corner by reference to the U.S. public land survey system.
- O = Corner monument restored.



Southeast corner of Section 1, Township 30 North, Range 12 East, Langlade County, Wisconsin.

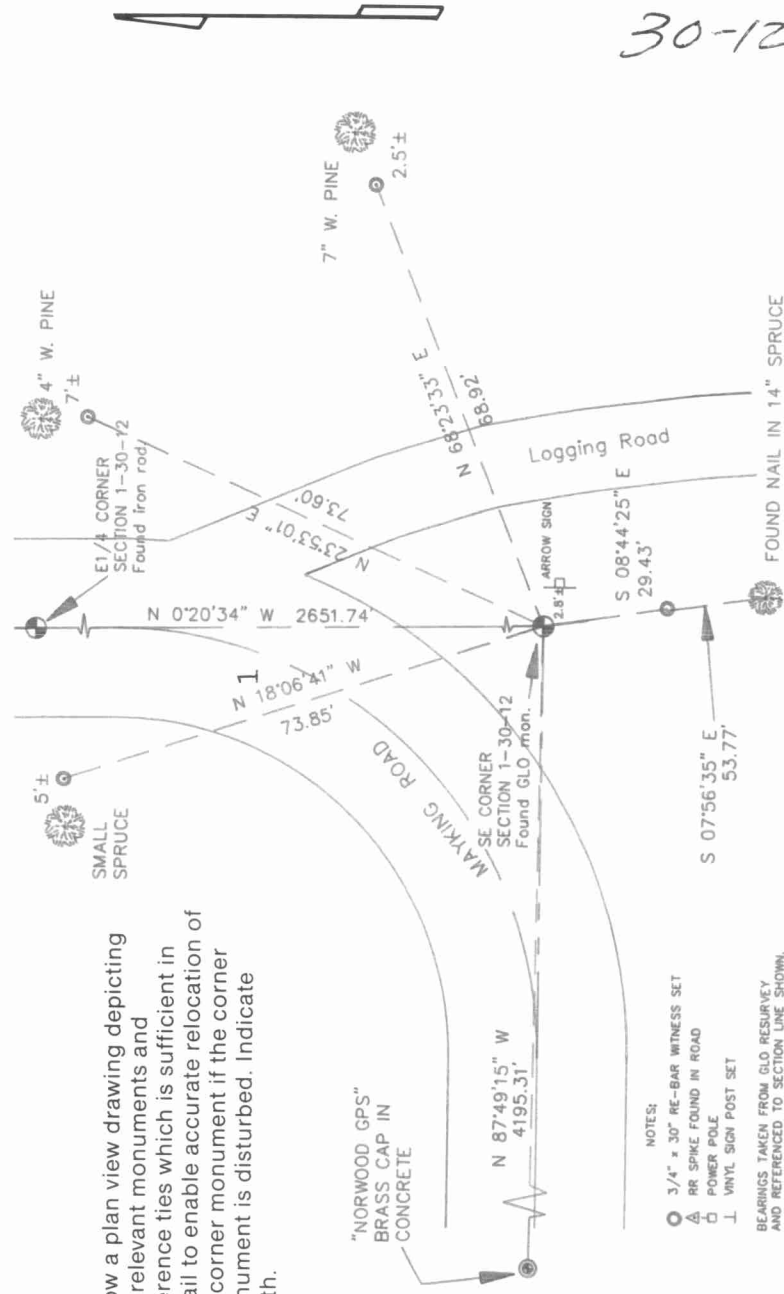
T. 30 N., R. 12 E.

- (b) Describe any record evidence, monument evidence, occupational evidence, testimonial evidence or any other material evidence you considered, and whether the monument was found or placed.

The original corner was established in 1853 by Wm. J. Neely. Original BT's all ironwood: 8", S27°W, 35 lks.; 8", N30°W, 32 lks.; 8", N61°E, 18 lks., and 10", S31°E, 10 lks. Malcolm Hutchinson (date unknown) call the corner a stone 9" x 9" x 24" "X" on top. In 1933, the GLO surveyors found stone "7" x 7" x 3" above ground, set by a former county surveyor, from original bearing trees". Set 6" dia. x 24" conc. mon. with brass table and bearing trees. In 1990, former surveyor Kelly "located 1½" iron pipe as corner with 1¼" iron pipe wit. cor. Set 3" alum. mon.". 05/16/96 D. Tlusty, R. Brown dug with backhoe. Found GLO monument in good condition as described, alongside stone with chiseled "X", and under pipe and monument described by Kelly. (con't on reverse)

- (c) In the plan view drawing below, provide reference ties to at least 4 witness monuments, or, if the location is within a municipality, to at least 2 witness monuments. (Witness monuments shall be made of concrete, natural stone, iron or other equally durable material.) Describe witness monuments.

- (d) Show a plan view drawing depicting the relevant monuments and reference ties which is sufficient in detail to enable accurate relocation of the corner monument if the corner monument is disturbed. Indicate north.



- NOTES:
- 3/4" x 30" RE-BAR WITNESS SET
 - ▲ RR SPIKE FOUND IN ROAD
 - POWER POLE
 - ┆ VINYL SIGN POST SET
- BEARINGS TAKEN FROM GLO RESURVEY AND REFERENCED TO SECTION LINE SHOWN.

E25
30-12

(KELLY CALLED FOR
16" BALSAM 56°30'W, 53.65')

