

4 30 11 36 20 00

U.S. PUBLIC LAND SURVEY MONUMENT RECORD

(Prepared and as required by S. A-E 7.08 WI Administrative Code)
The West 1/4 corner of Section 31, T. 30N., R12E., Langlade County, WI

Corner was: (check all that apply)

- Restored through acceptance of an obliterated evidence location.
- Restored through acceptance of a found perpetuated location.
- Determined to be lost and reestablished through proportionate methods.
(Show bearings and distances to PLSS corners used for proportioning)
- Restored/recovered/reestablished in a location that differs from a previously established position. (Show difference in plan view below.)
- Check here if additional information is shown on the reverse side of this form.

Describe record evidence, recovered physical evidence, occupational evidence, testimonial evidence and all other evidence considered in the recovery/restoration of corner.

1853: Corner originally set by W.J. Neely. BT's Tamarack 12", N4°W, 12 links; Tamarack 10", S17°E, 35 links.

1980: RLS Edwim Abendroth "Set standard Langlade County monument at proportionate distance between NW and SW section corners." Abendroth recorded a tie sheet indicating he set 3 BT's: Maple 14", 78.79'; Oak 2", 21.22'; Elm 6", 39.63'. the corner he set fell 13' east of the center line of S. Rollwood Rd. To proportion this 1/4 corner, Abendroth had reset the SW section corner at a found fence post location.

1982: RLS Bob Nordin found the SW section corner as set by Surveyor J. Melendy in 1907, at a location 28' west of Abendroth's location.

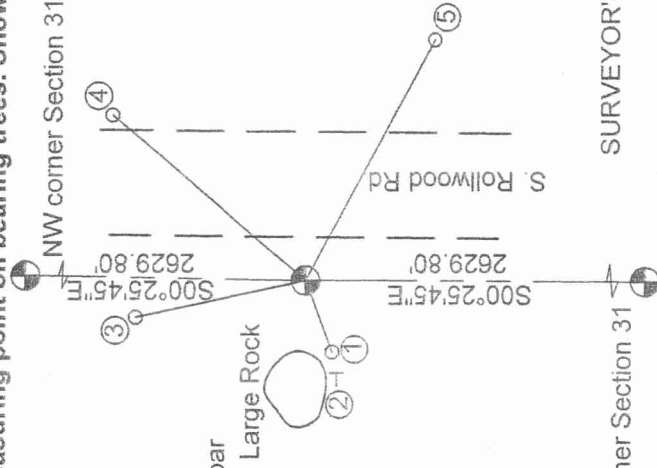
2005: I found one of Abendroth's BT's (Maple in westerly direction) and found his monument lying in the ditch west of S. Rollwood Rd. It appears the road had been relocated east to match Abendroth's corner location. I reset the 1/4 corner midway between the NW corner and Melendy's 1907(Nordin's 1982) SW corner, believing this to be the best perpetuation of the original record. This places the corner approx 14' west of the centerline of re-located S. Rollwood Rd.

Physical description of the monument set:

I reset Abendroth's brass capped monument at the new location and tied as follows.

Describe the accessories used to perpetuate the location of the corner. Include a plan view drawing and indicate accessories found/set. Describe measuring point on bearing trees. Show any topographic features that would aid in future recovery of the corner.

- ① 3/4" rebar S74°54'54"W 17.57'
- ② White Plastic T-post 0.5' west of rebar
- ③ 3/4" rebar N22°51'55" W 34.48'
- ④ 3/4" rebar N39°38'14"E 46.25'
- ⑤ 3/4" rebar S52°21'42"E 40.45'



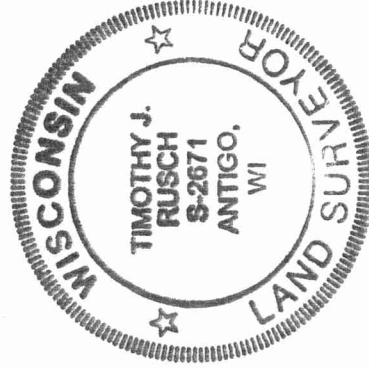
NOT TO SCALE

DRAFTED BY:
PAUL MATTMILLER

SURVEYOR'S SEAL

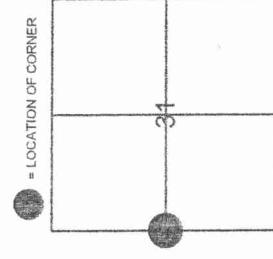
SW corner Section 31

The West 1/4
corner of Section 31
T. 30 N., R. 12 E.
Langlade County, WI



I, Timothy J. Rusch RLS 2671, certify that the corner location shown on this record was determined by me or under my direction and control and that this U.S. Public Land Survey Record is correct and complete to the best of my knowledge and belief.

Timothy J. Rusch
Signature
12/7/2005
Date



Bearings are referenced to
Langlade Co. coordinate system grid