

CERTIFIED LAND CORNER RESTORATION

Index No. X-1

State of Wisconsin }
County of Langlade } ss.

I Edwin R. Abendroth do hereby certify that on the 10th day of July, 1980, I found evidence of the West 1/4 corner of Section 31 Township 30, North, Range 12 East, Fourth, Principal Meridian, as described hereon; and that from this evidence I established a new monument and accessories as described hereon to perpetuate the original location of this corner.

Resident witnesses:

.....
.....
.....

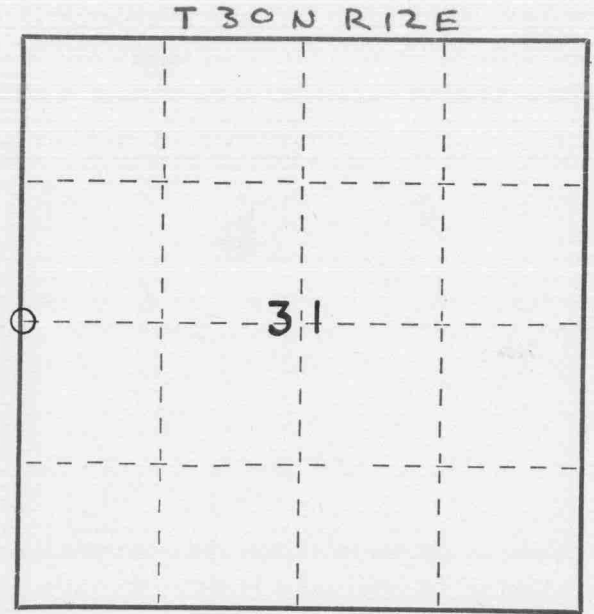
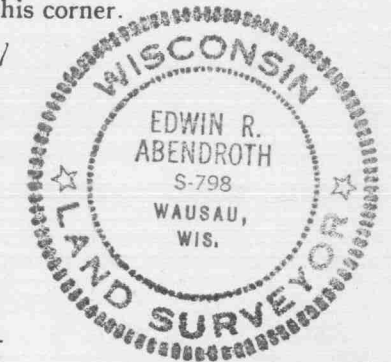
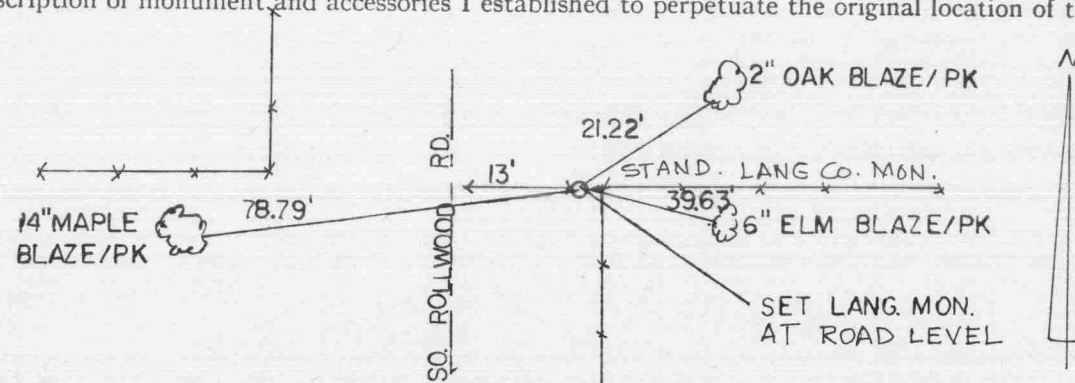
History of original corner establishment:

Original survey conducted, started November 1854, finished December, 1854, by James Withrow, deputy Surveyor, found no original evidence as per original government notes.

Description of corner evidence found:

Set standard Langlade County monument at proportionate distance between NW and SW Section corners. Corner fell on old fence line.

Description of monument and accessories I established to perpetuate the original location of this corner.



○ = Corner monument restored.

Dated at Wausau, Wis., this 12th day of August, 1980.

Signature Edwin R. Abendroth Registered Land Surveyor Registration No. S-798
(County Surveyor, Registered Land Surveyor, or other duly authorized official)

Office of Register of Deeds, County of _____, I hereby certify that the within instrument was filed in this office for record on the _____ day of _____, 19____ at _____ o'clock _____ M.

(Register of Deeds)

By _____ Deputy

4 30 11 36 20 00