

LANGLADE COUNTY U.S. PUBLIC LAND CORNER RESTORATION

The East Quarter corner of Section 35, T. 30 N., R. 11 E., Langlade County, WI.

Corner was: (check all that apply)

4 3011352000

- Restored through acceptance of an obliterated evidence location.
- Restored through acceptance of a found perpetuated location.
- Determined to be lost and re-established through proportionate methods.
- Show bearings and distances to PLSS corners used for proportioning, and show original distances).
- Restored/recovered/re-established in a location that differs from a previously established position.
- (Show difference in plan view below).
- Check here if additional information is shown on the reverse side of this form.

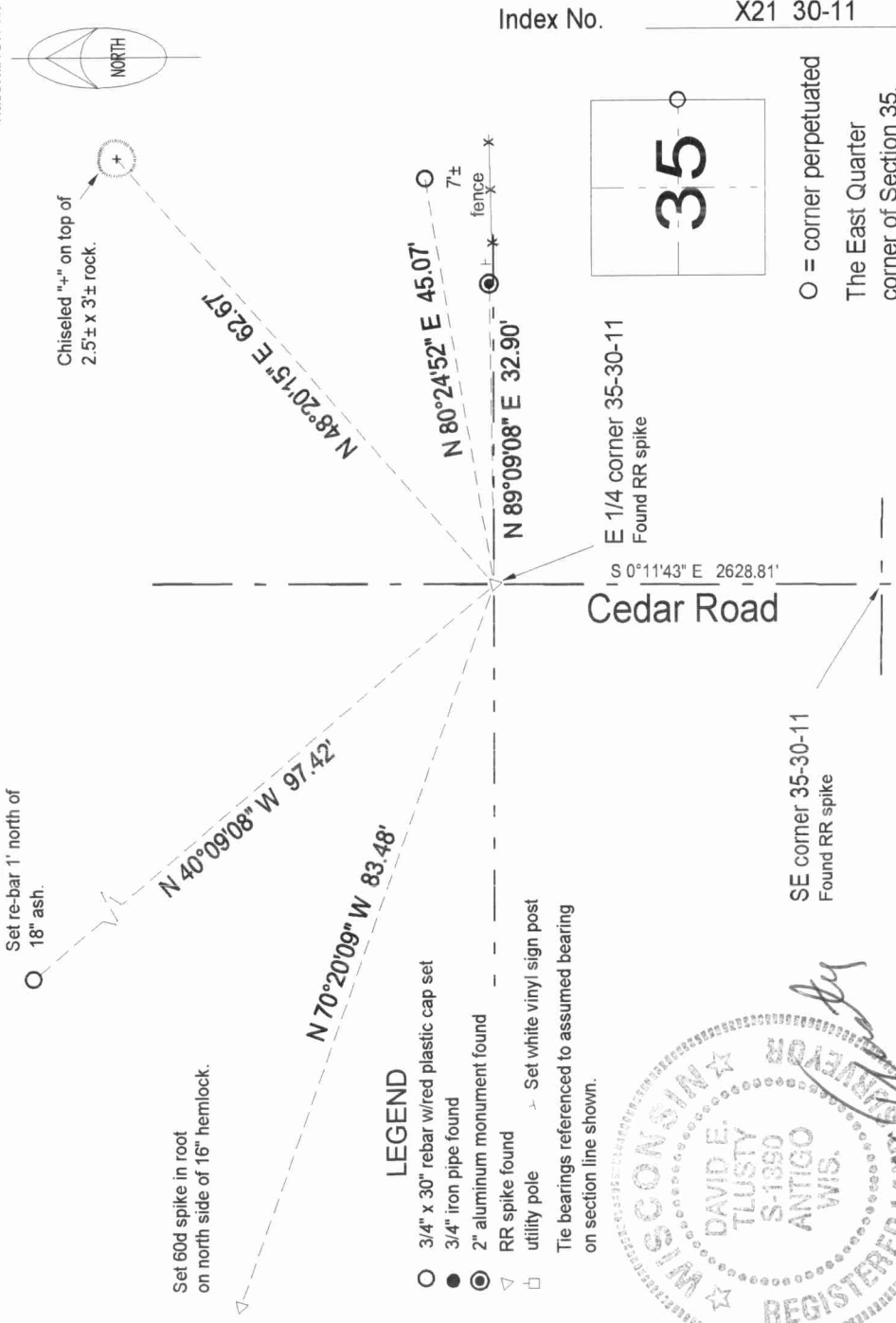
Describe record evidence, recovered physical evidence, occupational evidence, testimonial evidence and all other evidence considered in the recovery/restoration of the corner.

The original corner was established in 1853 by William T. Bradley. Original bearing trees: maple, 8", S57°W, 19 links and a maple, 10", S81°E, 45 links. In 1982 and 1983 former surveyor Kelly did two CSM's in Section 35, showed this corner on one of those CSM's but didn't describe it or didn't do a tie sheet at that time. In 1990 he "found in place: RR spike in centerline & fence intersection". He marked two BT's, set a pipe SE and set an aluminum monument 33' East. 11/15/94 D. Tlusty found RR spike in center of road and in line with fence to the East. There is no record evidence on file for this corner, therefore I accept the RR spike found as the best evidence of the corner. I measured the ties below prior to the reconstruction of Cedar Road.

Physical description of the monument set:

Left existing RR spike in place but it's more than likely to be destroyed in the near future.

Describe the accessories used to perpetuate the corner. Include a plan view drawing and accessories found/set. Describe measuring point on bearing trees. Show any topographic features that would aid in future recovery of the corner.



David E. Tlusty

I, David E. Tlusty, Registered Land Surveyor, as Langlade County Surveyor, certify that the corner location on this record was determined by me and that this U.S. Public Land Survey Monument Record is correct to the best of my knowledge and belief.

Index No. X21 30-11

O = corner perpetuated
The East Quarter corner of Section 35, T. 30 N., R. 11 E., Langlade County, WI