

LANGLADE COUNTY U.S. PUBLIC LAND CORNER RESTORATION

The Southeast corner of Section 35, T. 30 N., R. 11 E., Langlade County, WI.

Corner was: (check all that apply)

3011350000

- Restored through acceptance of an obliterated evidence location.
- Restored through acceptance of a found perpetuated location.
- Determined to be lost and re-established through proportionate methods.
- Show bearings and distances to PLSS corners used for proportioning, and show original distances).
- Restored/recovered/re-established in a location that differs from a previously established position.
- (Show difference in plan view below).
- Check here if addition information is shown on the reverse side of this form.

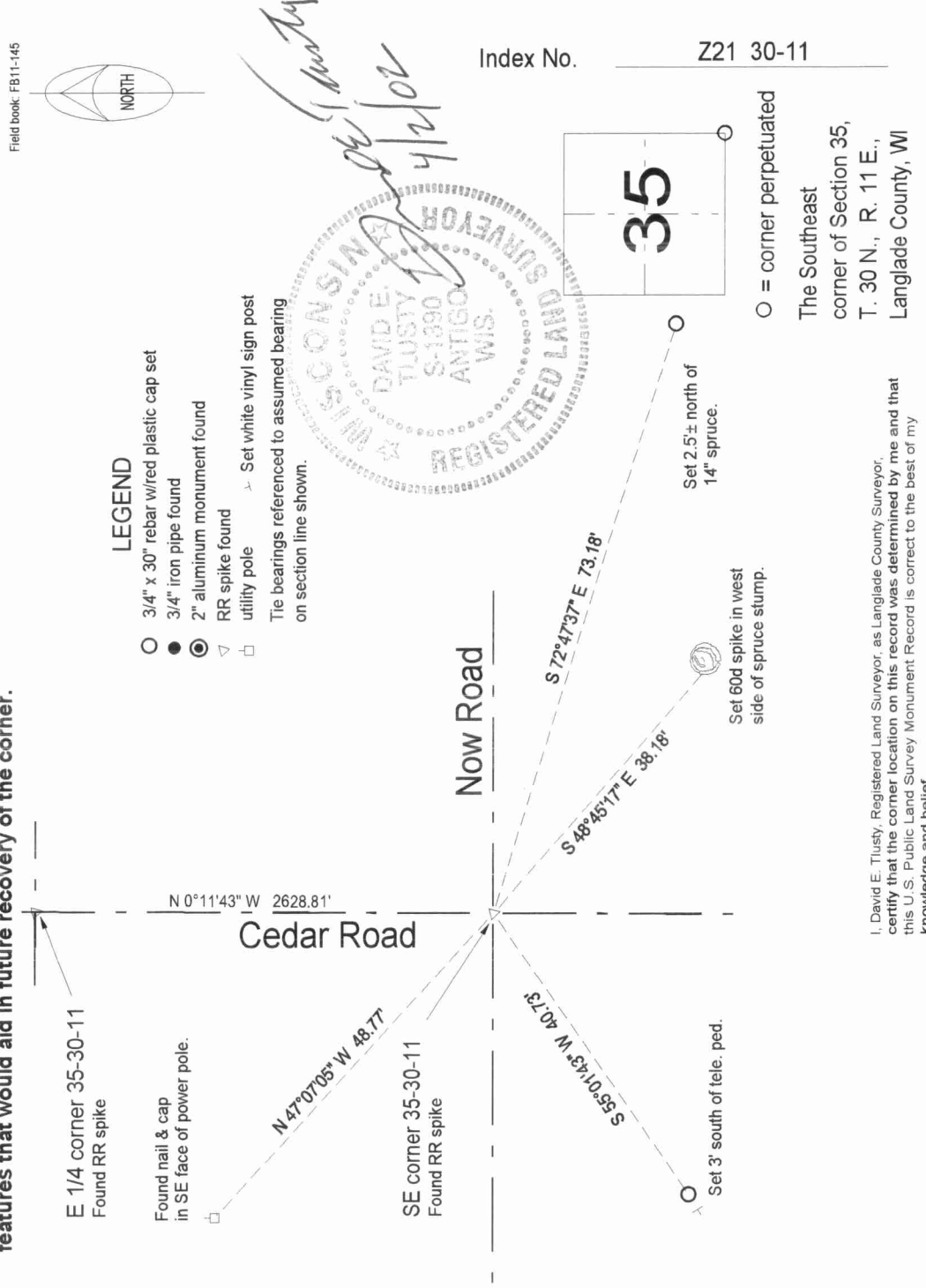
Describe record evidence, recovered physical evidence, occupational evidence, testimonial evidence and all other evidence considered in the recovery/restoration of the corner.

The original corner was established in 1853 by William J. Neeley. Original bearing trees: maple, 8", N04°W, 24 links; a lind, 8", N44°E, 21 links; a birch, 16", S45°E, 19 links and a maple, 12", S72°W, 35 links. Shawano County records indicate that J. Melendy set a well point for the corner. In 1982, former surveyor Kelly found an iron pipe in centerline. Set RR spike over iron pipe; Set 3" x 42" aluminum capped witness monument; marked 1 BT and 2 power poles. 11/15/94 D. Tlusty found RR spike at center of road intersection. I didn't verify if the RR spike is over an iron pipe. I tied the RR spike as shown below.

Physical description of the monument set:

Left existing RR spike in place.

Describe the accessories used to perpetuate the corner. Include a plan view drawing and accessories found/set. Describe measuring point on bearing trees. Show any topographic features that would aid in future recovery of the corner.



I, David E. Tlusty, Registered Land Surveyor, as Langlade County Surveyor, certify that the corner location on this record was determined by me and that this U.S. Public Land Survey Monument Record is correct to the best of my knowledge and belief.

The Southeast corner of Section 35, T. 30 N., R. 11 E., Langlade County, WI

Index No.

Z21 30-11

Field book: FB11-145