

CERTIFIED LAND CORNER RESTORATION

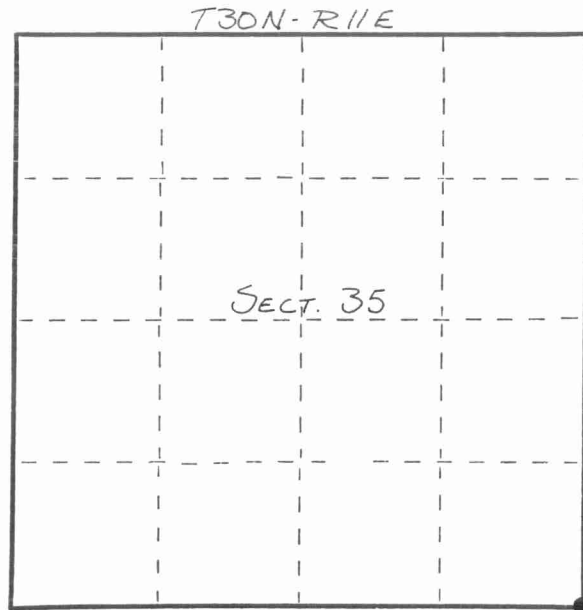
Index No. 2-21

State of Wisconsin }
 County of LANGLADE } ss.

I WILLIAM F. KELLY, do hereby certify that on the 10th day of DECEMBER, 1982, I found evidence of the SE corner of SECT. 35 Township 30, North, Range 11 EAST, Fourth Principal Meridian, as described hereon; and that from this evidence I established a new monument and accessories as described hereon to perpetuate the original location of this corner.

Resident witnesses:

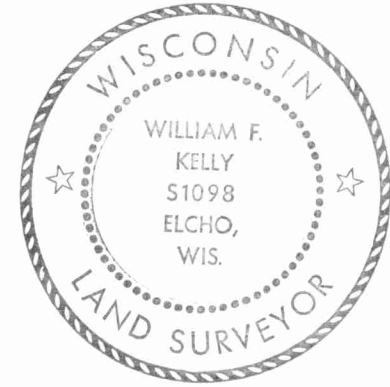
.....



○ = Corner monument restored.

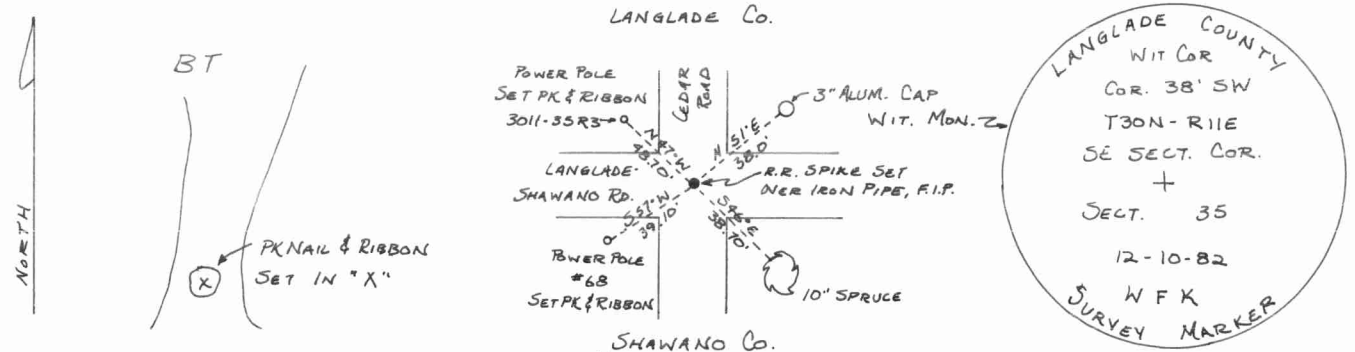
History of original corner establishment:
 ORIGINAL CORNER ESTABLISHED BY
 WILLIAM T. BRADLEY IN OCT., 1853

Description of corner evidence found:
 FOUND IN PLACE: IRON PIPE IN CENTERLINE.
 SET R.R. SPIKE OVER IRON PIPE. SET 3"x42" ALUMINUM CAP WITNESS MONUMENT.
 MARKED 1 BT & 2 POWER POLES AS WITNESS MONUMENTS.



William F. Kelly
 12-14-82

Description of monument and accessories I established to perpetuate the original location of this corner.



Dated at ELCHO, Wis., this 10th day of DECEMBER, 1982.

Signature William F. Kelly Title COUNTY SURVEYOR Registration No. 1098
 (County Surveyor, Registered Land Surveyor, or other duly authorized official)

Office of Register of Deeds, County of....., I hereby certify that the within instrument was filed in this office for record on the.....day of....., 19..... at.....o'clock..... M.

.....
 (Register of Deeds)

By.....Deputy

4 30 11 35 00 00