

CERTIFIED LAND CORNER RESTORATION

30-11

Index No. W-17

State of Wisconsin }  
County of LANGLADE } ss.

I, ROBERT J. POSS, do hereby certify that on the 6<sup>TH</sup> day of JULY, 1969, I found evidence of the NORTH 1/16 corner of SECS. 34 & 35 Township 30, North, Range 11 EAST, Fourth, Principal Meridian, as described hereon; and that from this evidence I established a new monument and accessories as described hereon to perpetuate the original location of this corner.

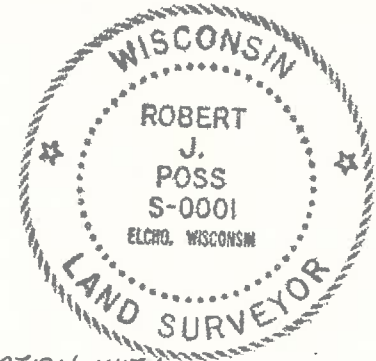
Resident witnesses:

ROLAND JANSEN

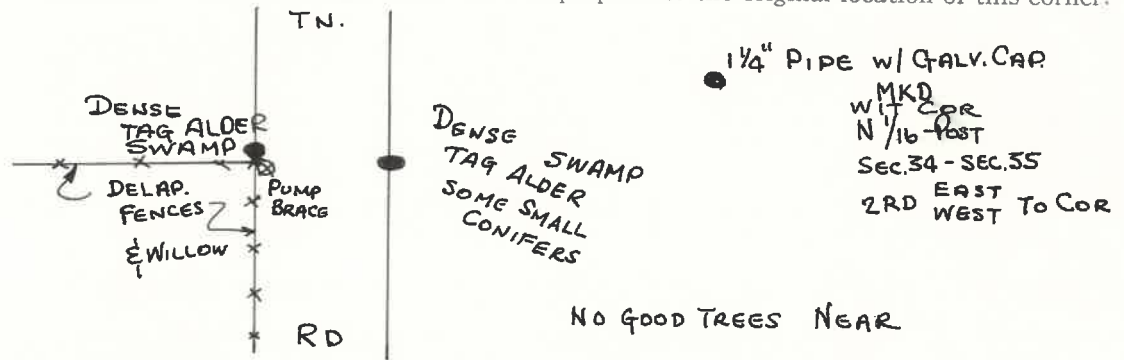
History of original corner establishment:

Description of corner evidence found:

CORNER OBLITERATED.  
JANSEN (2<sup>ND</sup> GENERATION OWNER) INDICATED LOCATION WITH REFERENCE TO FENCE LINE, OLD PUMP BRACE NEARBY - 2!



Description of monument and accessories I established to perpetuate the original location of this corner.



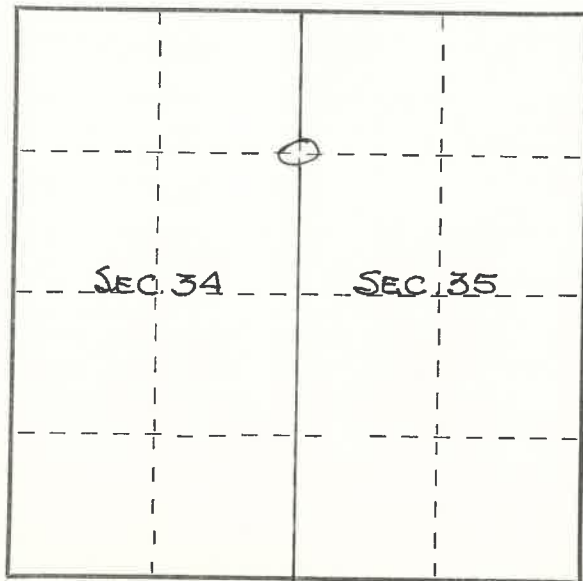
Dated at ELCHO, Wis., this 7<sup>TH</sup> day of JULY, 1969.

Signature Robert J. Poss Title REG. LAND SURVEYOR Registration No. S-0001  
(County Surveyor, Registered Land Surveyor, or other duly authorized official)

Office of Register of Deeds, County of \_\_\_\_\_, I hereby certify that the within instrument was filed in this office for record on the \_\_\_\_\_ day of \_\_\_\_\_, 19\_\_\_\_ at \_\_\_\_\_ o'clock \_\_\_\_\_ M.

(Register of Deeds)

By \_\_\_\_\_ Deputy



○ = Corner monument restored.

FORM 985 H. C. MILLER CO., MILWAUKEE

43011343000