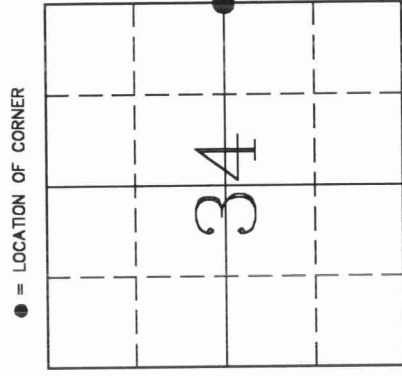


U.S. PUBLIC LAND SURVEY MONUMENT RECORD

HISTORY OF ORIGINAL CORNER ESTABLISHMENT AND SUBSEQUENT RESTORATION AND DESCRIPTION OF ANY RECORD, MONUMENT OCCUPATIONAL, TESTIMONIAL OR OTHER EVIDENCE CONSIDERED:

The original corner was established in 1853 by William T. Bradley. Original Bearing Trees: Spruce 13" S63E 10lks., Cedar 12" N65W 7lks. In 1901, Melendy, while not mentioning the East 1/4, does have a distance to the C1/4 of 2593.80' (our distance is 2611.74'). In May of 1969, Poss visited the corner and described "Corner is under 4' or more of gravel fill. Road was laid on line by survey-(No Date)". He set an 1 1/4" pipe with a Brass Cap marked Witness Corner, 50.0'E to Cor., and blazed 3 BT's. On 7/13/99, Becky and Gerry Bahar visited the corner and found Poss's W.C. laying on its side in the swamp. BT's were gone. We set a 4 1/2" Gear Headed Spike on C.L. of Sugar Bush Rd. at the extension of an old East-West fence in the swamp, and tied out.



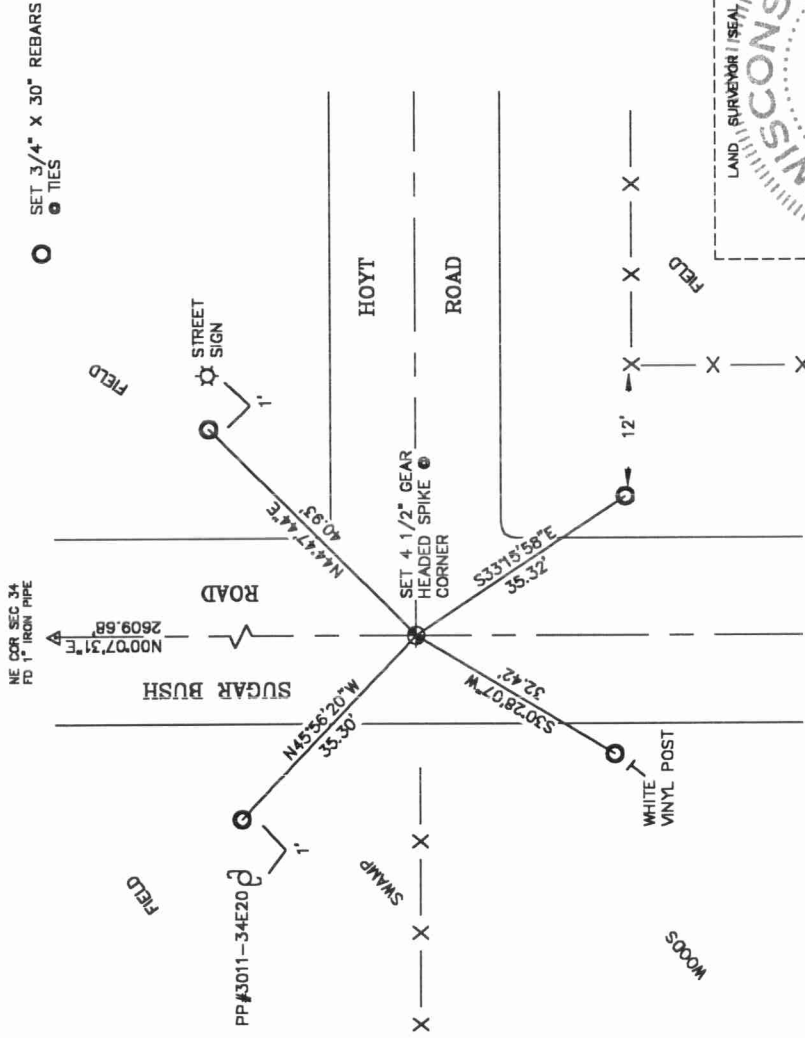
● = LOCATION OF CORNER

SECTION 34
 TOWNSHIP 30 NORTH, RANGE 11 EAST
 TOWN OF ROLLING
 LANGLADE COUNTY, WISCONSIN

CORNER WAS: (CHECK ALL THAT APPLY)

- RESTORED THROUGH ACCEPTANCE OF AN OBLITERATED EVIDENCE LOCATION
- RESTORED THROUGH ACCEPTANCE OF A FOUND PERPETUATED LOCATION
- CONSIDERED A LOST CORNER AND REESTABLISHED THROUGH LOST CORNER PROPORTIONATE METHODS (INCLUDE A PLAN VIEW DRAWING SHOWING DISTANCES AND DIRECTIONS TO OTHER PUBLIC LAND SURVEY CORNERS USED FOR PROPORTIONING AND DETERMINING THE CORNER LOCATION)
- RESTORED OR REESTABLISHED IN A LOCATION THAT DIFFERS FROM A PREVIOUS RESTORATION OR REESTABLISHMENT (INCLUDE A PLAN VIEW DRAWING AND INDICATE WHAT WAS SET AND/OR FOUND)
- CHECK IF THERE IS ADDITIONAL INFORMATION ON BACK

DESCRIBE THE MONUMENT AND ACCESSORIES USED TO PERPETUATE THE LOCATION OF THE CORNER. (INCLUDE A PLAN VIEW DRAWING AND INDICATE WHAT WAS SET AND/OR FOUND) ALSO INCLUDE FOUR TIES TO THE SECTION CORNER AND DESCRIPTION OF THE TIES.



NE COR SEC 34
 FD 1" IRON PIPE

○ SET 3/4" X 30" REBARS
 ● TIES

43011342000

DANIEL E. HIGGINBOTHAM

(Type or print name) CERTIFY THAT THE CORNER LOCATION SHOWN ON THIS RECORD WAS DETERMINED BY ME OR UNDER MY DIRECTION AND CONTROL AND THAT THIS U.S. PUBLIC LAND SURVEY MONUMENT RECORD IS CORRECT AND COMPLETE TO THE BEST OF MY KNOWLEDGE AND BELIEF.

Daniel E. Higginbotham
 SIGNATURE

2/28/00
 DATE



INDEX NO. X 17