

43011332000

U.S. PUBLIC LAND SURVEY MONUMENT RECORD

(Prepared and as required by S. A-E 7.08 WI Administrative Code)

The East 1/4 corner of Section 33, T. 30 N., R. 11 E., Langlade County, WI

Corner was (check all that apply)

- Restored through acceptance of an obliterated evidence location.
- Restored through acceptance of a found perpetuated location.
- Determined to be lost and re-established through proportionate methods. (show bearings and distances to PLSS corners used for proportioning.)
- Restored/recovered/re-established in a location that differs from a previously established position. (Show difference in plan view below.)
- Check here if additional information is shown on the reverse side of this form.

Describe record evidence, recovered physical evidence, occupational evidence, testimonial evidence, and all other evidence considered in the recovery/restoration of the corner.

Oct. 1853 - W.T. Brady set quarter section post. BTs: Maple, 8 inch, S46E, 16 links, Maple, 10 inch, N49W, 35 links.

1908 - Brooks found original bt standing and marked an elm as a new bt
Brooks reported distances of 40.17 ch to section corner to the north, and 40.35 ch to the Section corner south.

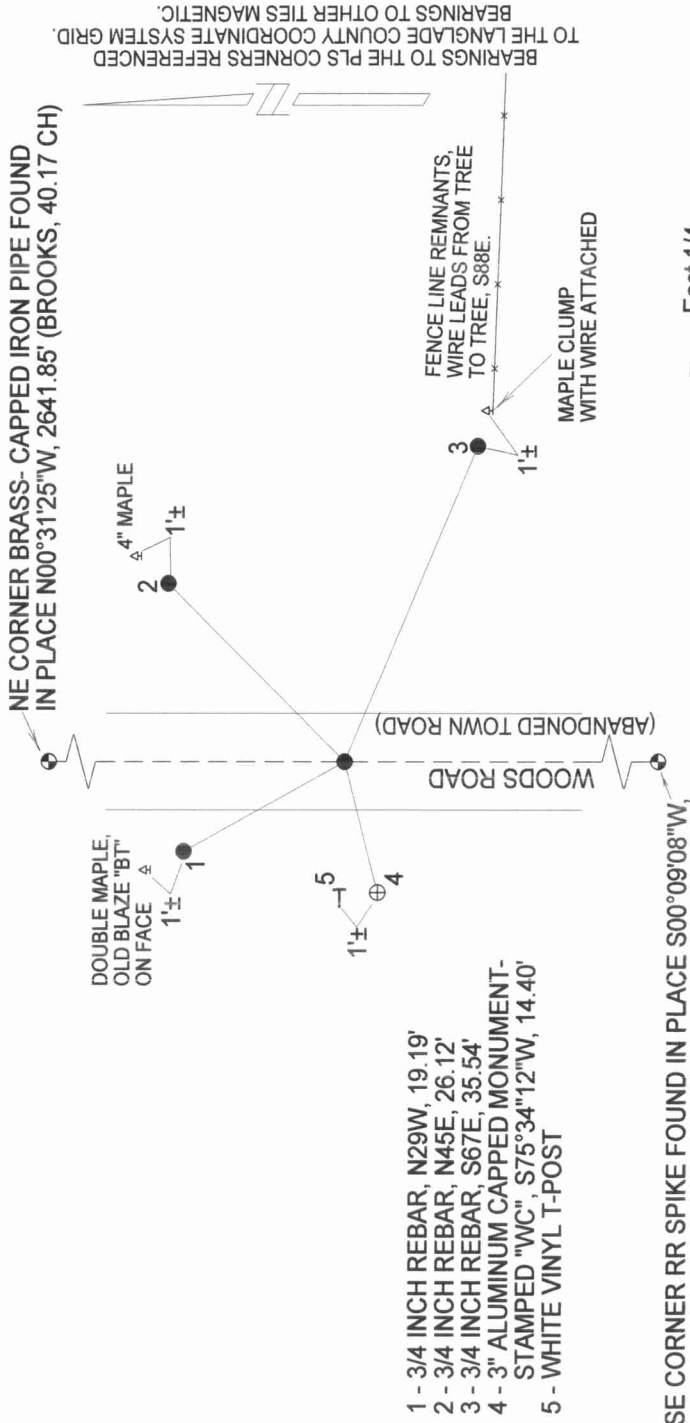
Dec. 1982 - William Kelly reset the corner by establishing mid-point between the NE and SE corners of section 33, T30N, R11E.
This placed the corner west of the remnants of an abandoned town road. Kelly set a 3" Aluminum Capped Monument as the new corner. BTs: Maple, 10", N40W, 10,35', Maple, 10", N08E, 20,70', Maple, 10", S16W, 10,50'.

2006 - I re-established this corner in proportion to Brooks' 1908 measurements to section corners N and S, and centerline of the roadbed of the abandoned town road. I believe this to be the best perpetuation of the original corner at location.

Physical description of the monument set:

I set a 3/4 inch rebar as the corner, with ties as shown below. Kelly monument was left in place and stamped "WC".

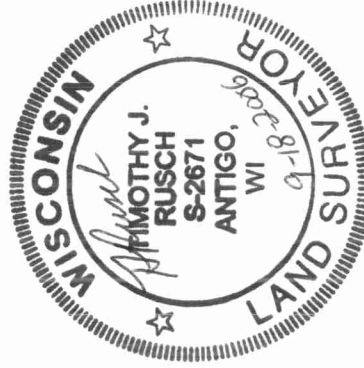
Describe the accessories used to perpetuate the location of the corner. Include a plan view drawing and indicate accessories found/set. Describe measuring point on bearing trees. Show any topographic features that would aid in future recovery of the corner.



SE CORNER RR SPIKE FOUND IN PLACE S00°09'08"W,
2653.69' (BROOKS, 40.35 CH)

The East 1/4
Corner of Section 33
T. 30 N., R. 11 E.
Langlade County, WI

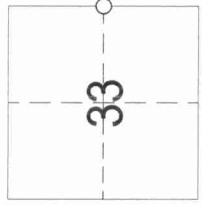
SURVEYORS SEAL



I, Timothy J. Rusch certify that the corner location shown on this record was determined by me or under my direction and control and that this U.S. Public Land Survey Monument Record is correct and complete to the best of my knowledge and belief.

Timothy J. Rusch 9-18-2006
Signature Date

INDEX No. X13-3011



○ = Location of corner