

CERTIFIED LAND CORNER RESTORATION

Index No. X-13

State of Wisconsin }
County of LANGLADE } ss.

I WILLIAM F. KELLY, do hereby certify that on the 17th day of DECEMBER, 1982, I found evidence of the EAST 1/4 corner of SECTION 33 Township 30, North, Range 11 EAST, Fourth Principal Meridian, as described hereon; and that from this evidence I established a new monument and accessories as described hereon to perpetuate the original location of this corner.

Resident witnesses:

.....
.....
.....

History of original corner establishment:

ORIGINAL CORNER ESTABLISHED BY
WILLIAM T. BRADLEY IN OCT., 1853.

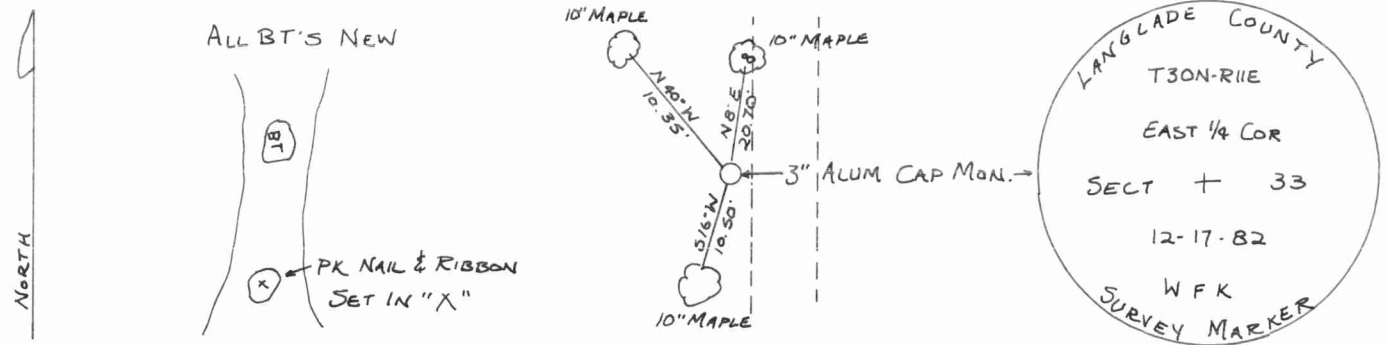
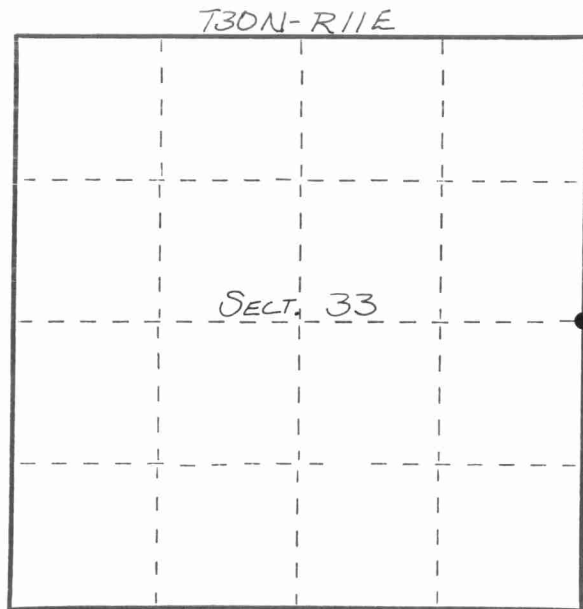
Description of corner evidence found:

CORNER EST. AT MID POINT
BETWEEN THE NE & SE
CORNERS OF SECTION 33
T 30 N R 11 E



William F. Kelly
12-20-82

Description of monument and accessories I established to perpetuate the original location of this corner.



Dated at ELCHO, Wis., this 17th day of DECEMBER, 1982.

Signature William F. Kelly Title COUNTY SURVEYOR Registration No. 1098
(County Surveyor, Registered Land Surveyor, or other duly authorized official)

Office of Register of Deeds, County of....., I hereby certify that the within instrument was filed in this office for record on the.....day of....., 19..... at.....o'clock..... M.

.....
(Register of Deeds)

By.....Deputy

○ = Corner monument restored.

FORM 985 H. C. MILLER CO., MILWAUKEE

43011332000