

CERTIFIED LAND CORNER RESTORATION

Index No. 2-11

4 30.11 33 00 20

State of Wisconsin }
County of LANGLADE } ss.

I WILLIAM F. KELLY, do hereby certify that on the 20th day of DECEMBER, 1982, I found evidence of the SOUTH 1/4 corner of SECTION 33 Township 30, North, Range 11 EAST, Fourth Principal Meridian, as described hereon; and that from this evidence I established a new monument and accessories as described hereon to perpetuate the original location of this corner.

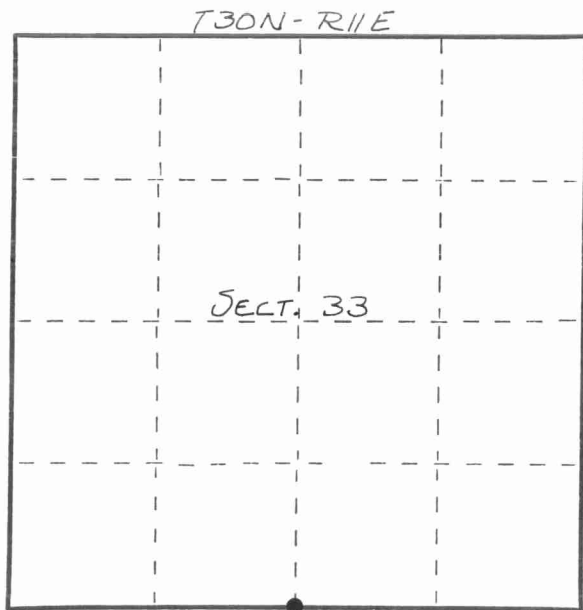
Resident witnesses:

.....

.....

.....

FORM 985 H. C. MILLER CO., MILWAUKEE



○ = Corner monument restored.

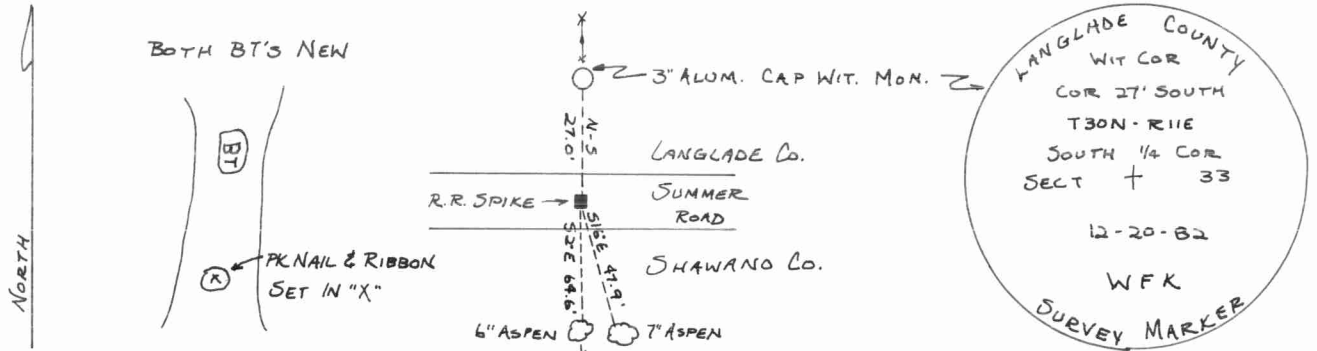
History of original corner establishment:

ORIGINAL CORNER ESTABLISHED BY
WILLIAM T. BRADLEY IN OCT., 1853.

Description of corner evidence found:

CORNER ESTABLISHED AT INTERSECTION
OF EXISTING FENCE LINES & STRAIGHT
LINE BETWEEN SE & SW SECT. CORNERS.
SET R.R. SPIKE IN PAVEMENT AS CORNER.
SET A 3" x 42" ALUMINUM CAP WITNESS
MONUMENT. MARKED 2 BT'S.

Description of monument and accessories I established to perpetuate the original location of this corner.



Dated at ELCHO, Wis., this 20th day of DECEMBER, 1982.

Signature William F. Kelly Title COUNTY SURVEYOR Registration No. 1098
(County Surveyor, Registered Land Surveyor, or other duly authorized official)

Office of Register of Deeds, County of _____, I hereby certify that the within instrument was filed in this office for record on the _____ day of _____, 19____ at _____ o'clock _____ M.

.....
(Register of Deeds)

By _____ Deputy



William F. Kelly
12-20-82

