

CERTIFIED LAND CORNER RESTORATION

Index No. Z-13

State of Wisconsin }
County of LANGLADE } ss.

I WILLIAM F. KELLY, do hereby certify that on the 20th day of DECEMBER, 1982, I found evidence of the SE corner of SECTION 33 Township 30, North, Range 11 EAST, Fourth Principal Meridian, as described hereon; and that from this evidence I established a new monument and accessories as described hereon to perpetuate the original location of this corner.

Resident witnesses:

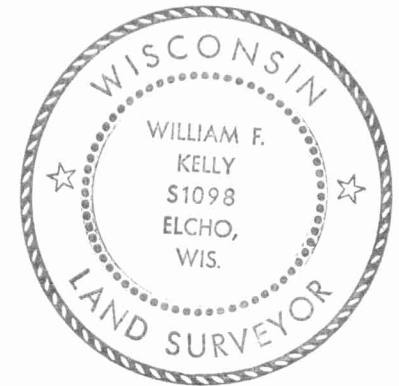
EUGENE F. NOW

History of original corner establishment:

ORIGINAL CORNER ESTABLISHED BY
WILLIAM T. BRADLEY IN OCT., 1853.

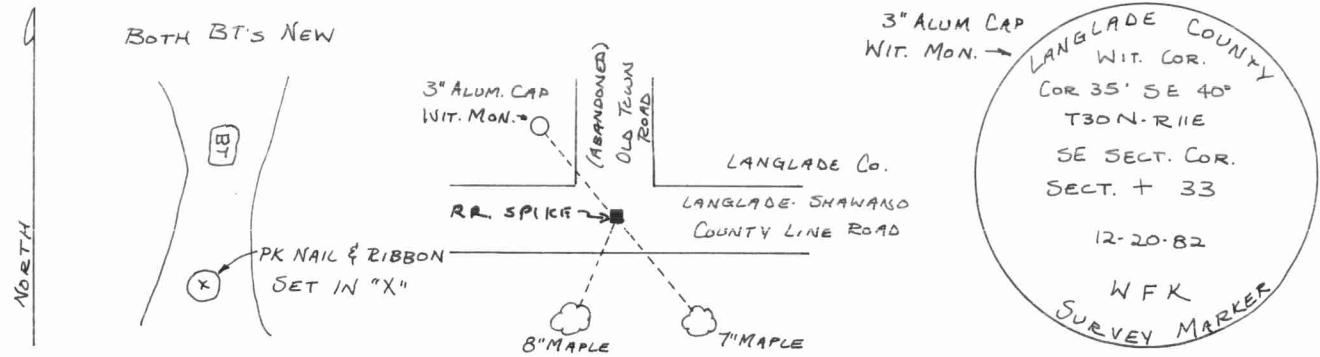
Description of corner evidence found:

ORIGINAL CORNER LOST. LOCATION OF
CORNER ESTABLISHED FROM INFO.
SUPPLIED BY RES. WITNESS AND
OCCUPIED BOUNDARIES.



William F. Kelly
12-21-82

Description of monument and accessories I established to perpetuate the original location of this corner.



Dated at ELCHO, Wis., this 20th day of DECEMBER, 1982

Signature William F. Kelly Title COUNTY SURVEYOR Registration No. 1098
(County Surveyor, Registered Land Surveyor, or other duly authorized official)

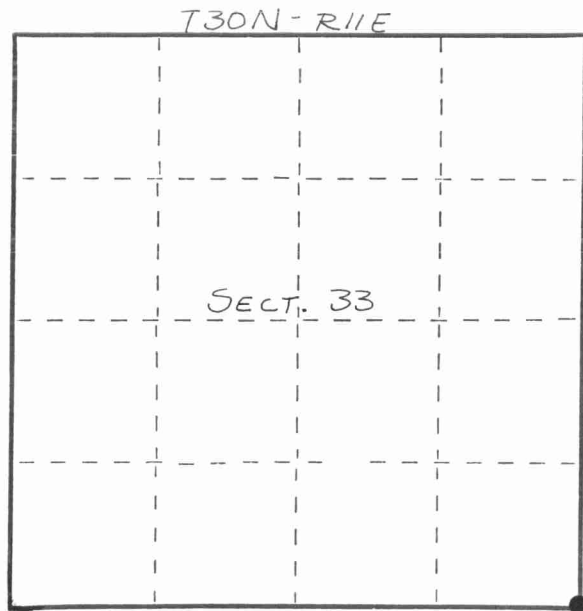
Office of Register of Deeds, County of _____, I hereby certify that the within instrument was filed in this office for record on the _____ day of _____, 19____ at _____ o'clock _____ M.

(Register of Deeds)

By _____ Deputy

43011330000

FORM 985 H. C. MILLER CO., MILWAUKEE



○ = Corner monument restored.