

430113Z 2000 2013

U.S. PUBLIC LAND SURVEY MONUMENT RECORD

(Prepared and as required by S. A-E 7.08 WI Administrative Code)

The WEST 1/4 corner of Section 33, T. 30 N., R. 11 E., Langlade County, WI
Corner was (check all that apply)

- Restored through acceptance of an obliterated evidence location.
- Restored through acceptance of a found perpetuated location.
- Determined to be lost and re-established through proportionate methods. (show bearings and distances to PLSS corners used for proportioning.)
- Restored/recovered/re-established in a location that differs from a previously established position. (Show difference in plan view below.)
- Check here if additional information is shown on the reverse side of this form.

Describe record evidence, recovered physical evidence, occupational evidence, testimonial evidence, and all other evidence considered in the recovery/restoration of the corner.

1853 - Government Surveyor Brady set quarter section post. BTs: Cedar, 10 inch, N52W, 14 links, Cedar, 12 inch, S32E, 15 links.

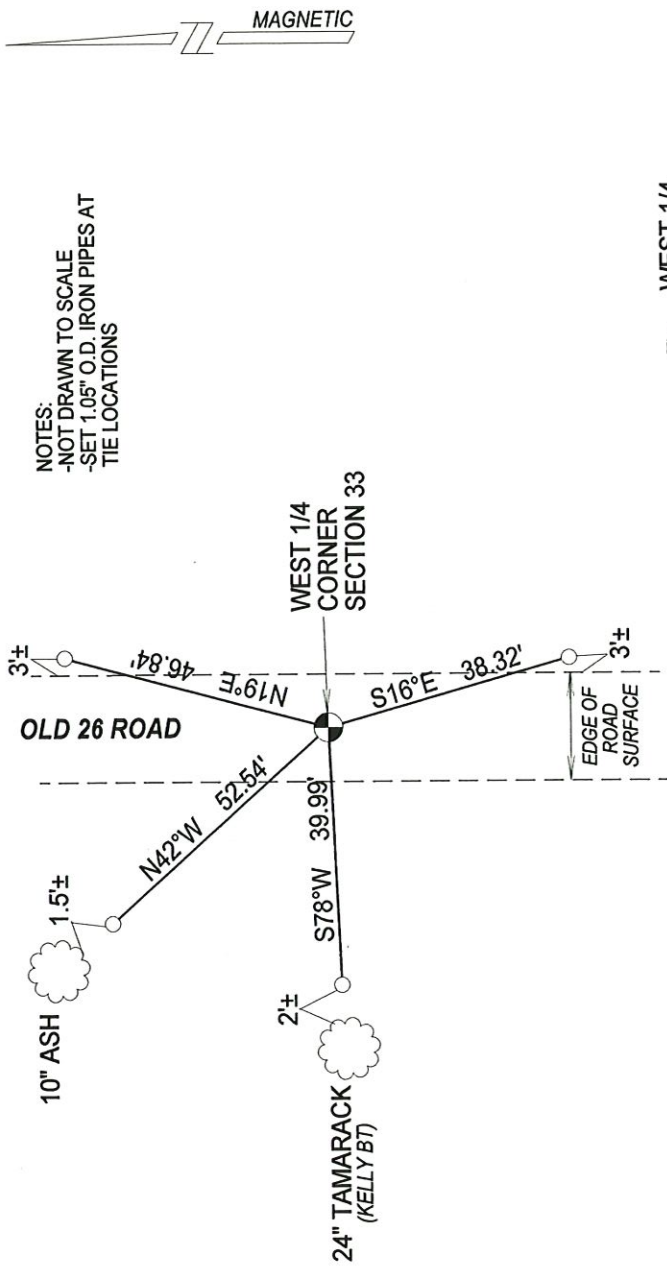
1982 - Former Surveyor Kelly established corner at midpoint between the Northwest corner and Southwest corner of section 33. He set a railroad spike at the corner location, made three ties, and prepared a tie sheet.

2013 - I found no evidence of the railroad spike set by Kelly. I found one of his bearing trees. I reset the corner at coordinates I previously obtained on the railroad spike in 2006 while working in Section 33.

Physical description of the monument set:

I set a 1.05" o.d. x 24" long iron pipe as the corner, with ties as shown below. The corner lies 0.30' below the road surface and approximately 1.5' East of the centerline of Old 26 road.

Describe the accessories used to perpetuate the location of the corner. Include a plan view drawing and indicate accessories found/set. Describe measuring point on bearing trees. Show any topographic features that would aid in future recovery of the corner.



The WEST 1/4
Corner of Section 33
T. 30 N., R. 11 E.
Langlade County, WI

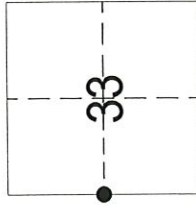
SURVEYORS SEAL



I, Timothy J. Rusch, certify that the corner location shown on this record was determined by me or under my direction and control and that this U.S. Public Land Survey Monument Record is correct and complete to the best of my knowledge and belief.

Timothy J. Rusch Signature
08/08/2013 Date

INDEX No. X9 - 3011



● = Location of corner

CERTIFIED LAND CORNER RESTORATION

Index No. X-9

State of Wisconsin } ss.
County of LANGLEADE

I WILLIAM F. KELLY, do hereby certify that on the 17th day of DECEMBER, 1982, I found evidence of the WEST 1/4 corner of SECTION 33 Township 30, North, Range 11 EAST, Fourth Principal Meridian, as described hereon; and that from this evidence I established a new monument and accessories as described hereon to perpetuate the original location of this corner.

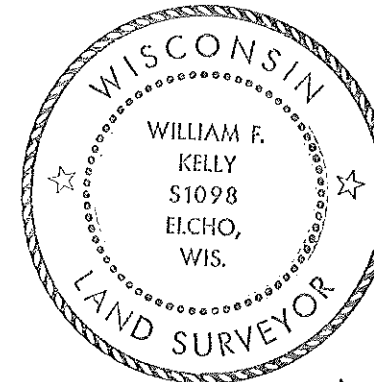
Resident witnesses:

History of original corner establishment:

ORIGINAL CORNER ESTABLISHED BY WILLIAM T. BRADLEY IN OCT., 1853

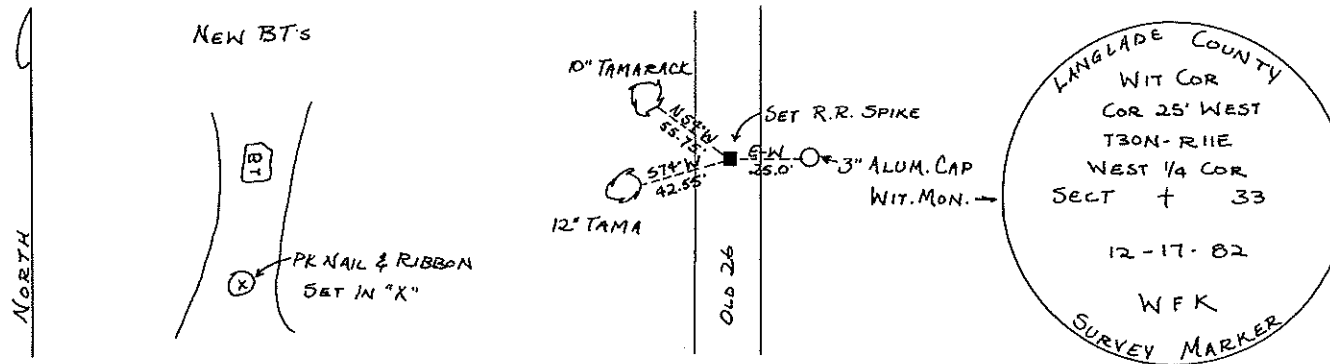
Description of corner evidence found:

CORNER ESTABLISHED AT MIDPOINT BETWEEN NN & SW SECT. CORNERS.



William F. Kelly
12-20-82

Description of monument and accessories I established to perpetuate the original location of this corner.



Dated at ELCHO, Wis., this 17th day of DECEMBER, 1982.

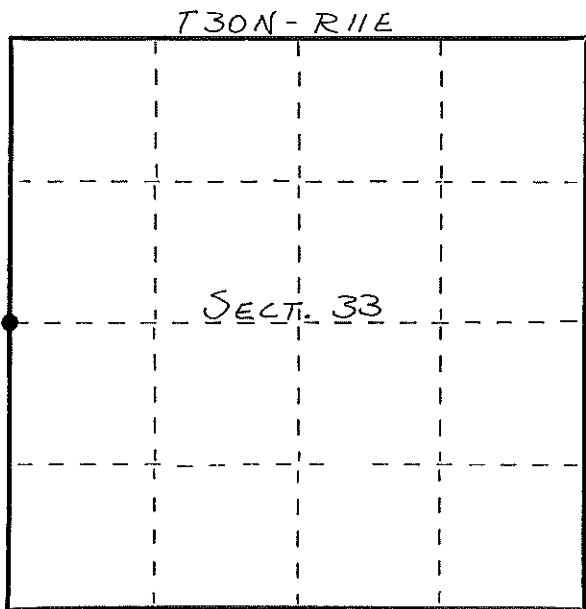
Signature: William F. Kelly Title: COUNTY SURVEYOR Registration No. 1098
(County Surveyor, Registered Land Surveyor, or other duly authorized official)

Office of Register of Deeds, County of _____, I hereby certify that the within instrument was filed in this office for record on the _____ day of _____, 19____ at _____ o'clock _____ M.

(Register of Deeds)

By _____ Deputy

FORM 985 H. C. MILLER CO., MILWAUKEE
430132000



○ = Corner monument restored.