

CERTIFIED LAND CORNER RESTORATION

Index No. X-9

State of Wisconsin } ss.
County of LANGLEADE

I WILLIAM F. KELLY, do hereby certify that on the 17th day of DECEMBER, 1982, I found evidence of the WEST 1/4 corner of SECTION 33 Township 30 North, Range 11 EAST, Fourth Principal Meridian, as described hereon; and that from this evidence I established a new monument and accessories as described hereon to perpetuate the original location of this corner.

Resident witnesses:

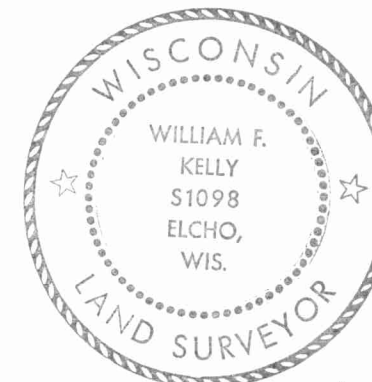
.....
.....
.....

History of original corner establishment:

ORIGINAL CORNER ESTABLISHED
BY WILLIAM T. BRADLEY IN OCT., 1853

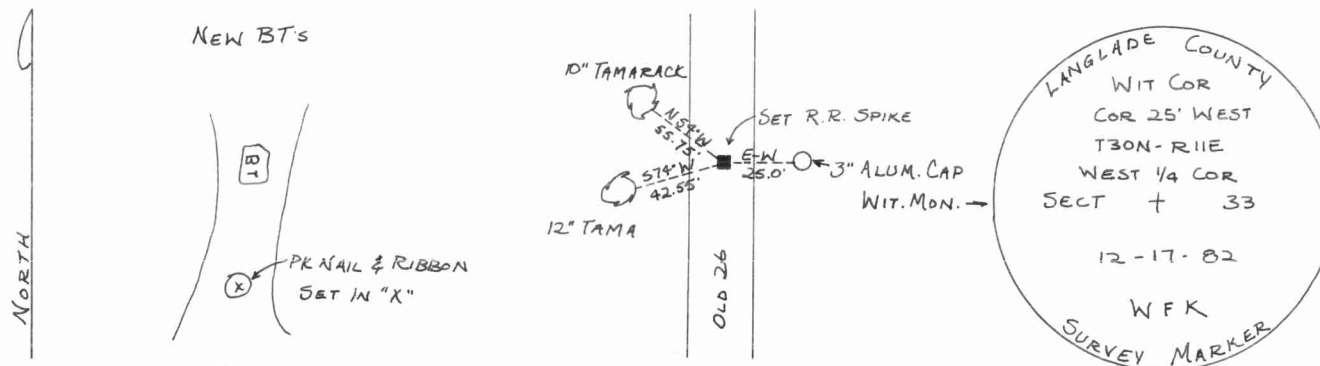
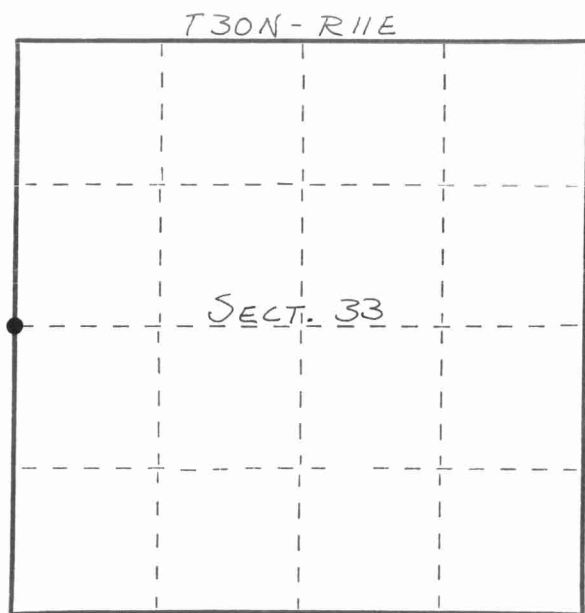
Description of corner evidence found:

CORNER ESTABLISHED AT MIDPOINT
BETWEEN NW & SW SECT. CORNERS.



William F. Kelly
12-20-82

Description of monument and accessories I established to perpetuate the original location of this corner.



Dated at ELCHO, Wis., this 17th day of DECEMBER, 1982

Signature: William F. Kelly Title: COUNTY SURVEYOR Registration No. 1098
(County Surveyor, Registered Land Surveyor, or other duly authorized official)

Office of Register of Deeds, County of _____, I hereby certify that the within instrument was filed in this office for record on the _____ day of _____, 19____ at _____ o'clock _____ M.

(Register of Deeds)

By _____ Deputy

○ = Corner monument restored.

FORM 985 H. C. MILLER CO., MILWAUKEE
4301132000